

C&K JA Series Rocker Switches

Features/Benefits

- Right angle PCB mounting
- Cost-effective solution

Typical Applications

- Modems
- Entertainment devices
- Computer printers



Specifications

CONTACT RATING: Q contact material: 2 AMPS @ 125 V AC; 1 AMP @ 250 V AC (UL/CSA). See page G-81 for additional ratings.

ELECTRICAL LIFE: 10,000 make-and-break cycles at full load.

CONTACT RESISTANCE: Below 20 m Ω typ. initial @ 2-4 V DC, 100 mA, for both silver and gold plated contacts.

INSULATION RESISTANCE: 10⁹ Ω min.

DIELECTRIC STRENGTH: 1,000 Vrms min. @ sea level.

OPERATING TEMPERATURE: -30°C to 85°C

Materials

HOUSING & ACTUATOR SUPPORT: 6/6 nylon (UL 94V-2), black.

ACTUATOR: 6/6 nylon (UL 94V-2), black.

PLUNGER: Glass filled polyester (UL 94V-0).

CONTACTS & TERMINALS: Q contact material: Copper, silver plated. See page G-81 for additional contact materials.

SWITCH SUPPORT TERMINALS: Brass, tin plated (not electrically connected).

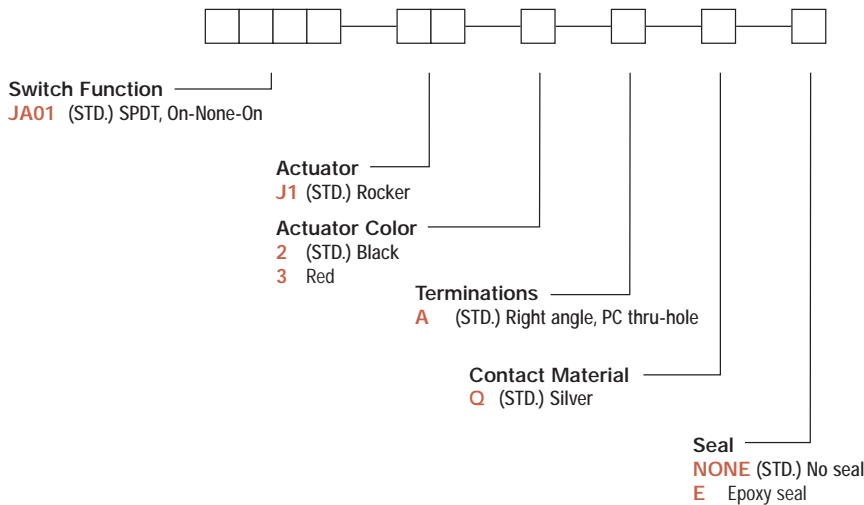
CONTACT SPRING: Music wire or stainless steel.

TERMINAL SEAL: Epoxy.

NOTE: Specifications and materials listed above are for standard switches. For information on specific and custom switches, consult Customer Service Center.

Build-A-Switch

To order, simply select desired option from each category and place in the appropriate box. Available options are shown and described on pages G-80 and G-81. For additional options not shown in catalog, consult Customer Service Center.

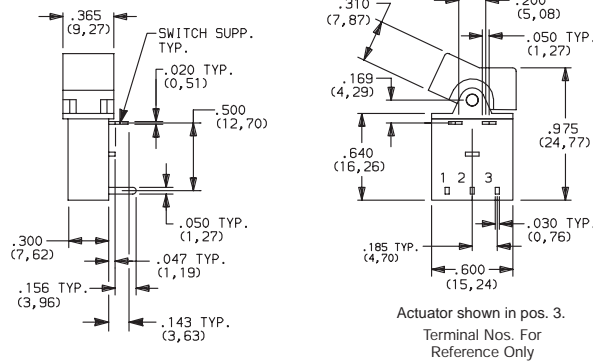


SWITCH FUNCTION



NO. POLES	MODEL NO.	SWITCH FUNCTION			CONNECTED TERMINALS			SCHEMATIC
		POS. 1	POS. 2	POS. 3	POS. 1	POS. 2	POS. 3	
SP	JA01 (STD.)	ON	NONE	ON	2-3	N/A	2-1	

SPDT



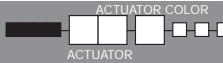
Part number shown: JA01J12AQ

Actuator shown in pos. 3.
Terminal Nos. For Reference Only

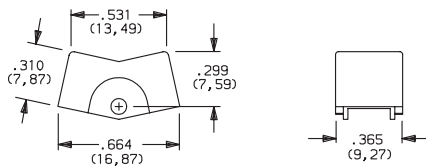
MOM. = MOMENTARY

Contact makes on opposite side actuator thrown.

ACTUATOR



J1 (STD.) ROCKER



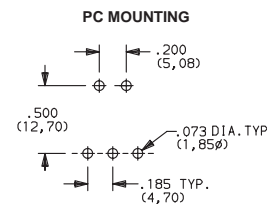
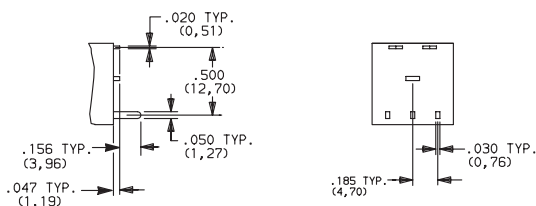
OPTION CODE	ACTUATOR COLOR
2	(STD.) BLACK
3	WHITE

NOTE: Other colors available, consult Customer Service Center.

TERMINATIONS



A (STD.) RIGHT ANGLE, PC THRU-HOLE



C&K JA Series Rocker Switches



CONTACT MATERIAL



OPTION CODE	CONTACT AND TERMINAL MATERIAL	RATINGS	
Q (STD.)	SILVER ¹	POWER	2 AMPS @ 125 V AC; 1 AMP @ 250 V AC (UL/CSA).

CONTACT MATERIAL/APPLICATION RECOMMENDATIONS – SEE SECTION N.

¹ CONTACTS & TERMINALS: Copper, silver plated.

All models   with all options when ordered with 'Q' contact material.

SEAL



NONE (STD.) NO SEAL

E EPOXY SEAL



Rocker



G