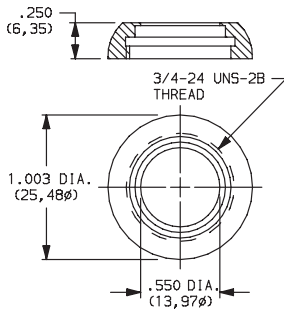


Hardware

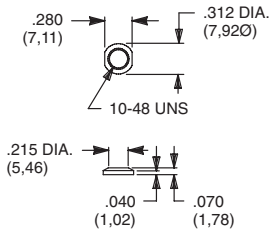
DRESS NUTS

Switchlocks: Y, H & A Series



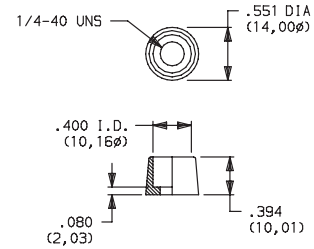
PART NO.
531300201 NICKEL PLATED
175052745 ALUMINIUM BLACK ANODIZE

Toggles: T Series
 Pushbuttons: TP Series



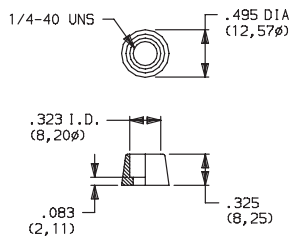
PART NO.
298D01201 NICKEL PLATED
298D01A56 BLACK

Pushbuttons: 8020, 8060, 8500 & TP Series



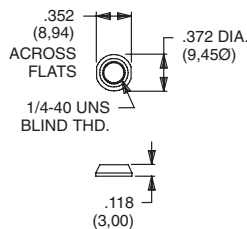
PART NO.
580700201 NICKEL PLATED

Pushbuttons: 8020, 8060, E010 & TP Series



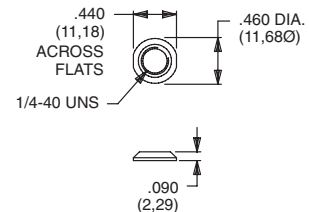
PART NO.
702501201 NICKEL PLATED
702501A56 BLACK

Toggles: 7000, 9000, E & T Series
 Pushbuttons: 8020, 8060, 8500, E010 & TP Series



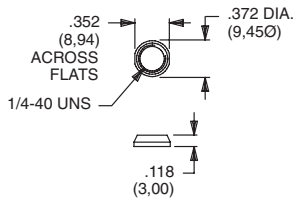
PART NO.
709901201 NICKEL PLATED
709901215 SATIN CHROME
709901A56 BLACK

Toggles: 7000, 9000, E & T Series
 Pushbuttons: 8020, 8060, 8500, E010 & TP Series



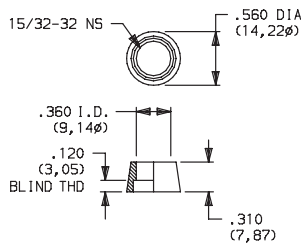
PART NO.
776001201 NICKEL PLATED
776002231 BLACK

Toggles: 7000, 9000, E & T Series
 Pushbuttons: 8020, 8060, 8500, E010 & TP Series



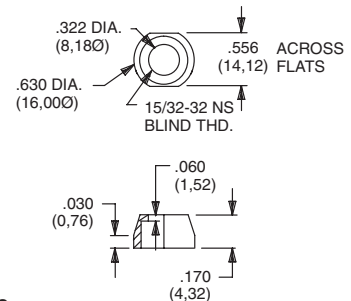
PART NO.
299D01201 NICKEL PLATED
299D01215 SATIN CHROME
299D01A56 BLACK

Pushbuttons: 8500 Series



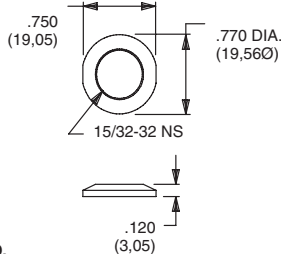
PART NO.
498800201 NICKEL PLATED

Toggles: 7000 Series, T2P Actuator



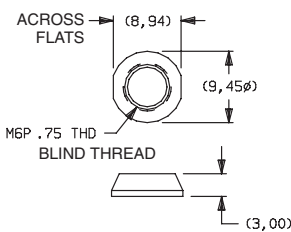
PART NO.
605300201 NICKEL PLATED

Toggles: 7000 & 9000 Series
 Pushbuttons: 8500 Series



PART NO.
895101201 NICKEL PLATED
895101A56 BLACK

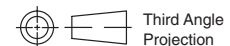
Toggles: 7000 Series
 Pushbuttons: 8020 & 8060 Series



PART NO.
709903201 NICKEL PLATED
709903A56 BLACK

MATERIAL

Brass, nickel plated standard. Other finishes available, consult Customer Service center.



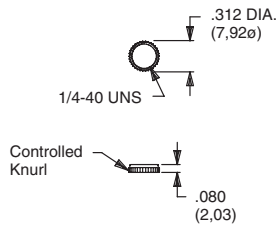
Third Angle Projection

Dimensions are shown: Inch (mm)
 Specifications and dimensions subject to change



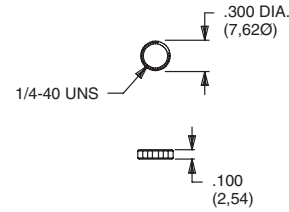
KNURLED NUTS

Toggles: 7000, 9000 & T Series
Pushbuttons: 8020, 8060, 8500 & TP Series



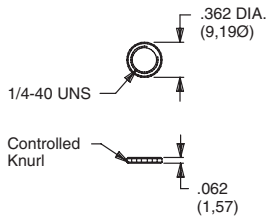
PART NO.
778000201 NICKEL PLATED
778000A56 BLACK

Toggles: 7000, 9000, E & T Series
Pushbuttons: 8020, 8060, 8500, E010 & TP Series



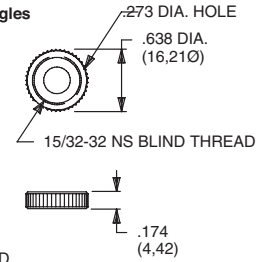
PART NO.
778600201 NICKEL PLATED
778600A56 BLACK

Toggles: 7000, 9000 & T Series
Pushbuttons: 8020, 8060, 8500 & TP Series
Fits Gulmite #12 Socket & Wrench 8942-02-201



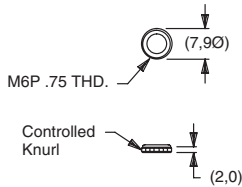
PART NO.
796901201 NICKEL PLATED
796901A56 BLACK

Toggles: 7000 & 9000 Series
Pushbuttons: 8500 Series
Will not fit T, T1, TP & T1P Toggles



PART NO.
471300201 NICKEL PLATED
471300A56 BLACK

Toggles: 7000 Series
Pushbuttons: 8020 & 8060 Series



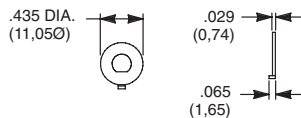
PART NO.
483200201 NICKEL PLATED

MATERIAL

Brass, nickel plated standard. Other finishes available, consult Customer Service center.

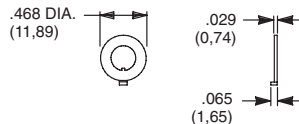
LOCKING RINGS

Toggles: T Series
Pushbuttons: TP Series
Fits 10-48 Bushing



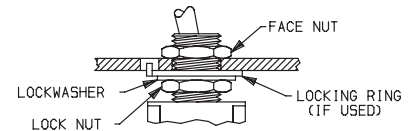
PART NO.
465000201 NICKEL PLATED WITH FLAT

Toggles: 7000, 9000 & T Series
Pushbuttons: 8020, 8060, 8500 & TP Series
Rotary: M Series
Fits 1/4-40 Bushing



PART NO.
700701201 NICKEL PLATED WITH KEYWAY
700701A56 BLACK WITH KEYWAY

PANEL MOUNT ASSEMBLY



TYPICAL ASSEMBLY WITH LOCKING RING

NOTE: We recommend that locknut always be used with non-flanged bushings.

CAUTION: To avoid damaging panel front, always tighten locknut at back of panel. Overtightening mounting nut may cause K2-K12 actuators to bind.

MATERIAL

Brass, nickel plated standard. Other finishes available, consult Customer Service Center.



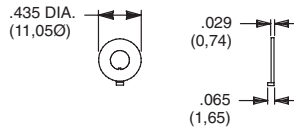
Third Angle Projection



Hardware

LOCKING RINGS

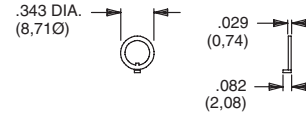
Toggles: T Series
Pushbuttons: TP Series
Fits 10-48 Bushing



PART NO.

465101201 NICKEL PLATED WITH KEYWAY

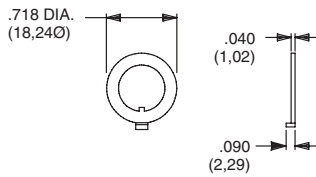
Toggles: 7000, 9000 & T Series
Pushbuttons: 8020, 8060, 8500 & TP Series
Rotary: M Series
Fits 1/4-40 Bushing



PART NO.

753700201 NICKEL PLATED WITH KEYWAY
753700A56 BLACK WITH KEYWAY

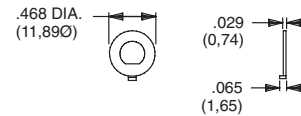
Toggles: 7000 & 9000 Series
Pushbuttons: 8500 Series
Fits 15/32 Bushing



PART NO.

707200201 NICKEL PLATED WITH KEYWAY
707200A56 BLACK WITH KEYWAY

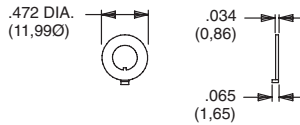
Toggles: 7000, 9000 & T Series
Pushbuttons: 8020, 8060, 8500 & TP Series
Rotary: M Series
Fits 1/4-40 Bushing



PART NO.

757200201 NICKEL PLATED WITH FLAT
757200A56 BLACK WITH FLAT

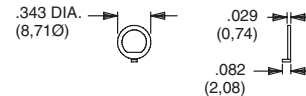
Toggles: 7000 Series
Pushbuttons: 8020 & 8060 Series
Fits M6P2 Metric Bushing



PART NO.

791800201 NICKEL PLATED WITH KEYWAY
791800A56 BLACK WITH KEYWAY

Toggles: 7000, 9000 & T Series
Pushbuttons: 8020, 8060, 8500 & TP Series
Rotary: M Series
Fits 1/4-40 Bushing



PART NO.

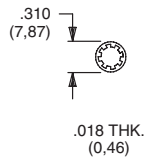
757300201 NICKEL PLATED WITH FLAT
757300A56 BLACK WITH FLAT

MATERIAL

Brass, nickel plated standard. Other finishes available, consult Customer Service Center.

LOCKWASHERS

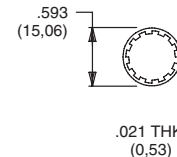
Toggles: T Series
Pushbuttons: TP Series
Fits 10-48 Bushing



PART NO.

465200202 NICKEL PLATED

Toggles: 7000 & 9000 Series
Pushbuttons: 8500 Series
Fits 15/32 Bushing



PART NO.

700302202 NICKEL PLATED
700302A56 BLACK

MATERIAL

Steel, nickel plated standard. Other finishes available, consult Customer Service Center.



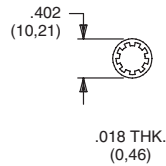
Third Angle
Projection

Dimensions are shown: Inch (mm)
Specifications and dimensions subject to change



LOCKWASHERS

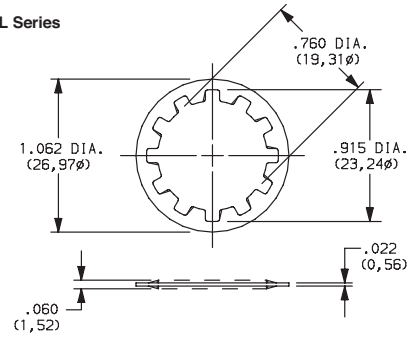
Toggles: 7000, 9000, E & T Series
Pushbuttons: 8020, 8060, 8500, E010 & TP Series
Fits 1/4-40 Bushing



PART NO.

700303202 NICKEL PLATED
700303A56 BLACK

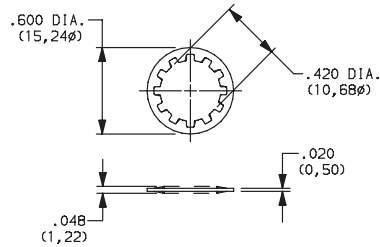
Switchlocks: A, BY, H, W, Y & YL Series
Fits 3/4 Dia. Bushing



PART NO.

175050200 ZINC PLATED

Rotary: A & RTA Series
Fits 3/8 Dia. Thread
M10 X .75 metric

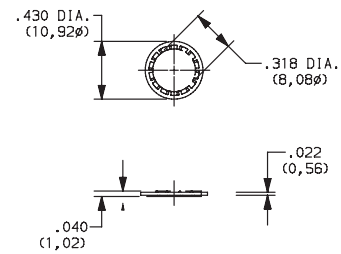


PART NO.

472800202

NICKEL PLATED

Pushbutton: 8700 Series
Rotary: F Series
Fits 5/16 Dia. Thread



PART NO.

135A00000

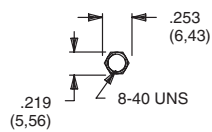
ZIINC PLATED

MATERIAL

Steel, nickel plated standard. Other finishes available, consult Customer Service Center.

MOUNTING NUTS

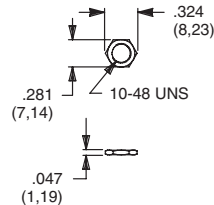
Pushbuttons: 8600 Series



PART NO.

775200201 NICKEL PLATED
775200A56 BLACK

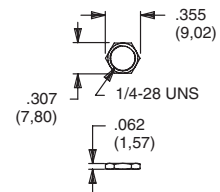
Toggles: T Series
Pushbuttons: TP Series



PART NO.

464900201 NICKEL PLATED
464900A56 BLACK

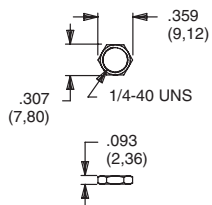
Rotary: M Series



PART NO.

477100201 NICKEL PLATED

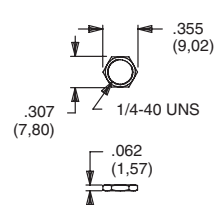
Toggles: E Series
Pushbuttons: E010 Series



PART NO.

540400201 NICKEL PLATED
540400A56 BLACK

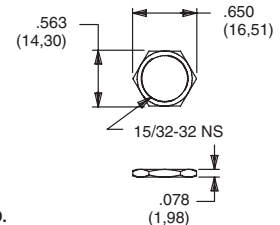
Toggles: 7000, 9000 & T Series
Pushbuttons: 8020, 8060, 8500 & TP Series



PART NO.

700201201 NICKEL PLATED
700201A56 BLACK

Toggles: 7000 & 9000 Series
Pushbuttons: 8500 Series

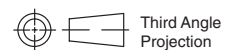


PART NO.

707100201 NICKEL PLATED
707100215 SATIN CHROME
707100A56 BLACK

MATERIAL

Brass, nickel plated standard. Other finishes available, consult Customer Service Center.



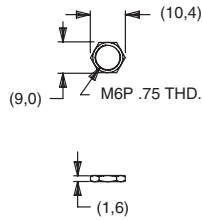
Third Angle
Projection

Additional Hardware Information

Hardware

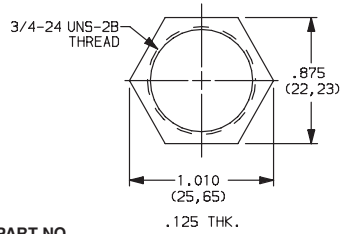
MOUNTING NUTS

Toggles: 7000 Series
Pushbuttons: 8020 & 8060 Series



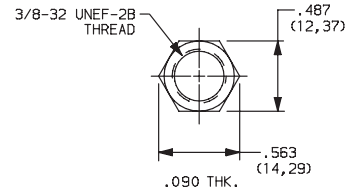
PART NO.
791600201 NICKEL PLATED
791600A56 BLACK

Switchlocks: A, BY, H, P, W, Y & YL Series



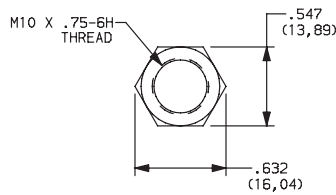
PART NO.
937C00000
ZINC PLATE

Rotary: A & RTA Series



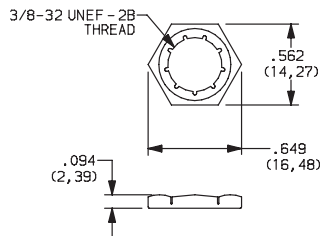
PART NO.
472706201
NICKEL PLATED

Rotary: A & RTA Series



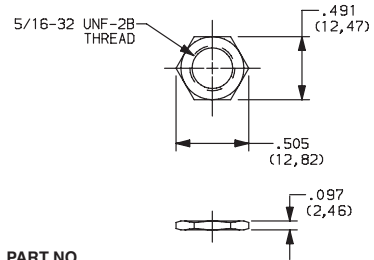
PART NO.
495100201
NICKEL PLATED

Rotary: H & R Series



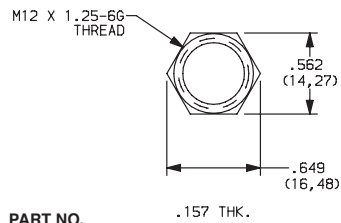
PART NO.
925C00000
ZINC, YELLOW TRIVALENT CHROMIUM

Rotary: F Series



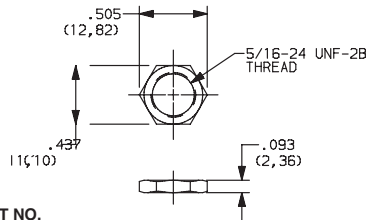
PART NO.
175020201
NICKEL PLATED

Switchlocks: YM Series



PART NO.
1790901A47
ZINC PLATED, CLEAR TRIVALENT CHROMIUM

Pushbutton: 8700 Series



PART NO.
281B00201
NICKEL PLATED

MATERIAL

Brass, nickel plated standard. Other finishes available, consult Customer Service Center.

Additional Hardware Information



N



Third Angle Projection



Dimensions are shown: Inch (mm)
Specifications and dimensions subject to change