

**ISDN MAGNETICS**  
UPO Interface Transformer

TM00207

- Minimum interwinding breakdown voltage of 1500 Vrms

**ELECTRICAL SPECIFICATIONS at 25° C**

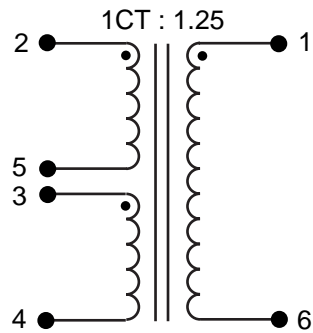
Part Number	Turns Ratio ± 2%	Primary Inductance* mH min	Leakage Inductance μH max	DCR Ω max		Interwinding Capacitance pF max
				Pri	Sec	
S559-6204-22	1CT : 2	1.75	11.5	4	10	60
S559-6204-18	1CT : 1.25	1.75	11	2.8	4.2	60
S559-6204-21	1CT : 1CT	6.50	3	1.3	1.5	60

\* Measured at 10 kHz, 0.1 Vac

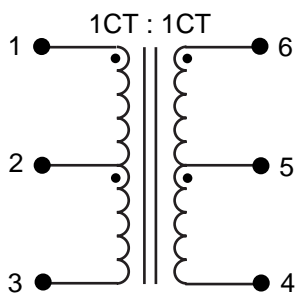
Part Number	Compatible Transceiver ICs	
	IC Mfr	IC Part Number
S559-6204-22	Siemens	PEB2096
S559-6204-18	Siemens	PEB2095

### SCHEMATICS

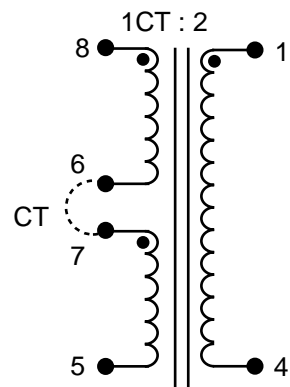
S559-6204-18



S559-6204-21



S559-6204-22



# ISDN MAGNETICS

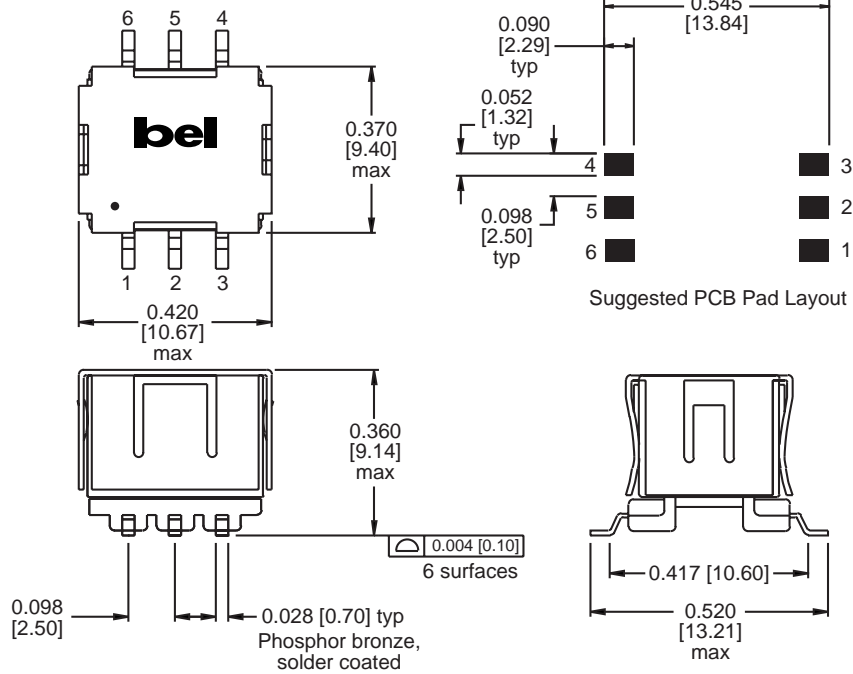
## UPO Interface Transformer



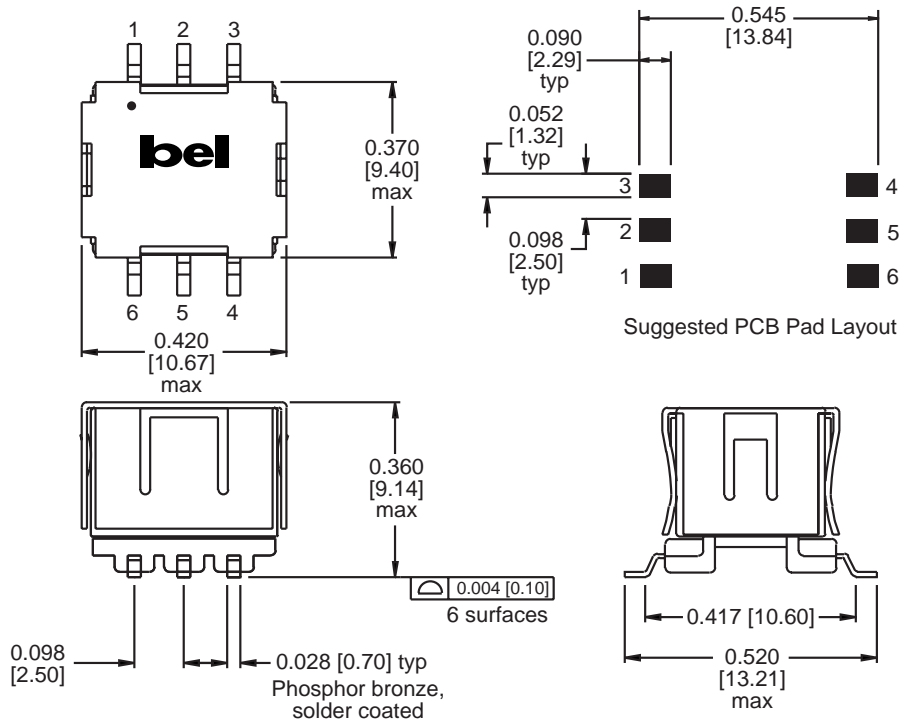
TM00207

### MECHANICAL

S559-6204-18



S559-6204-21



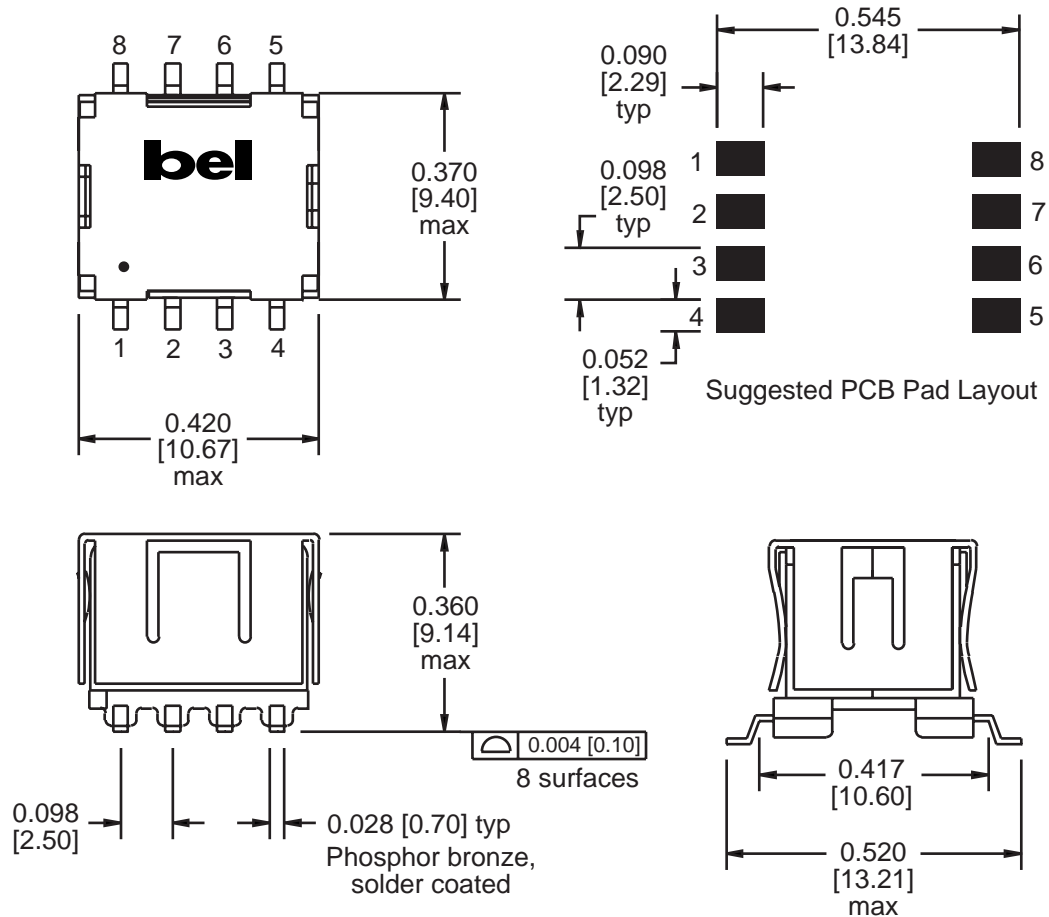
Dimensions are in inches [millimeters].  
Standard dimension tolerance is  $\pm 0.005$  [0.13] unless otherwise noted.

©2000 Bel Fuse Inc. Specifications subject to change without notice. 05.00

TM00207

#### MECHANICAL

S559-6204-22



Dimensions are in inches [millimeters].  
Standard dimension tolerance is  $\pm 0.005$  [0.13] unless otherwise noted.

©2000 Bel Fuse Inc. Specifications subject to change without notice. 05.00

#### CORPORATE

**Bel Fuse Inc.**  
198 Van Vorst Street  
Jersey City, NJ 07302  
Tel 201-432-0463  
Fax 201-432-9542  
www.belfuse.com

#### FAR EAST

**Bel Fuse Ltd.**  
8F / 8 Luk Hop Street  
San Po Kong  
Kowloon, Hong Kong  
Tel 852-2328-5515  
Fax 852-2352-3706  
www.belfuse.com

#### EUROPE

**Bel Fuse Europe Ltd.**  
Preston Technology Management Centre  
Marsh Lane, Suite G7, Preston  
Lancashire, PR1 8UD, U.K.  
Tel 44-1772-556601  
Fax 44-1772-888366  
www.belfuse.com