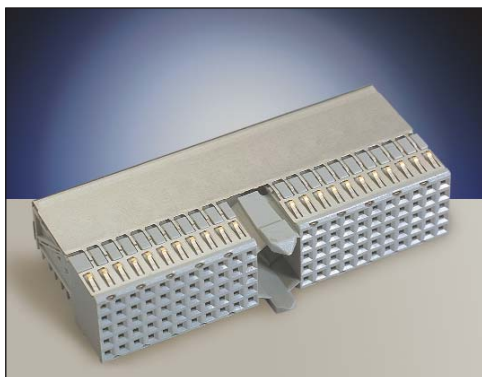
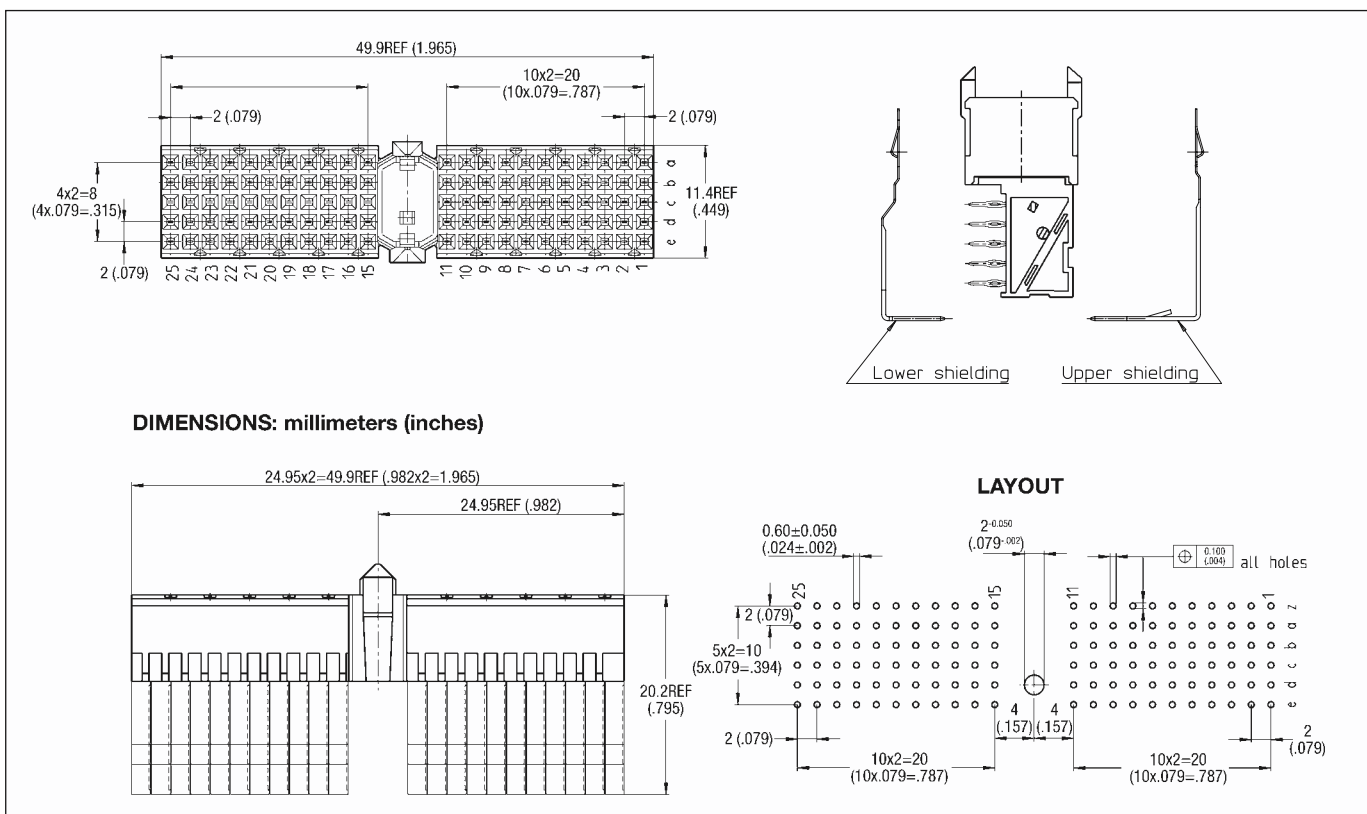


# J1/J4 Right Angle Female

## Series 7200 – Style A 25, 110 Contacts



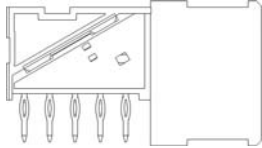
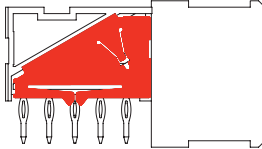
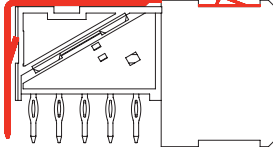
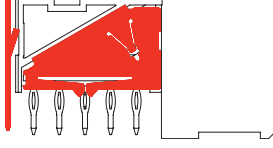

- 110 signal contacts in 5 rows of 25 positions
- Center cavity with pre-alignment guides and polarization option (uses 3 positions)
- Designed for gas tight press-fit installations
- This connector can be used by itself or in conjunction with Style B or C connectors
- Used in positions J1 and J4 of the CompactPCI® specification (Daughter Card)
- Available with or without upper ground return shield
- Lower shield available (see page 11)
- Reduced crosstalk version available (see page 11)
- See pages 52 and 53 for keying options



# Right Angle Female

## Series 7200 – Style A 25, 110 Contacts



Shielding Version	Cavity	Performance Class	Part Number
<b>J1, J4 / Without Shield</b> 	110	2	27 7200 110 000 002
<b>J1, J4 / Reduced Crosstalk</b> 	110	2	27 7200 110 001 002
<b>J1, J4 / Upper Shield</b> 	110	2	27 7200 110 002 002
<b>J1, J4 / Upper Shield and Reduced Crosstalk</b> 	110	2	27 7200 110 003 002
<b>Lower Shield</b> 	110	2	67 7200 2643 00 675

Technical description and dimensions see page 9 and 10