

RoHS Compliant

Features

- Distributed constant type LC filter. Prevents ringing caused by circuit impedance. Suitable for high speed digital circuits and video signal lines.
- Stable noise attenuation over wide frequency ranges.
- Small and low profile.

Applications

- Data Lines for Mobile Phones (LCD Lines, Video Lines, Bus Lines)
- Bus Lines for Digital Equipment

How to Order

KNA 16 300 - W 3
 ① ② ③ ④ ⑤

- ① Series
- ② Size

| | EIA | EIAJ |
|----|------|------|
| 16 | 0603 | 1608 |
| 21 | 0805 | 2012 |

- ③ Frequency

| | |
|------------|--------|
| 300(KNA16) | 300MHz |
| 400(KNA21) | 400MHz |

*Frequency at Attenuation typical 3dB, max. 6dB

- ④ Taping Direction
W: Standard

- ⑤ Quantity per Reel

| | | |
|---|----------|----------------|
| 3 | 3000pcs. | KNA21 : std. |
| 4 | 4000pcs. | KNA16 : option |
| 5 | 5000pcs. | KNA16 : std. |

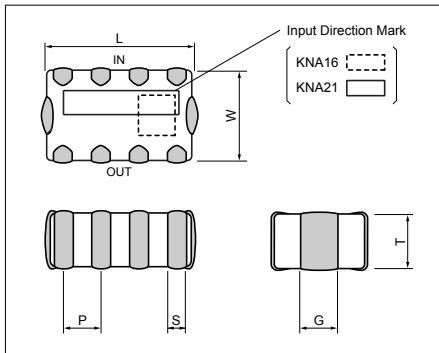
Specifications

| Part Number | Cut off Freq. (MHz) | Capacitance (+25/-20%) (pF) | Attenuation (Typical) | Rated current(mA) | Rated voltage(VDC) |
|-------------|---------------------|-----------------------------|-----------------------|-------------------|--------------------|
| KNA16300 | 300MHz | 16pF | 800-1000MHz@-25dB | 35mA | 25VDC |
| KNA21301 | 300MHz | 15pF | 800-2000MHz@-20dB | 35mA | 25VDC |
| KNA21400 | 400MHz | 18pF | 800-1000MHz@-20dB | 50mA | 25VDC |

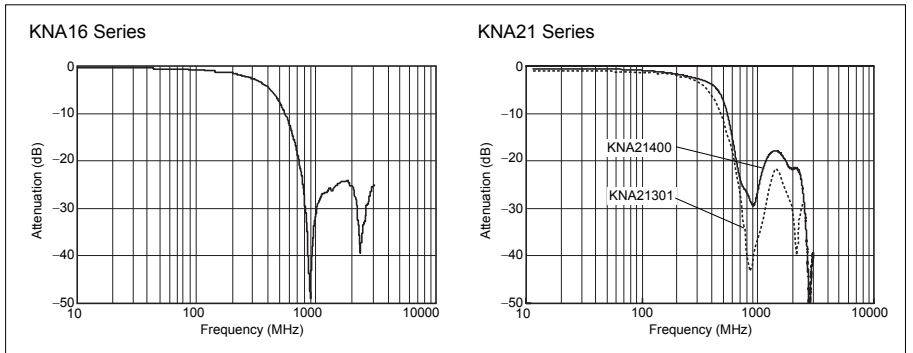
Operating Temperature: -25 to 85(°C)

Dimensions

(Unit : mm)



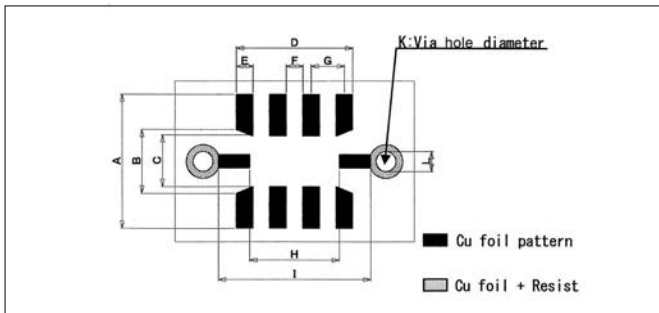
Frequency Characteristics



| | L | W | T | P | S | G |
|-------|-----------|----------|----------|------|------------|------------|
| KNA16 | 1.60±0.08 | 0.8±0.08 | 0.50±0.1 | 0.40 | 0.20±0.075 | 0.20±0.075 |
| KNA21 | 2.0±0.2 | 1.25±0.2 | 0.7±0.15 | 0.50 | 0.25±0.1 | 0.40±0.15 |

Recommended Land Pattern

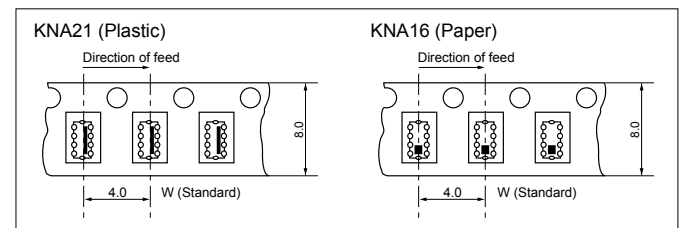
(Unit : mm)



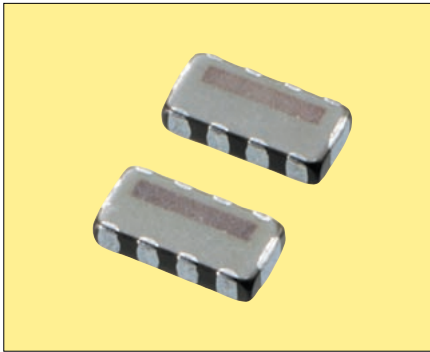
Packaging Specification

- Taping
 - KNA16 : 5,000/reel : STD.
 - 4,000/reel : Opt.
 - KNA21 : 3,000/reel : STD.

(Unit : mm)



| CODE | A | B | C | D | E | F | G | H | I | K | L |
|-------|------|------|------|------|------|------|------|------|------|------|------|
| KNA16 | 1.10 | 0.60 | 0.50 | 1.40 | 0.20 | 0.20 | 0.40 | 1.30 | 1.80 | 0.20 | 0.20 |
| KNA21 | 2.00 | 0.95 | 0.75 | 1.75 | 0.25 | 0.25 | 0.50 | 1.35 | 2.45 | 0.30 | 0.20 |



RoHS Compliant

Features

- Distributed constant type LC filter. Prevents ringing caused by circuit impedance. Suitable for high speed digital circuits and video signal lines.
- Stable noise attenuation over wide frequency ranges.
- Low profile (H=0.85mm max.) suitable for miniature electronic equipments.
- First class auto-placement

Applications

- PCs, Laser Printers, Cellular Phone, Clock Data Lines for LCD Display
- High Speed Video Signal Circuits and Interface Circuits
- High Speed Digital Circuits
- Anti-Noise Solution
- Achieves Effective Noise Suppression in Noisy High Speed Circuits without Signal Waveform Distortion

How to Order

KNA 32 050 - W 3
① ② ③ ④ ⑤

- ① Series
- ② Size EIA (EIAJ)
32 :1206 (3216)
- ③ Frequency

| | | | |
|------------|--------|------------|--------|
| 050 | 50MHz | 200 | 200MHz |
| 100 | 100MHz | | |

*Frequency at Attenuation typical 3dB, max. 6dB

- ④ Taping Direction (See Fig.1)
W: Standard
- ⑤ Quantity per Reel

| | |
|----------|----------|
| 3 | 3000pcs. |
|----------|----------|

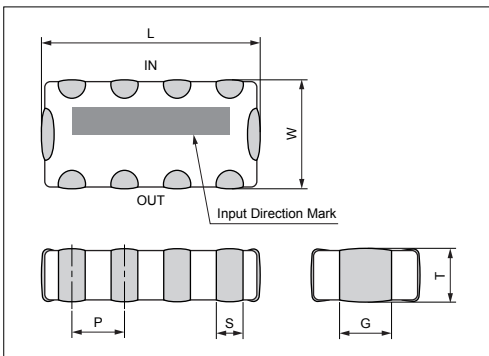
Specifications

| Part Number | Cut off Freq. (MHz) | Capacitance (+25/-20%) (pF) | 20dB Attenuation (Typecal) | Rated current(mA) | Rated voltage(VDC) |
|-----------------|---------------------|-----------------------------|----------------------------|-------------------|--------------------|
| KNA32050 | 50MHz | 115pF | 350 – 850MHz | 100mA | 25VDC |
| KNA32075 | 75MHz | 82pF | 400 – 900MHz | 100mA | 25VDC |
| KNA32100 | 100MHz | 65pF | 450 – 950MHz | 100mA | 25VDC |
| KNA32150 | 150MHz | 45pF | 600–1100MHz | 100mA | 25VDC |
| KNA32200 | 200MHz | 35pF | 700–1200MHz | 100mA | 25VDC |

Operating Temperature: -25 to 85(°C)

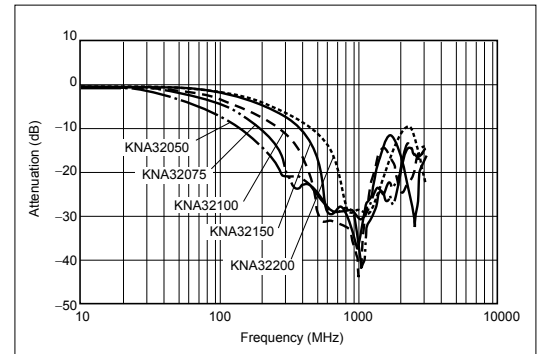
Dimensions

(Unit : mm)



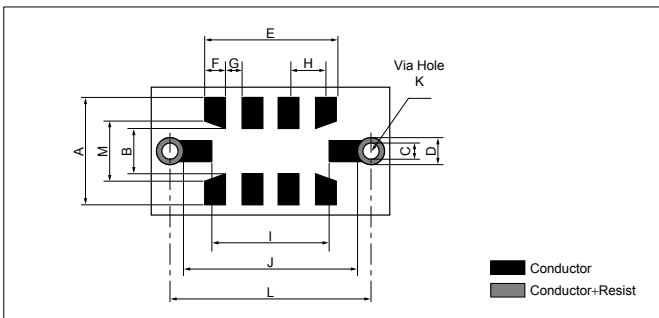
| | KNA32 |
|----------|--------------|
| L | 3.2±0.2 |
| W | 1.6±0.2 |
| T | 0.75±0.1 |
| P | 0.8 |
| S | 0.35±0.15 |
| G | 0.80±0.20 |

Frequency Characteristics



Recommended Land Pattern

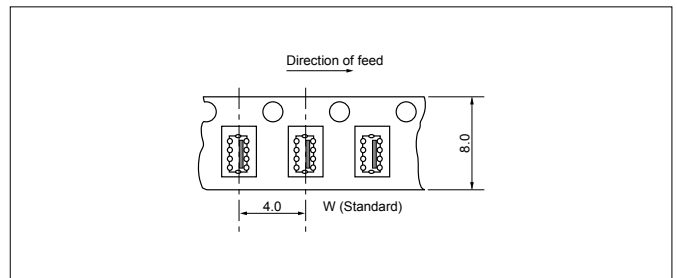
(Unit : mm)



Packaging Specification (Fig.1)

- Taping (3,000/reel)

(Unit : mm)



| CODE | A | B | C | D | E | F | G | H | I | J | K | L | M |
|------------------|-----|-----|-----|-----|-----|-----|-----|-----|-----|-----|------------|-----|-----|
| DIMENSION | 2.2 | 1.0 | 0.4 | 0.6 | 2.8 | 0.4 | 0.4 | 0.8 | 2.6 | 3.8 | 0.3 to 0.4 | 4.2 | 1.3 |