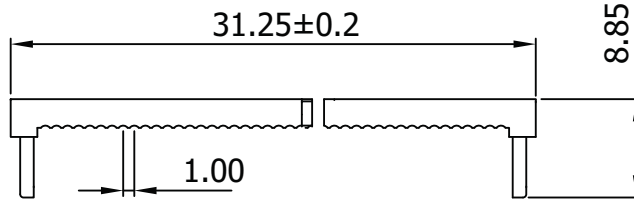
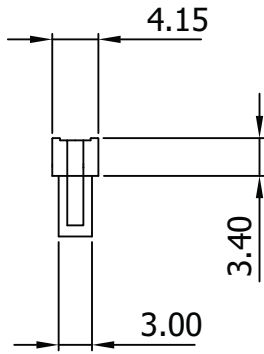


SR

### I.D.C SOCKET DUAL-ROW

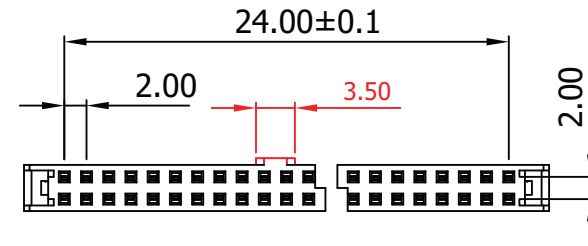
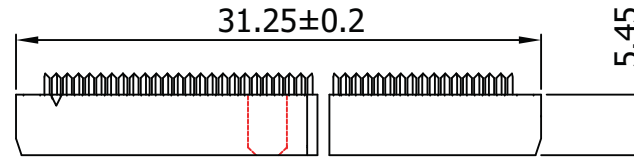
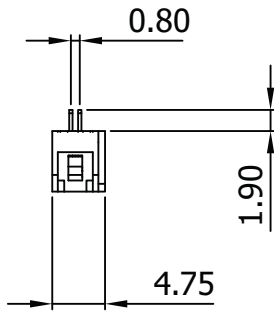


**Material:**

- Insulator: P.B.T. 30% Glass Fiber, UL 94V-0
- Contact Material: Phosphor Bronze, Gold flash over Nickel

**Electrical:**

- Current Rating: 1Amp DC
- Insulation Resistance: 1,000MΩ Min.
- Dielectric Withstanding: 500V AC
- Operating Temperature: -55°C ~ +105°C



Unit: MM±0.30MM

Scale	1:1					Name	Item No.
TOLERANCE					Drawn	10.19.11	<b>AWP2-26-7241-T-R</b>
X.X	±0.40				Approved		
X.XX	±0.25						Drawing No.
X.XXX	±0.15						<b>rev00</b>
Angle	±3°						
							Sheet
		Modification	Date	Name	<b>ASSMANN</b> components		

