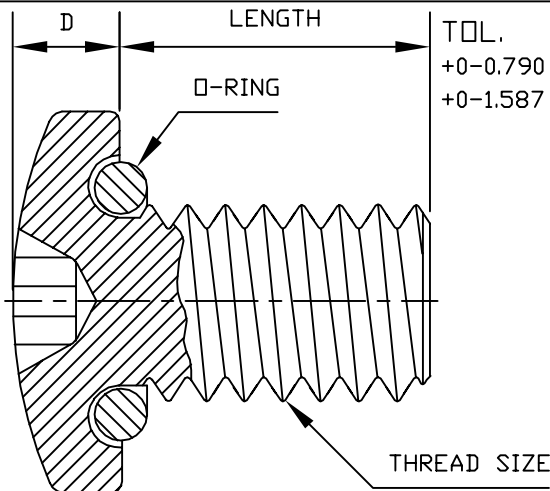
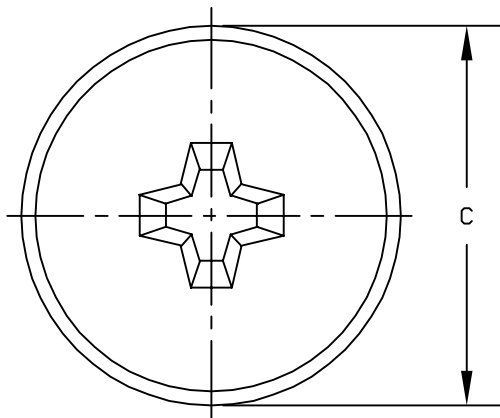


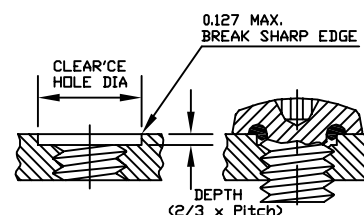
ALL DIMENSIONS IN MILLIMETERS



TOL.  
+0-0.790 UP TO 25.4  
+0-1.587 25.4 TO 50.8

THREAD SIZE	C max	D max	Head Driver Size	RECOM. CLEAR. HOLE		LENGTH
				MIN.	MAX.	
M 2x0.4	4.830	1.600	#1	2.310	2.410	4 to 12 mm
M 2.5x0.45	5.460	2.100	#1	2.670	2.840	4 to 12 mm
M 3x0.5	6.700	2.400	#2	3.550	3.650	4 to 40 mm
M 3.5x0.6	8.100	2.600	#2	3.890	3.990	4 to 40 mm
M 4x0.7	8.690	3.050	#2	4.390	4.540	4 to 40 mm
M 5x0.8	9.900	3.700	#2	5.560	5.660	6 to 40 mm
M 6x1	12.580	4.600	#3	6.730	6.830	6 to 50 mm

#### TYPICAL CLEARANCE HOLE DETAIL



#### STANDARD SPECIFICATIONS & COMMON OPTIONS (HOW TO ORDER)

STD. SCREW MATERIAL: TYPE 18/8 STAINLESS STEEL PER DFARS (OTHER MATERIALS AVAILABLE)

STD. SCREW FINISH: NATURAL (PASSIVATED PER MIL-STD-171 UNLESS OTHERWISE SPECIFIED)

STD. O-RING MATERIAL: SILICONE RUBBER (SEE TABLE FOR O-RING OPTIONS)

SAMPLE CATALOG NO.		RM3X12-2701-BLKOX
SCREW TYPE	RM	PAN HEAD WITH CROSS RECESS
THREAD	3	ENTER BASIC THREAD SIZE
	X	
LENGTH	12	ENTER LENGTH
O-RING SUFFIX	-2701	ENTER FROM TABLE
OPTIONS	-BLKOX	ENTER FROM TABLE

AVAILABLE O-RING MATERIALS		
Compound Suffix	Material	Service Temp.
-2701	Silicone Rubber	-150°F to 500°F -101°C to 260°C
-2615	Fluoro-Silicone Rubber	-78°F to 450°F -61°C to 232°C
-5701	Viton® A	-20°F to 400°F -29°C to 204°C
-4601	Buna N (NBR)	-65°F to 250°F -54°C to 121°C
-3701	Neoprene (EPR)	-65°F to 300°F -54°C to 149°C
-7601	Ethylene Propylene (EPDM)	-65°F to 300°F -54°C to 149°C

COMMON OPTIONS	
SUFFIX	DESCRIPTION
-BLKOX	BLACK OXIDE PER MIL-C-13924A, CLASS 2
-NY	LOCKING NYLON PELLET
-LY	LOCKING NYLON STRIP
-TP	LOCKING NYLON STD. PATCH
-HTP	HIGH TEMP. LOCKING NYLON PATCH

K	CHANGED Cmax of M2 from 4.240 to 4.830	S. GOK	09.09.10
J	ADDED "PER DFARS" FOR THE SCREW MATERIAL	S. GOK	07.02.09
I	NEW DRAWING FORMAT	S. GOK	01.21.09
H	CHANGED HEAD DIA. and HEAD HEIGHT of ALL THREAD	S. GOK	12.12.08
REV.	DESCRIPTION	DATE	
MAXIMUM AND MINIMUM MEASUREMENTS ARE STATED DIRECTLY ON EACH DIMENSION.		ENG.	
TITLE: SEELSKREW®, METRIC PAN HEAD		DWN. J. PAULUMBO	12.16.58
MAT'L: AS NOTED		CHKD.	
FINISH: AS NOTED		SCALE	
		DWG. NO.	RM-0000-00-00

THIS DRAWING COVERS PROPRIETARY ITEM AND IS THE PROPERTY OF THE APM-HEXSEAL CORPORATION.  
THIS DRAWING IS NOT TO BE COPIED OR USED WITHOUT THE WRITTEN APPROVAL OF AN OFFICER OF THE APM-HEXSEAL CORPORATION.