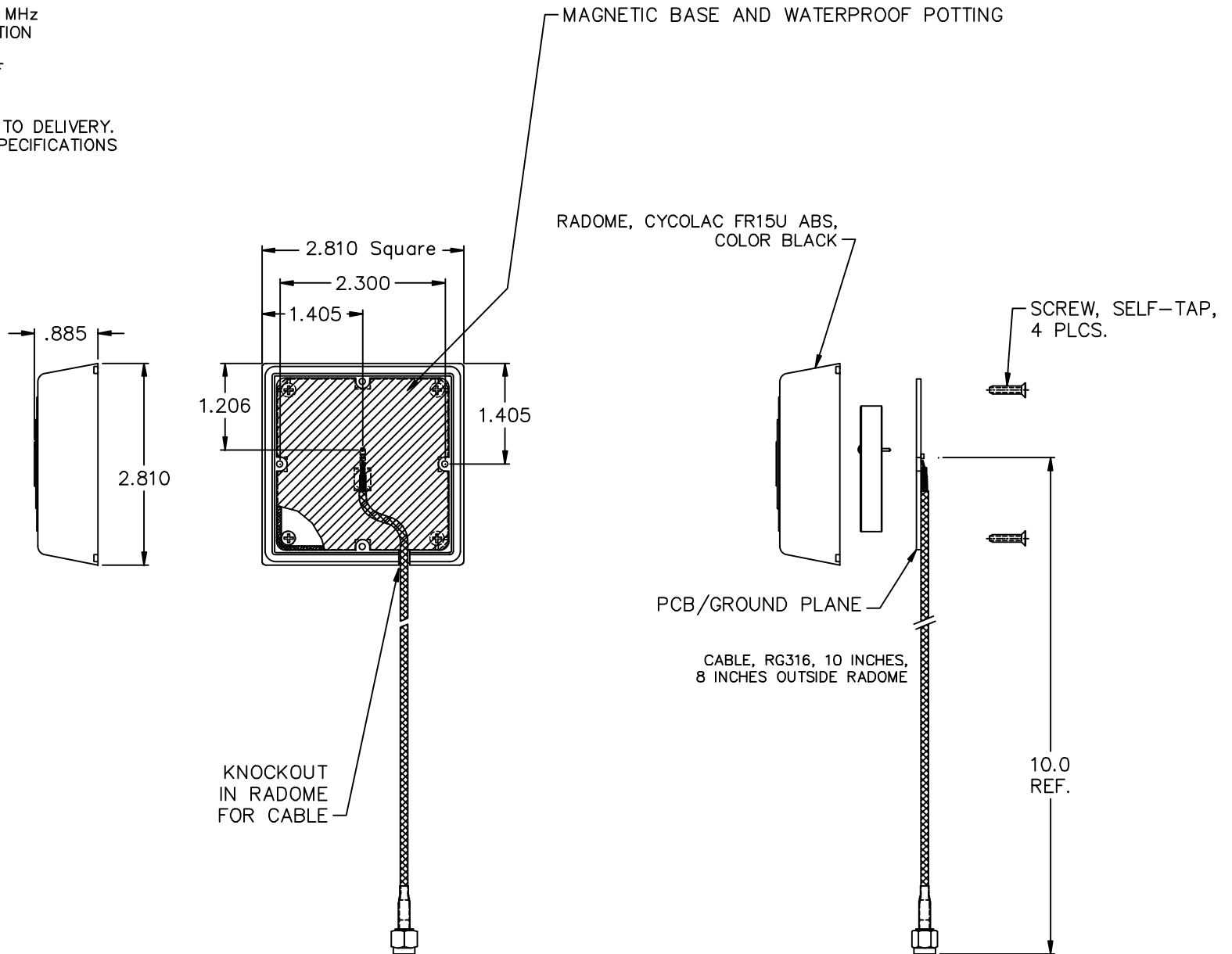



NOTES:

1. ELECTRICAL SPECIFICATIONS:  
 CENTER FREQUENCY = 1615±10 MHz  
 LEFT HAND CIRCULAR POLARIZATION  
 2:1 VSWR B.W. = 135MHz MIN.  
 GAIN SHALL BE 3dBic MIN. @ CF  
 A/R SHALL BE 6dB MAX. @ CF  
 Z<sub>IN</sub> = 50 OHMS
2. 100% ELECTRICAL TEST PRIOR TO DELIVERY.
3. FOOTPRINT AND ELECTRICAL SPECIFICATIONS ARE SUBJECT TO CHANGE.



										00	REV. NO.	UNLESS OTHERWISE SPECIFIED DIMENSIONS ARE IN INCHES. DO NOT SCALE. Ⓢ THIRD ANGLE	TOLERANCES UNLESS OTHERWISE SPECIFIED Fractions ± 1/64 Dec. .xx± .01 Dec. .xxx± .005 Angles ±0° 30'	 SPECTRUM CONTROL, INC.	FAIRVIEW PENNSYLVANIA
										CHANGE NOTICE	Dwn. KAUFFMAN Date 5-25-10				Description
										CN 54549-ENG	Engr. J. KRAUS Sheet 1 of 1				ASSEMBLY DRAWING
															AR1615CC1575XXF