

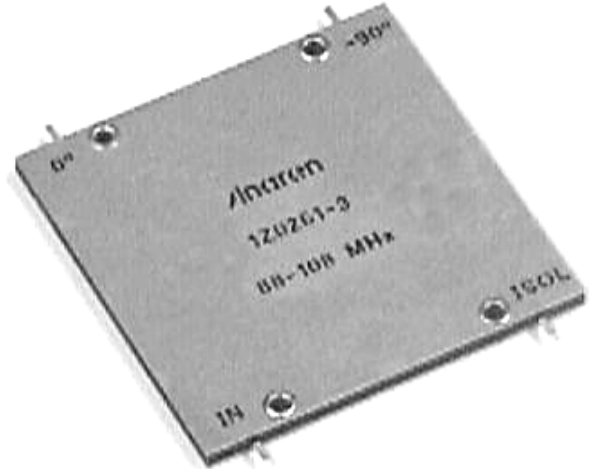
### Hybrid Couplers High Power 3 dB, 90°

#### Applications

- Microstrip Circuits
- Power Amps
- Dividers/Combiners
- Switch Networks
- Balanced Detectors
- Antenna Feeds

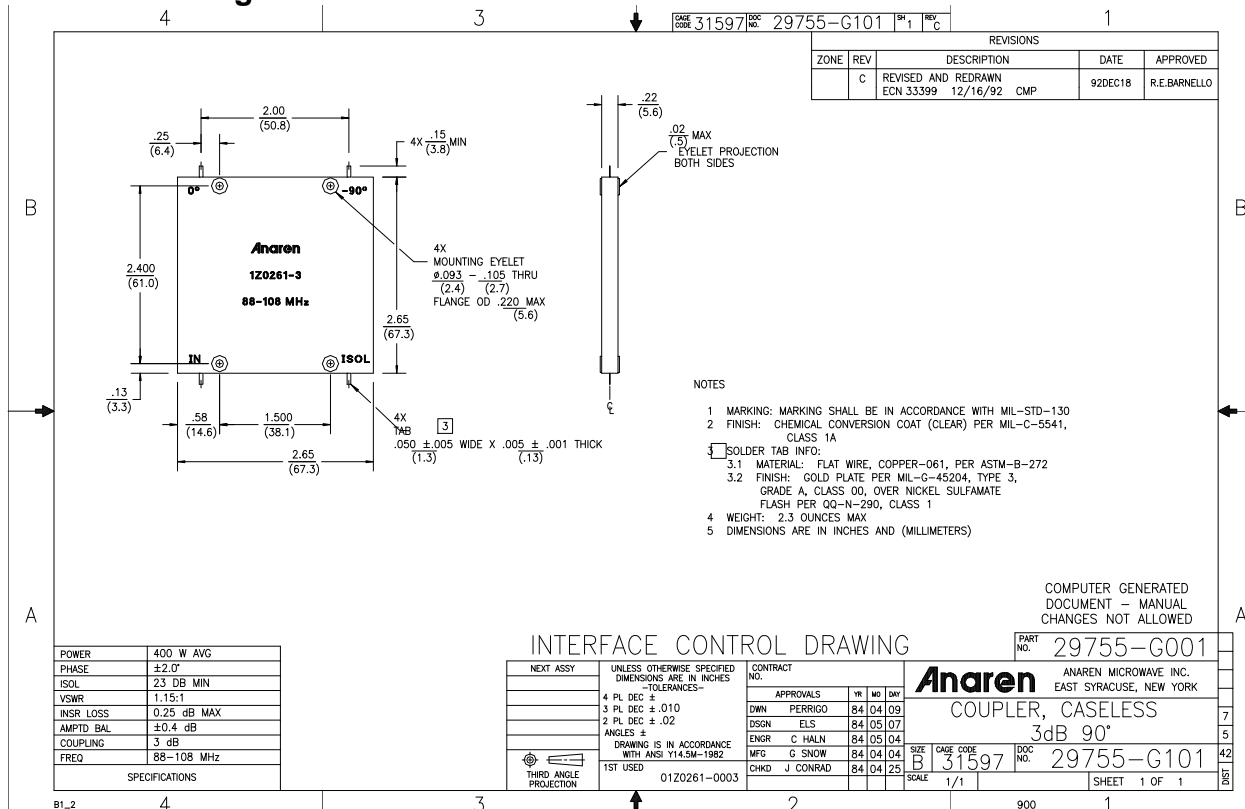
#### Features

- 0.088 – 0.108 GHz
- 2 – Way power Split
- Welded Tab mount
- Reliable Performance
- Handles 400 Watts
- Meets MIL-E-5400 Class 3 Requirements

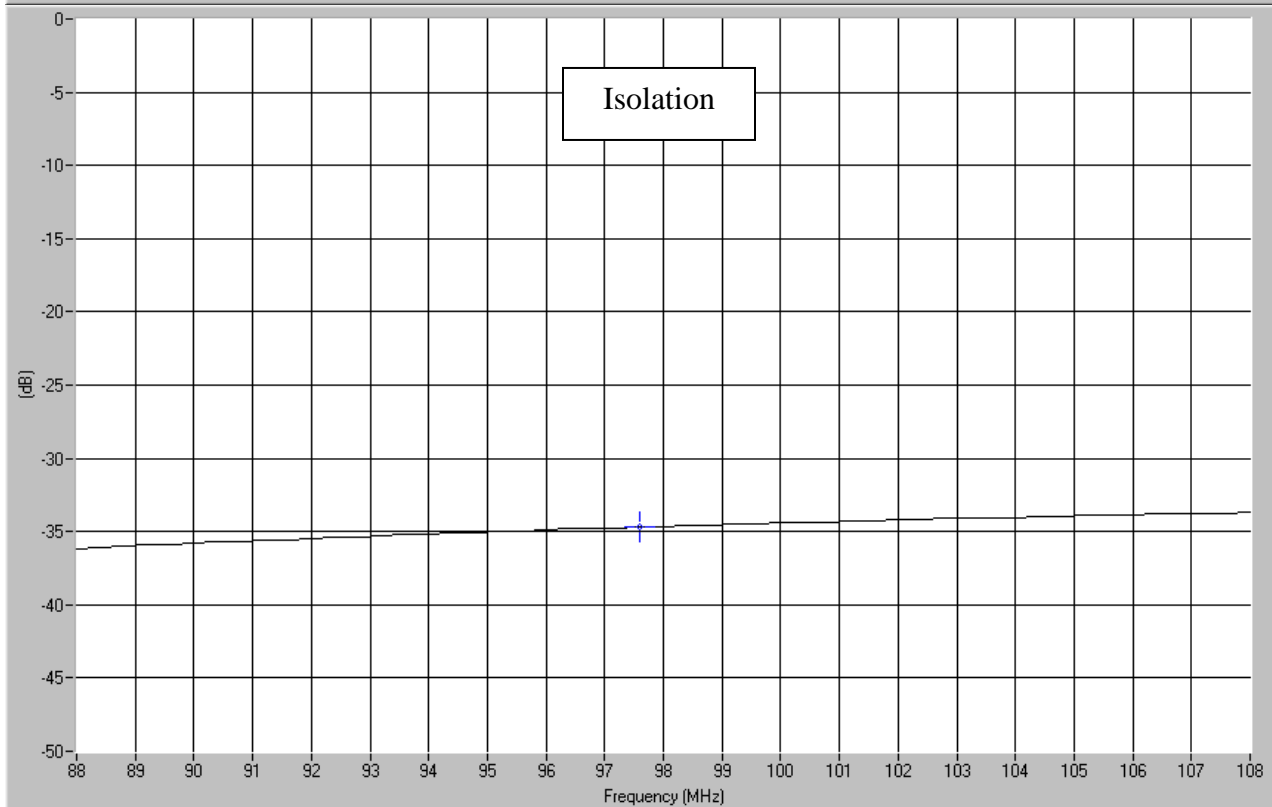
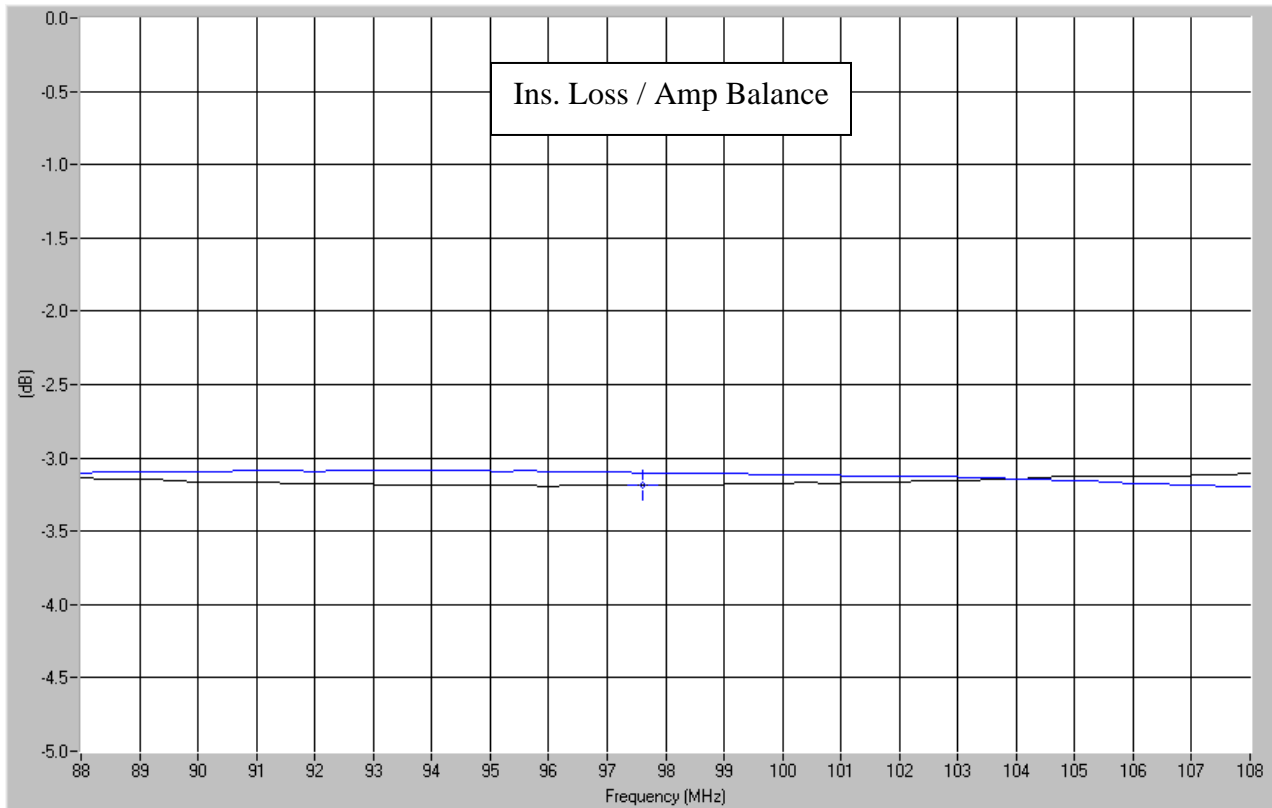


**NOTES:** Anaren Power rating applies when solder tab/coupler interface has been conformally coated.  
Electrical and Mechanical Specifications subject to change without notice.

#### Outline Drawing



## Typical Test Data Plots



USA/Canada: (315) 432-8909  
Toll Free: (800) 411-6596  
Europe: +44 2392-232392

**Anaren**  
What'll we think of next?<sup>™</sup>