

# User Guide for the AD7944/AD7985/AD7986, 14-/16-/18-Bit PuLSAR® ADCs

## Features

- Full-featured evaluation board for the [AD7944/AD7985/AD7986](#)
- PC Control in conjunction with the converter and evaluation development board [EVAL-CED1Z](#)
- PC software for control and data analysis of time and frequency domain
- Versatile analog signal conditioning circuitry
- On-board reference, clock oscillator, and buffers
- Standalone capability



## System Requirements

- Windows XP SP2
- Windows Vista
- Windows 7
- USB 2.0 Port

## Software needed

- Enclosed CD or available via Website download

## Evaluation Kit Contents

- Evaluation board (as ordered EVAL-AD7944EDZ, EVAL-AD7985EDZ, or EVAL-AD7986EDZ)
- Software CD

## Documents required

- [AD7944](#) data sheet
- [AD7985](#) data sheet
- [AD7986](#) data sheet

## Equipment required

- Precision source
  - DC source (low noise for checking different input ranges)
  - AC source (low distortion).
- Band-pass filter suitable for 16-bit or 18-bit testing (value based on signal frequency).
- SMB cable
- Evaluation converter evaluation and development board, [EVAL-CED1Z](#).
- World-compatible 7 V dc supply (enclosed with [EVAL-CED1Z](#))

# General Description

The EVAL-AD79XXEDZ is an evaluation board for the 20-lead [AD7944](#) (14-bit), [AD7985](#) (16-bit), and [AD7986](#)(18-bit) PulSAR® analog-to-digital converters (ADCs). On-board components include a high precision, buffered band gap 5.0 V reference ([ADR435](#)), reference buffers ([AD8032](#)), a signal conditioning circuit with two op-amps ([AD8021](#)), and an FPGA for deserializing the serial conversion results. The evaluation board interfaces to the CED capture board by using a 96-pin DIN connector. In addition, SMB connectors, J1 and J2, are provided for the low noise analog signal source.

# Quickstart

1. Install the software from the enclosed CD or by downloading from the Analog Devices, Inc., Website, at [www.analog.com](http://www.analog.com).
  1. Ensure the evaluation board is disconnected from the USB port of the PC while installing the software.
  2. A PC restart may be required after installation.
2. Connect the EVAL-CED1Z board to the evaluation board as shown in Figure 2.
3. Connect the power supply adapter included in the kit to Connector J4 on the [EVAL-CED1Z](#) board.
4. Connect the EVAL-CED1Z board to the PC via the USB cable.
  1. Choose to automatically search for the drivers for the [EVAL-CED1Z](#) board if prompted by the operating system.
  2. For Windows XP you may need to search for the [EVAL-CED1Z](#) drivers.
5. Launch the EVAL-AD7944/AD7985/AD7986EDZ software from the Analog Devices subfolder in the Programs menu.
6. Select the appropriate device from the drop down menu [AD7944](#), [AD7985](#), or [AD7986](#).
7. Apply a signal source to the AIN+ /AIN- SMB inputs on the evaluation board.
8. Configure the signal source for the appropriate signal applied to the input of the device.
9. Capture data by initiating a single capture (F3) or a continuous capture (F4).
10. See details on configuring the software in the Running the ADC Analysis Software section.

Note that the measurements made by Analog Devices use the Audio Precision SYS-2522.



**Figure 2. Hardware Configuration—Setting up the Evaluation Board**

## Evaluation Board Hardware

The low power, [AD7944/AD7985/AD7986](#) ADCs offer very high performance of up to 2.0 MSPS ([AD7986](#)) and 2.5 MSPS ([AD7944](#) and [AD7985](#)) throughput rates using a flexible parallel interface on the 96-pin interface to the [EVAL-CED1Z](#) board. The evaluation board is designed to demonstrate the performance of the ADC and to provide an easy-to-understand interface for a variety of system applications. The evaluation board is ideal for use with the Analog Devices Converter and Evaluation Development EVAL-CED1Z (CED). The design offers the flexibility of applying external control signals

and is capable of generating conversion results on parallel 16-bit wide buffered outputs. The figure above shows the EVAL-AD7944/AD7985/AD7986EBZ evaluation board. The on-board FPGA, U3, provides the necessary control signals for conversion and deserializes the serial data as the [EVAL-CED1Z](#) board uses a parallel interface. The evaluation board is a flexible design that enables the user to choose among many different board configurations, analog signal conditioning, reference, and different modes of conversion data. This evaluation board is a 6-layer board carefully laid out and tested to demonstrate the specific high accuracy performance of the [AD7944](#), [AD7985](#), and [AD7986](#). Figure 23 to Figure 28 show the schematics of the evaluation board.

## Device Description

The [AD7944](#) is a 14-bit, 2.5 MSPS successive approximation analog-to-digital converter (SAR ADC), whereas the [AD7985](#) is a 16-bit version of the SAR ADC. The [AD7986](#) is an 18-bit 2 MSPS SAR ADC. These ADCs are low power and high speed and include an internal conversion clock, an internal reference (and buffer), error correction circuits, and a versatile serial interface port. On the rising edge of CNV, the ADC samples an analog input, IN+, between 0 V and REF with respect to the ground sense, IN-. The ADCs feature a very high sampling rate turbo mode (TURBO is high) and a reduced power normal mode (TURBO is low) for low power applications where the power is scaled with the throughput. A full description of these products is available in their respective data sheets and should be consulted when using this evaluation board.

## Power Supplies

Power is supplied to the board through P3 when used with the [EVAL-CED1Z](#). Each supply is decoupled at the point where it enters the board and again at each device. A single ground plane on this board minimizes the effect of high frequency noise interference.

## Standalone Operation

The evaluation board can be used in standalone mode without the CED controller board. In this case, power supplies need to be applied to the board at P4 or at the relevant test points. At a minimum, the board requires  $\pm 5$  V, +12 V, +7 V, or + 2.5 V. See Figure 23 for details regarding power supply connections.

## Grounding

The evaluation board ground plane is separated into two sections: a plane for the digital interface circuitry and an analog plane for the analog input and external reference circuitry. To attain high

resolution performance, the board was designed to ensure that all digital ground return paths do not cross the analog ground return paths by connecting the planes together directly under the converter.

## Conversion Control

The on-board FPGA performs a number of digital functions, one of them being the deserialization of the serial conversion results as the CED data capture boards uses a 16-bit parallel interface. If desired, the deserialized data can be monitored on the 96-pin edge connector, P1, BD[15:0]. The CED uses a buffered busy signal, BBUSY, as the general interrupt for data.

## Analog Inputs

The analog inputs to the evaluation board are J1, J2, and SMB (push on). These inputs are buffered with dedicated amplifier circuitry (A2, A3, and discreties) to allow configuration changes such as positive or negative gain, input range scaling, filtering, addition of a dc component, and use of different op-amps and supplies. The analog input amplifiers are set as unity-gain buffers at the factory. The supplies are selectable with solder pads and are set for the +7 V to –5 V ranges. The default configuration sets both A2 and A3 at midscale generated from either a buffered reference voltage divider or the internal reference of the ADC. The evaluation board is factory configured for providing either a single-ended path or a fully differential path. Because the AD7986 is differential, both inputs and amplifier circuits are used to buffer the IN+ and IN- inputs of the ADCs. For the AD7944 and AD7985 evaluation boards, only the J2, A3, and associated circuitry is used in the path. For dynamic performance, an FFT test can be executed by applying a very low distortion ac source. For low frequency testing, an audio precision source can be used directly because the outputs on these are isolated. Set the audio precision outputs for balanced and floating. Although different sources can be used, most are single ended and use a fixed output resistance. Because the evaluation board uses the amplifiers in unity gain, the noninverting input has a common-mode input with a 590  $\Omega$  series resistor, which needs to be taken into account when directly connecting a source (voltage divider).

## Serial Interface

The 3-wire serial interface SDI, SCK, and SDO together with CNV are present on the digital interface test points, and FPGA buffered versions are on the 96-pin connector, P1. The on-board Altera FPGA can be reprogrammed to the user's configuration as the serial device and U1 is in-circuit programmable.

## Jumpers, Solder Pads and test points

A number of 3-pin jumpers, solder pads, and test points are provided on the evaluation board and are detailed in Table 1, Table 2, and Table 7. Most of the 3-pin jumpers are used for the reference selection of the ADCs (see the Reference Options section for details and settings).

## Table 1. 3-Pin Jumper Descriptions

Jumper	Default Position	Function
P2	REF to middle	ADC REF/REFIN select
P9	REFS to VREF	On-board reference/external reference selection
P10	BUF to middle	Selection of either Amplifier U2 or bypassing.
P11	REFIN to GND	Selection of either the internal reference and/or reference buffer. Used in conjunction with P12 and P9.
P12	PDREF to VIO	Selection of either the internal reference of the ADC or an external reference.

## Table 2. Solder Pad Descriptions

Solder Pad	Default Position	Function
JP1, JP2	A2, A3 (bottom to middle)	ADC inputs: bottom pad to middle pad are for A2/A3 output. To bypass and use J1/J2 directly, solder top pad to middle pad.
JP3	ADC specific	Single or differential ADC input selection. Top pad to middle pad for the AD7986; bottom pad to middle pad for AD7944 and the AD7985.
JP9, JP10	Left pads	10-lead or 20-lead amplifier to ADC selection for future use.
VDRV-	-5 VA	Buffer amplifier negative supply: Selection of GND or -5 VA.
VDRV+	+7 V	Buffer amplifier positive supply: selection of 12 V, 7 V, or 5 V.
VCC REF	+7 V	Reference circuit positive supply: selection of 12 V or 7 V.
AVDD	+2.5 V	ADC AVDD (analog core) supply: selection of 2.5 V or 5 V on the board or externally. To prevent permanent damage to the ADC, do not solder to 5 V or connect this supply to > 2.5 V.
DVDD	+2.5 V	ADC DVDD (digital core) supply: selection of 2.5 V or 5 V on the board or externally. To prevent permanent damage to the ADC, do not solder to 5 V or connect this supply to > 2.5 V.
BVDD	+5 V	ADC BVDD 5 V supply: selection of 5 V on the board or externally. For an external reference, the best performance is obtained when the reference source that is connected to the REF pins and BVDD are the same. See the External Reference: Factory Configuration section for details.
VIO	+2.5 V	ADC digital input/output supply voltage: selection of 2.5 V or 3.3 V {on board?} or externally.

Solder pads are factory configured for the device being evaluated.

## Reference Options

The AD7944/AD7985/AD7986 each have an internal 4.096 V reference together with an internal buffer useful for using an external reference, or it can use an external 5.0 V reference directly. The evaluation board can be configured to use any of these references. A number of jumpers are used to set the reference and are detailed in Table 3.

### External Reference: Factory Configuration

The evaluation board includes the ADR435 which is a 5 V precision voltage reference. This reference can drive the ADCs and the REF pin directly or it can be buffered with the AD8032; both of which serve as the factory default setting. The best attainable SNR is achieved by using the maximum reference voltage of 5 V (see the appropriate ADC datasheet for details).

**Table 3. Factory Reference Jumper Configuration**

Jumper	Setting
P2	REF and middle
P9	REFS to VREF
P10	BUF to middle
P11	REFIN to GND
P12	PDREF to VIO
BVDD	5 V (factory default)

To use an external reference source as opposed to the internal reference, there are two methods available, as follows:

- For an external unbuffered reference, leave P10 to P12 as the factory settings, open P2, and connect a source to the REF test point.
- The ability to buffer the user external reference is also available. In this case, replace P2, open P9, and apply the source to the VREF test point.

### ADC Reference Supply, BVDD

The evaluation board includes a 5 V source for the ADC reference supply, BVDD, set with a pair of solder pads of either 5 V or EXT\_B, and a test point, EXT\_B. For the best performance, derive this supply from the external reference. To use the EXT\_B, remove the solder from the 5 V pad and solder the EXT\_B pad to BVDD.

## Internal 4.096 V Reference

The ADC has an internal 4.096 V precision reference and can be used on most applications. Connecting PDREF to GND enables the internal reference. When the internal reference is enabled, 4.096 V as well as a 1.2 V band gap are present on the ADC REF pin and test point. Note when using the internal reference, external sources must not be connected to these test points because they are directly connected to the ADC pins.

**Table 4. Internal Reference Jumper Configuration**

Jumper	Setting
P2	Open
P9	REFS to VREF
P10	Don't care
P11	Open
P12	PDREF to GND
BVDD	5 V (factory)

## Internal Reference Buffer

The internal reference buffer is useful when using an external 1.2 V reference. When using the internal reference buffer, applying 1.2 V to REFIN, which is directly connected to the REFIN pin of the ADC, produces 4.096 V at the REF pin of the ADC. Because there is no 1.2 V reference on the board, there are two methods to generate a 1.2 V reference. The first method is to connect an external source to the REFIN test point using the jumper settings listed in Table 5.

**Table 5. Fully External Reference Buffer Jumper Configuration: REFIN Test Point Method**

Jumper	Setting
P2	Open
P9	Don't care
P10	Don't care
P11	Open
P12	PDREF to VIO
BVDD	5 V (factory default)

The second method is to use the U2 op amp to voltage divide down the 5 V output of the ADR435 to 1.2 V by using  $R2/R4 = 1 \text{ k}\Omega/316 \text{ }\Omega$ . To use this method, replace R4 and set the jumpers to the settings listed in Table 6.



**Table 6. Fully External Reference Buffer Jumper Configuration: Divide Down Method**

Jumper	Setting
P2	REFIN to middle
P9	REFS to VREF
P10	BUF to middle
P11	REFIN to pin 1
P12	PDREF to VIO
BVDD	5 V (factory default)

## Evaluation Board Software

### Important Software Pre-Installation Information

The [EVAL-CED1Z](#) board must not be connected to the USB port of the PC until after the software is installed. However, to check that the board has power (evidenced by the green LED light being lit), the 7 V dc supply can be connected to the power input connector on the [EVAL-CED1Z](#).

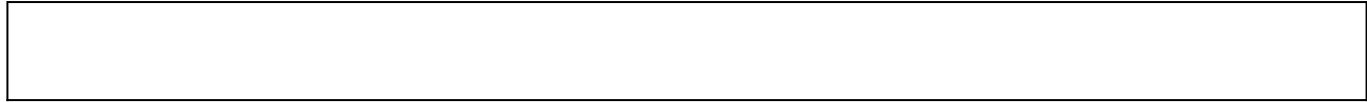
### Software Installation

It is recommended to close all Windows© applications prior to installing the software. The evaluation board comes with a CD as part of the evaluation kit. The latest software versions are always available from the Analog Devices product page, visit [www.analog.com](http://www.analog.com). Note that the user must accept the license agreement during the installation process.



**Figure 3. To Install, the User Must Accept License Agreement**

After downloading the software, it is recommended to use the WinZip extract function to extract all of



the necessary components rather than immediately selecting **setup.exe** from within the zipped file. After extracting the software, click **setup.exe** in the folder created during the extraction process and follow the instructions on the screen. If another version of the software already exists on the computer, it may be necessary to remove it. To remove prior versions of the software, click the Windows **Start** button, select **Control Panel**, and then select **Add or Remove Programs**. When the list populates, navigate to **Analog Devices High Resolution sampling ADC's Evaluation Software** or **PuSAR Evaluation Software** and select Remove.

### Typical Install Process

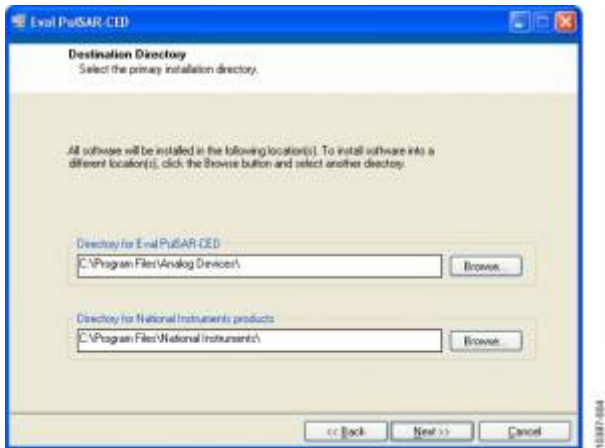
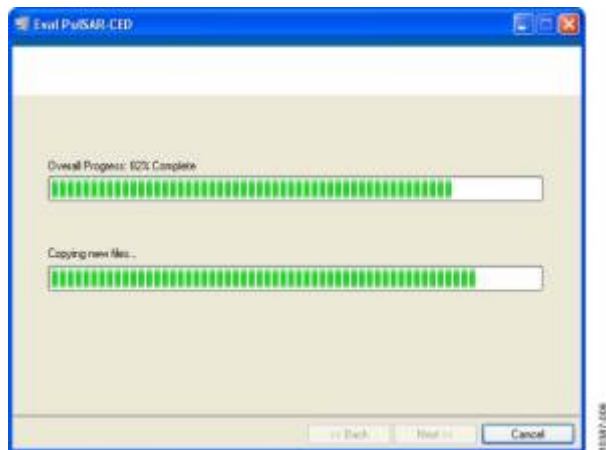


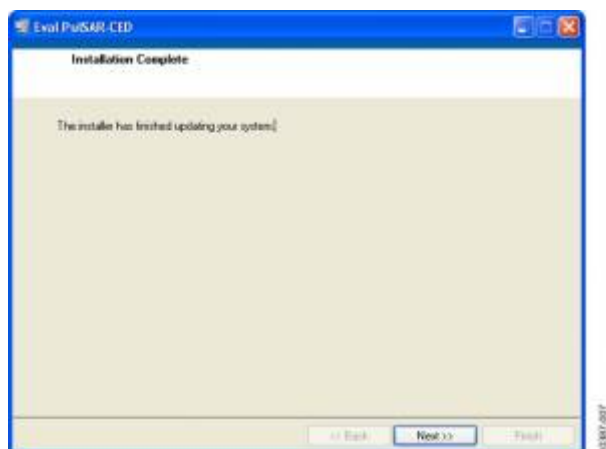
Figure 4. Initiating Install from setup.exe



Figure 5. Default Location for Install Files



**Figure 6. Installing Software**



**Figure 7. Install Complete**

## USB Drivers

The software also installs the necessary USB drivers through a separate installation process. When the software installation completes the drivers installation wizard displays: click Install to install the drivers automatically, as shown in Figure 8 and Figure 9.



**Figure 8. Driver Install Process**



**Figure 9. Install Complete**

After installing the software and drivers, power the CED board and connect it to the PC USB 2.0 port, at which time the Welcome to the Found New Hardware Wizard initiates.



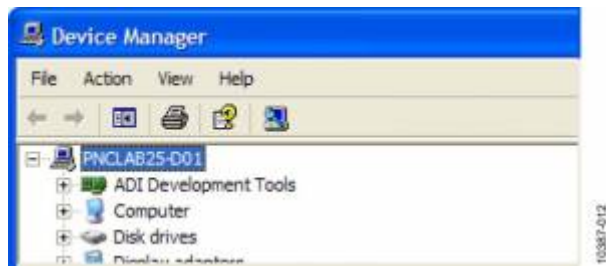
**Figure 10. Found New Hardware**

When installed properly, the hardware wizard displays the following message shown in Figure 11 signaling that the evaluation board software is setup and ready to use.



**Figure 11. Evaluation Board Software Installation Complete**

On some PCs, the Found New hardware Wizard may show up again and, if so, follow the same procedure to install it properly. The Device Manager, shown in Figure 12, can be used to verify that the driver was installed correctly.



**Figure 12. Device Manager Verification**

## Troubleshooting the Installation

If the driver was not installed properly, Windows does not recognize the CEDIZ board and the Device Manager menu displays a question mark for Other devices.



**Figure 13. Device Manager Menu Displaying Unrecognized Device**

The USB Device can be opened to view its uninstalled properties, as shown in Figure 14.



**Figure 14. USB Device Uninstalled Properties**

The most usual reason for uninstalled properties is caused by the installation of the software and drivers by a user without administrative privileges. If this is the case, log on as an administrator with full privileges and reinstall the software.

## Running the evaluation software

The evaluation board includes software for analyzing the AD7944, AD7985, and AD7986. The [EVAL-CED1Z](#) is required when using the software. Use the software to perform the following tests:

- Histogram for determining code transition noise (dc).
- Fast Fourier transforms (FFT) for signal-to-noise ratio (SNR), SNR and signal-to-noise-and-distortion (SINAD), total harmonic distortion (THD), and spurious free dynamic range (SFDR).
- Decimation (digital filtering).

The software is located at <local\_drive>:\Program Files\Analog Devices\PuLSAR ADC Evaluation Software\Eval PuLSAR CED.exe. A shortcut is also added to the Windows Start menu under Analog Devices PuLSAR Evaluation Software, Eval PuLSAR CED. To run the software, select the program from either location.

## Running the ADC Analysis Software

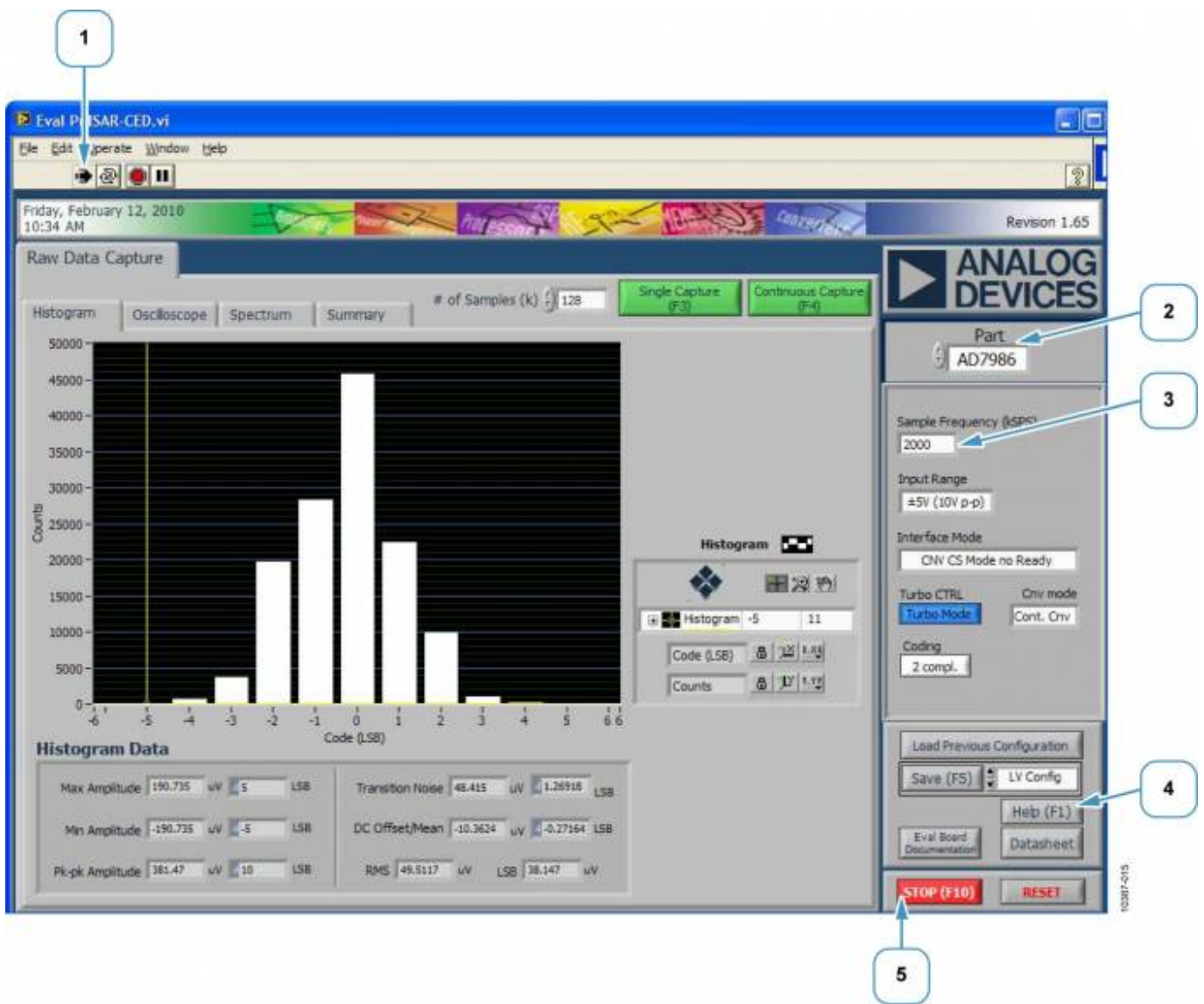
The evaluation board includes software for analyzing the AD7944, AD7985, and AD7986 ADCs. The [EVAL-CED1Z](#) is required when using the ADC analysis software. Use the software to perform the following tests:

- Histogram for determining code transition noise (dc).
- FFT for SNR, SNR and SINAD, THD, and SFDR.

Refer to Figure 15 to Figure 20 for additional details and features of the software. The ADC analysis software is located at C:\Program Files\Analog Devices\PuSAR ADC Evaluation Software\Eval PuSAR CED.exe. A shortcut is also added to the Windows Start menu under Analog Devices PuSAR ADC Evaluation Software, Eval PuSAR CED. To run the software, select the program from either location.

## Software Operation

The following steps detail the operation of the software located in the default directory:  
 <local\_drive>:\Program Files\Analog Devices\PuSAR ADC Evaluation Software\Eval PuSAR CED.exe,  
 which opens the Raw Data Capture window.



**Figure 15. Setup Screen**

1. To start the software, click the arrow (see the area in Figure 15 marked with the Number 1).
  1. When running, the following arrow icon is displayed:
2. Select the device to be evaluated (see the area in Figure 15 marked with the Number 2).
3. Set the controls (see the area in Figure 15 marked with the Number 3) for the following:

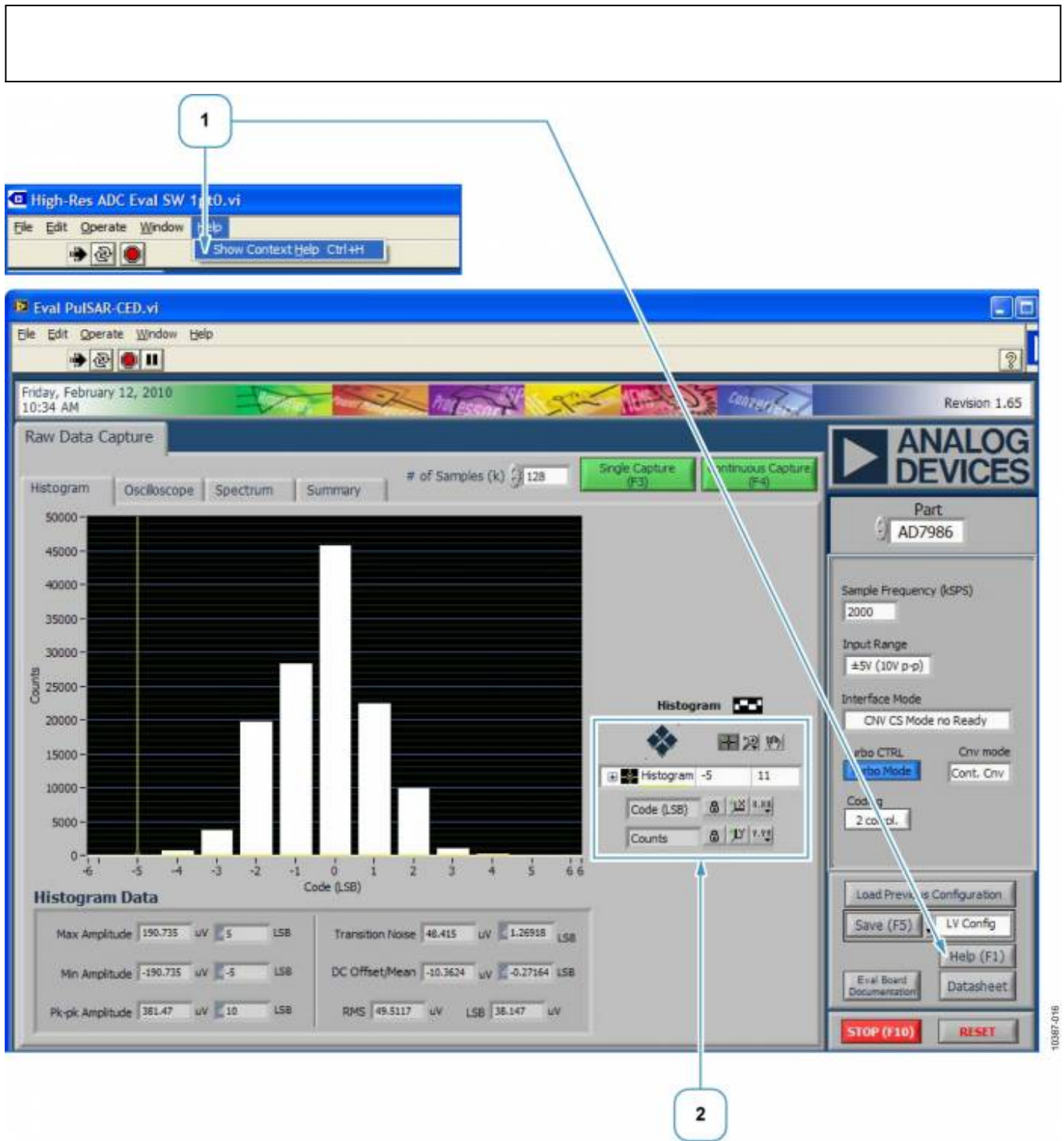
- 
1. Sample Frequency: Enter the sample rate in kHz. Units can be used such as 10k (case sensitive) for 10,000,000 Hz or 10 MSPS.
  2. Input Range: Because the ADCs have a variable input range depending on the reference voltage, select the correct one (4.096 V or 5 V) {the screen shot in Figure 15 shows this to be  $\pm 5V$ , which is correct?} to display the correct LSB size.
  3. Interface Mode: Options for using or not using the busy mode. In busy mode, the SDO can be monitored to see the actual conversion time (BUSY {is this a pin?} high to low transition).
  4. Turbo CTRL: Select the fastest mode, turbo mode, or normal mode. Note that the throughput must be manually changed when changing modes. The
  5. CNV Mode: Selects between continuous (Cont. Cnv) or burst conversion ({Burst Cnv?}) modes. In continuous mode, the ADC is continuously converting. In burst mode, the ADC does not continuously convert.
  6. Coding: For the AD7986, 2 compl must be selected in the Coding field because the ADC result is always twos complement. For the AD7985 and AD7944, binary {is this how the binary selection displays in the Coding box, or is it an abbreviation like 2 compl?} is set because the ADC output is straight binary.
4. Use the controls shown in the area of Figure 15 marked with the Number 4 for functions such saving, printing, help, and so forth. These functions are also accessible from the File menu.
1. Save (F5): In the Save (F5) pull-down menu, there are several options as follows:
    1. LV Config: selects the LabView configuration, which allows the current configuration to be saved to a filename.dat file. This option is useful when changing many of the default controls. To load the saved configuration, click the Load Previous Configuration located above Save (F5).
    2. Html: saves the current screen shot to an html file.
    3. Spreadsheet: saves the current data displayed in the chart in a tab delimited spreadsheet. Raw ADC data includes time domain (in V or code), FFT, or decimated (in dB).
  2. Stop (F10): Click Stop (F10) to stop running the software. Likewise, clicking the stop sign icon, on the top menu bar also stops the software.
  3. RESET: click RESET to reset the CED capture board.

## Context Help

### On-Screen Help

To use the on-screen help. Select Help, Show Context Help or click Help (F1). These function areas on the screen are indicated by Number 1 in Figure 16. Hovering the cursor over most screen items displays useful information for the particular control or displayed unit.





**Figure 16. Context Help and Histogram Controls**

**Histogram Controls**

The histogram controls, shown in the area indicated by Number 2 in Figure 16, are used for axes and zooming panning, as follows:

**Graph Axis Lock**

Locks the graph axis to automatically fit the data.



### **Axis Rescaling**

Uses the last axis set by the user. These allow user to rescale the x- and y-axis, respectively, to the automatic values.

### **Axis Properties**

These are used to set the x- and y-axis properties, such as format, precision, color, and so forth.

### **Cursor Display**

Displays the cursor.

### **Zooming**

Is used for zooming in and out.

### **Panning**

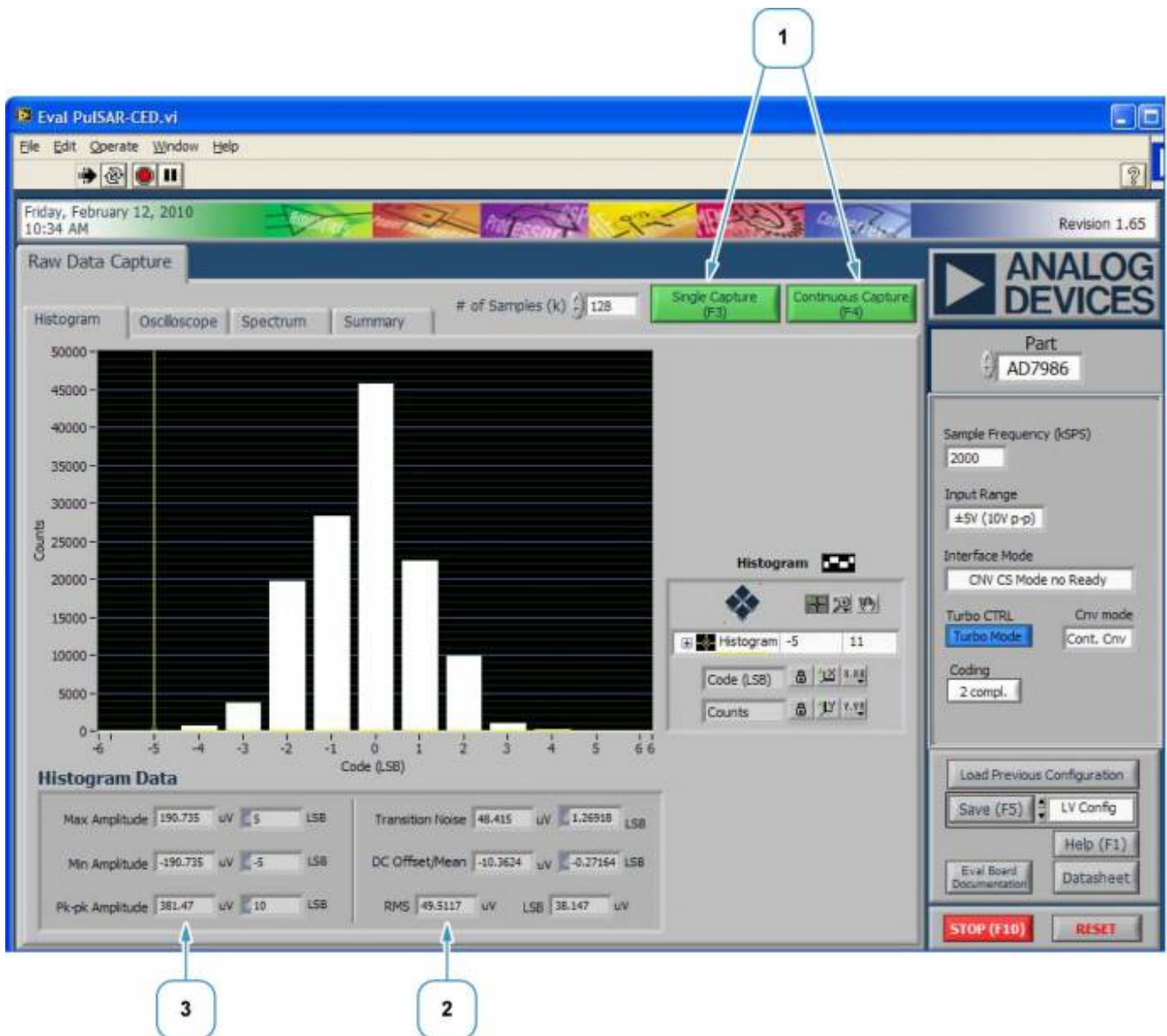
Is used for panning.

### **Graph Properties**

Is used to set various graph properties such as graph type, colors, lines, and so forth.

## **Histogram and Oscilloscope Charts**

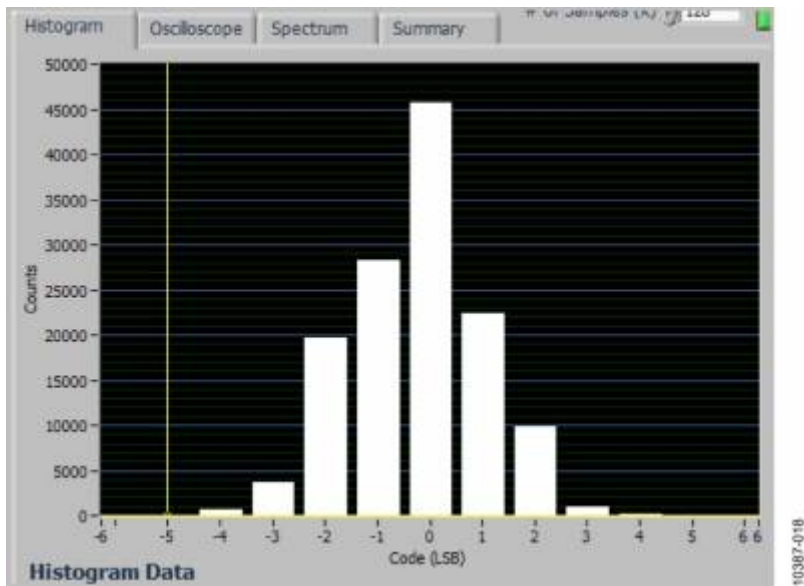
The areas of the Raw Data Capture window that pertain to working with histogram or oscilloscope charts are demarcated by the sections numbered 1, 2, and 3 in Figure 17.



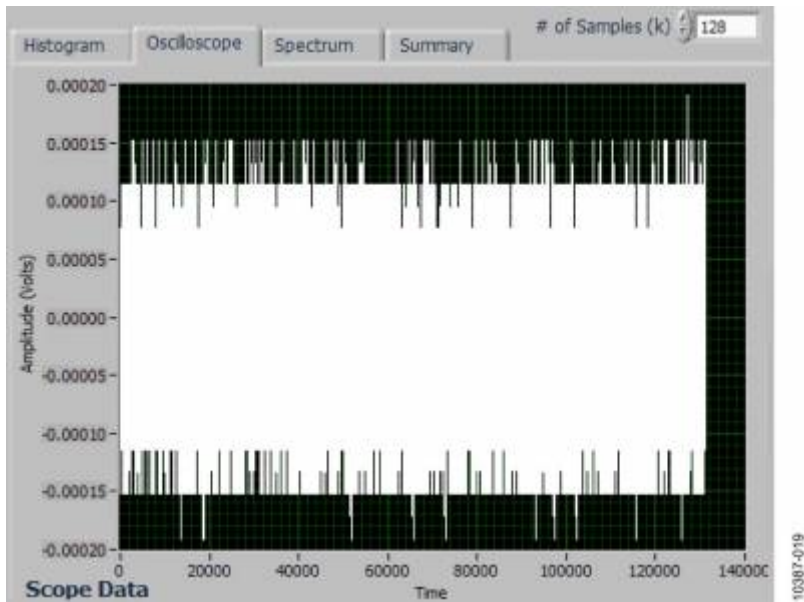
**Figure 17. Histogram Data Window**

**Single or Continuous Capture**

Use the buttons shown in Section 1 in Figure 17 to perform either a single capture or continuous capture of data. Enter the number of samples that are required in the # of Samples (k) field (located to the left of the Single Capture (F3) button). The statistics for the x- and y-axes are displayed in the Histogram Data section of the window, shown as the Number 2 and Number 3 areas within Figure 17. The graphic results are displayed in the chart area of the window. Note that the results can be displayed as either a histogram (see Figure 18) or an oscilloscope (see Figure 19) by selecting the relevant tab, Oscilloscope, above the chart display (shown as Number 1 in Figure 20). Time domain data can also be viewed by using the Oscilloscope tab. In addition, the charts can be displayed together when the Summary tab is selected (see Figure 21).



**Figure 18. Histogram Chart Display**



**Figure 19. Oscilloscope Chart Display (Time Domain)**

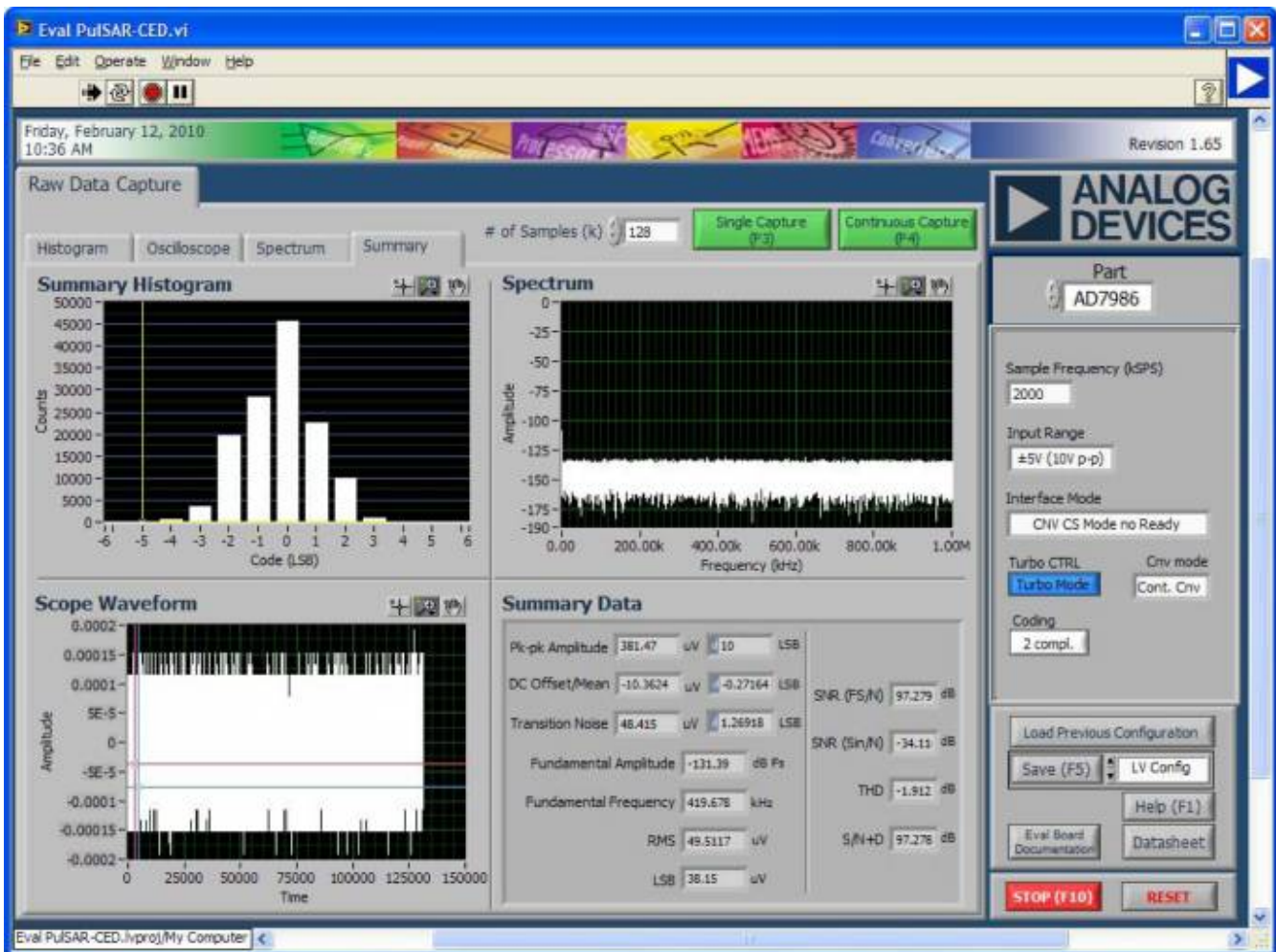


Figure 20. Oscilloscope

10387-020

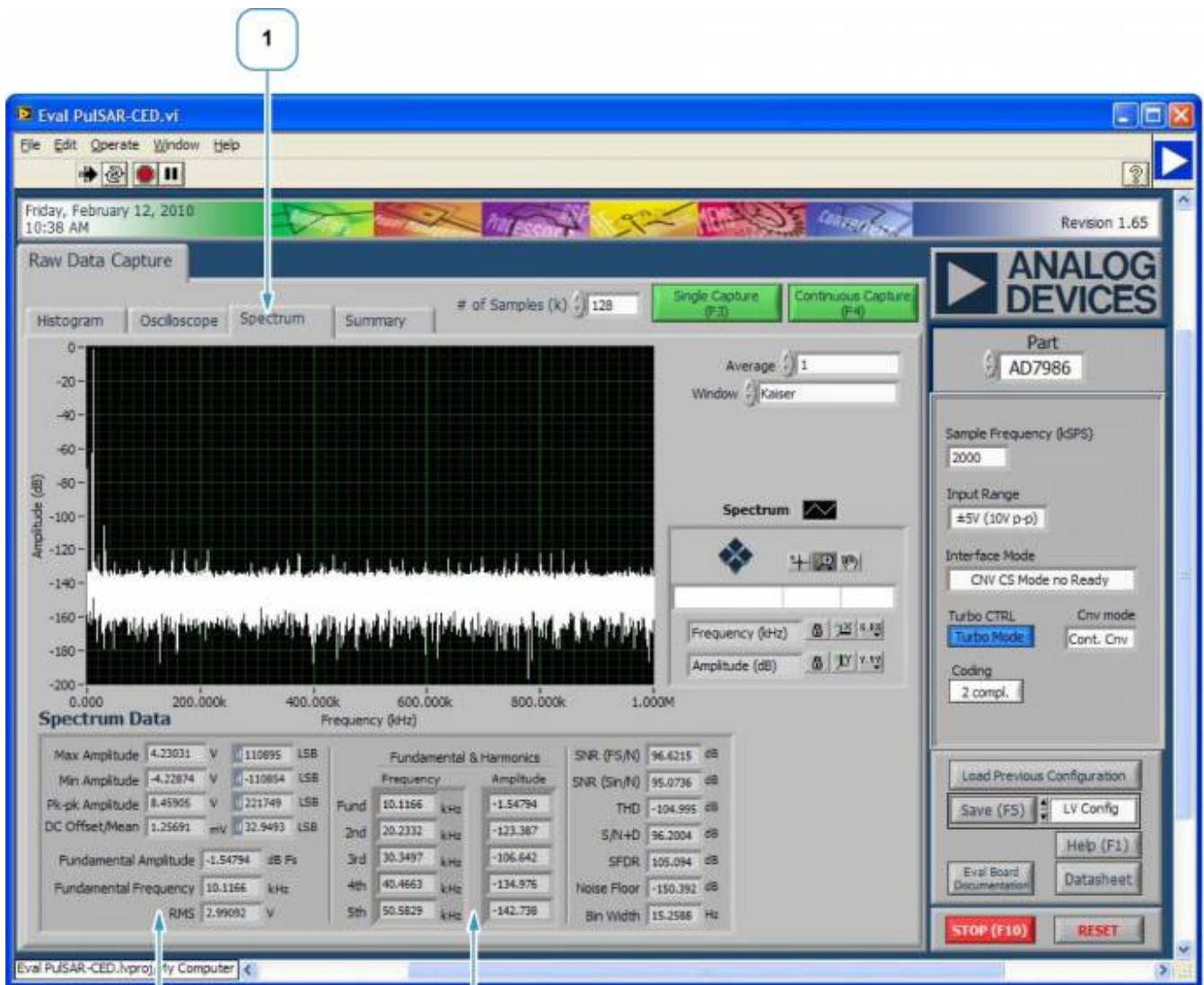


Figure 21. Summary Tab

## FFT Spectrum Data

To review the FFT spectrum data, select the Spectrum tab in the Raw Data Capture window. Figure 22 shows the FFT spectrum window and sections numbered 1, 2, and 3 of this window are described as follows:

## Displaying the FFT

From the Raw Data Capture window, in the section of Figure 22 labeled with Number 1, select the Spectrum tab to display the FFT when the spectrum chart is selected.

## Displaying the Spectrum Data

The Spectrum Data section (numbered 2 and 3 in Figure 22), is located beneath the spectrum chart. These areas of the Spectrum Data section display the data for the x-axis (shown in the area labeled as 2) and y-axis, (shown in the area labeled as 3).

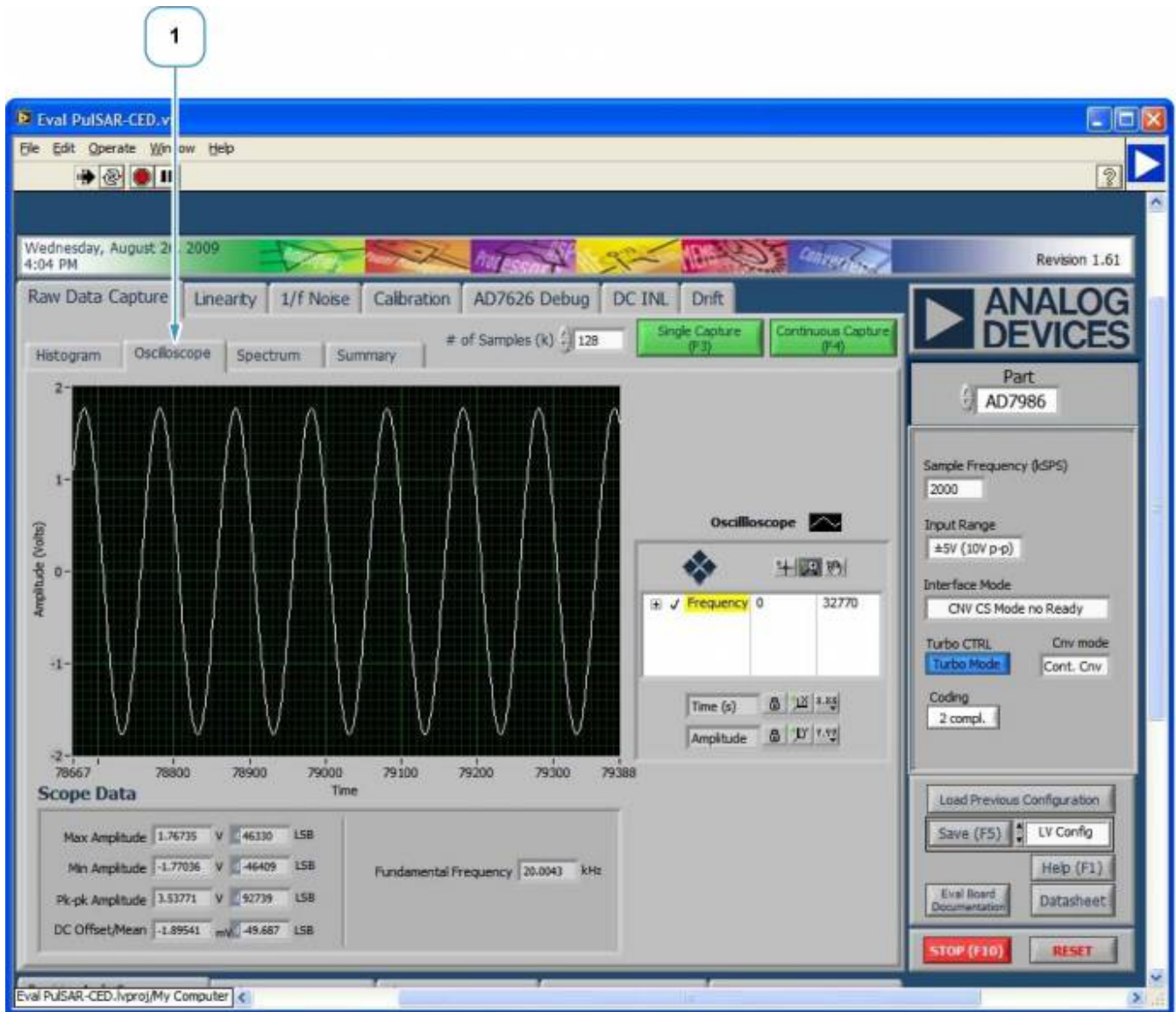


Figure 22. FFT Spectrum

## Troubleshooting

### Software Tips

- Always install the software from the CD or the Analog Devices website prior to connecting hardware



to the PC.

- Always allow the install to fully complete (the software is a two part install: the ADC software and the drivers). The install may require a restart of the PC.
- When you first plug in the board via the USB cable, allow the New Found Hardware Wizard to run completely. Though this may take some time, it is required prior to starting the software.
- Where the board does not appear to be functioning, ensure the following: that the ADC evaluation board is connected to the CED board, the daughter card is connected, and the board is being recognized in the Device Manager, as described in the Troubleshooting the Install section.

## Hardware Tips

If the software does not read any data back, take the following steps:

1. Check that power is applied to the CED board and that the voltages are present on the P connectors as described in Table 3.
2. Confirm the signal source is applied and outputting the expected signal.
3. Probe different points in the signal path to ensure that the applied signal is present at the input of both the driver amplifiers and the ADC.

If there are issues getting SNR performance, note the following:

- Some signal sources may require a filter in series to achieve performance. The SNR measurements for this board were tested with the AP-2322 signal source. This is a high performance audio analyzer and source.
- To achieve best SNR performance, ensure that the signal amplitude is sufficient to deliver a full-scale input range to the ADC. Monitor the maximum and minimum amplitude or fundamental amplitude in the Spectrum tab. Ideally, the fundamental should provide a full-scale swing; therefore, adjust the signal source output to cover the full-scale range.

## Design Support Package

### Schematics

[Evaluation board schematics](#)

### Gerber Files

[Evaluation board gerber files](#)



## Bill Of Materials

[BOM for AD7944/AD7985/AD7986](#)

## Software

Software compatible with CED evaluation board available [here](#).

## Related Links

Resource	Description
<a href="#">AD7944</a>	Product Page, AD7944, 14-bit 2.5 MSPS ADC with internal reference
<a href="#">AD7985</a>	Product Page, AD7985, 16-bit 2.5 MSPS ADC with internal reference
<a href="#">AD7986</a>	Product Page, AD7986, 18-bit 2 MSPS differential input ADC with internal reference
<a href="#">AD8021</a>	Product Page, AD8021, low noise, high speed amplifier
<a href="#">AD8032</a>	Product Page, AD8031/32, low power, low noise amplifier
<a href="#">ADA4899-1</a>	Product Page, ADA4899-1, low noise, high speed amplifier
<a href="#">ADR435</a>	Product Page, ADR435, unity-gain stable, ultralow distortion 1 nV/√Hz, high speed op-amp
<a href="#">ADP1715</a>	Product Page, high accuracy low IQ, 500 mA, ANYCAP®, adjustable low dropout regulator
<a href="#">ADP3334</a>	Product Page, ADP3334, 500 mA low dropout CMOS linear regulator with soft start
<a href="#">EVAL-CED1Z</a>	Product Page, converter and evaluation development board
<a href="#">AN-931</a>	Application Note, understanding PulSAR ADC support circuitry
<a href="#">AN-932</a>	Application Note, power supply sequencing

© Analog Devices, Inc. All rights reserved. Trademarks and registered trademarks are the property of their respective owners.



[www.analog.com](http://www.analog.com)