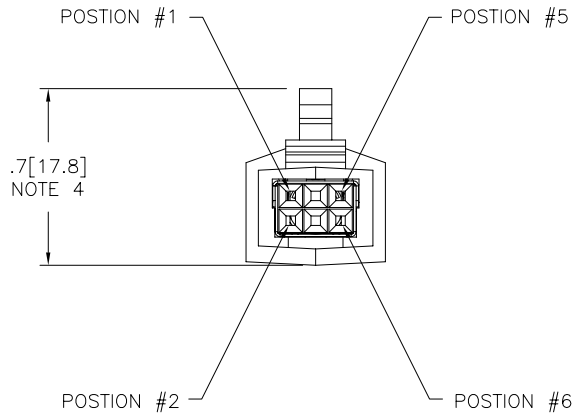
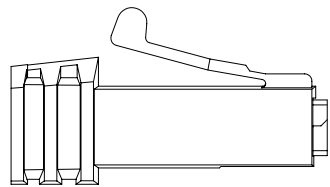
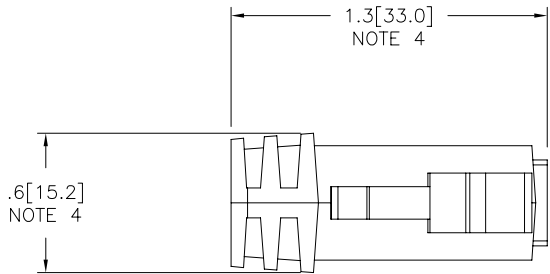


PRODUCT NUMBER
SEE SHT. 2



FCIconnect.com

Copyright FCI

mat'l. code				surface ISO 1302 <input checked="" type="checkbox"/>		tolerance ISO 406 ISO 1101		projection 		product family LATCH-N-LOK			
ltr	ecn no	dr	date	tolerances unless otherwise specified						title			
E	V91916	RGD	10/7/99	angles	linear	.XX±.01/.3	INCH/MM		2X3 LATCH-N-LOK 360° SHIELDED				
F	V92065	RGD	10/29/99			.xxx±.005/.13	scale 1:1		PLUG CONN. KIT W/O PV'S				
G	V01017	TFG	5/15/00	0'±2'		.xxx±.0020/.051			dwg no				
H	V01093	TFG	7/6/00	dr	M. HERNANDEZ	12/03/04			sheet 1 of 3		size		
J	M04-0229	MHT	12/03/04	enfr	M. BARRIOS	12/03/04			74902		A3		
K	M06-0285	AGS	7/28/06	chr	M. BARRIOS	12/03/04			type Product Customer Drawing				
L	M06-0365	AGS	9/20/06	appd	M. BARRIOS	12/03/04							
sheet index	revision	L	L	L									
	sheet	1	2	3									

form: A3

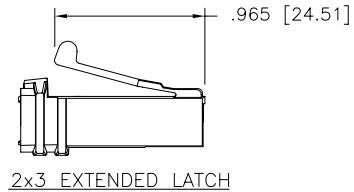
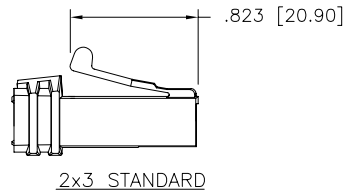
74902-6UVXLF

X EXTENDED LATCH OPTION

U	COLOR	
01	LT GRAY	OBS
02	OFF WHITE	
03	DK. GRAY	OBS
04	BLACK	
05	SLATE GRAY	OBS
07	SILVER GRAY	
08	PEARL WHITE	OBS
09	PEBBLE GRAY	

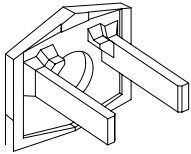
EXAMPLE

74902-607XLF: IS A 2X3 REAR EXIT PLUG IN SILVER GRAY WITH A CABLE EXIT HOLE SIZE OF .250[6.35] CABLE RANGE , ALSO WITH THE EXTENDED LATCH OPTION.

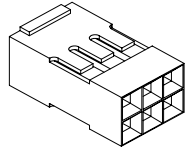


Copyright FCI

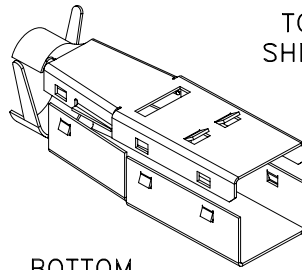
mat'l. code		surface ISO 1302 ✓		tolerance ISO 406 ISO 1101		projection ⊕		product family LATCH-N-LOK	
ltr		ecn no dr		date		tolerances unless otherwise specified		title	
L						.XX±.01/.3 linear .xxx±.005/.13 .xxxx±.0020/.051		2X3 LATCH-N-LOK 360° SHIELDED PLUG CONN. KIT W/O PV'S	
						0'±2'		INCH/MM scale 1:1	
				dr M. HERNANDEZ 12/03/04				dwg no sheet 2 of 3 size	
				enfr M. BARRIOS 12/03/04				74902 A3	
				chr M. BARRIOS 12/03/04				type Product Customer Drawing	
				appd M. BARRIOS 12/03/04					
sheet index		revision sheet							



REAR CAP

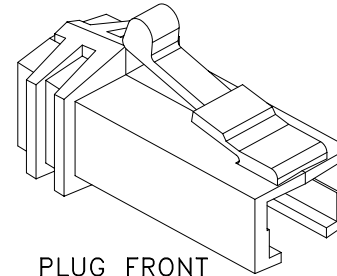


MINI LATCH HOUSING



TOP SHIELD

BOTTOM SHIELD



PLUG FRONT

NOTES:

1. EACH KIT CONTAINS ONE EACH OF THE FOLLOWING COMPONENTS
LATCH-N-LOK PLUG
LATCH-N-LOK END CAP
MINI LATCH HOUSING
360° SHIELD CANS.
2. COMPONENTS ARE BULK PACKAGED WITH 100 pcs. OF A COMPONENT PER BAG. PVC'S MUST BE ORDERED SEPARATELY.
3. MATERIALS USED: PLUGS AND CAPS ARE MOLDED IN POLYCARBONATE. THE MINI LATCH HOUSING ARE MOLDED IN NYLON. COLOR IS BLACK. THE SHIELD CAN IS 3/4 HARD BRASS PLATED WITH 2.5um MIN. BRIGHT TIN. 1.0um MIN. NICKEL UNDERPLATE.
- ④ DIMENSIONS ARE APPROXIMATE AND REFLECT PLUG IN UNLATCHED STATE.
5. PART NUMBERS WITH LF IN THE END ARE LEAD FREE.
6. THIS PRODUCT MEETS EUROPEAN UNION DIRECTIVES AND OTHER COUNTRY REGULATION AS DESCRIBED IN GS-22-008.



FCIconnect.com

Copyright FCI

mat'l. code		surface ISO 1302 ✓		tolerance ISO 406 ISO 1101		projection ⊕		product family LATCH-N-LOK	
ltr	ecn	no	dr	date	tolerances unless otherwise specified		INCH/MM	title	
L					angles	.XX±.01/.3		2X3 LATCH-N-LOK 360 SHIELDED PLUG CONN. KIT W/O PV'S	
					0°±2'	linear .xxx±.005/.13	scale 1:1	dwg no	
						.xxx±.0020/.051		sheet 3 of 3 size	
					dr	M. HERNANDEZ 12/03/04		74902 A3	
					enfr	M. BARRIOS 12/03/04		type Product Customer Drawing	
					chr	M. BARRIOS 12/03/04			
					appd	M. BARRIOS 12/03/04			
sheet index	revision sheet								