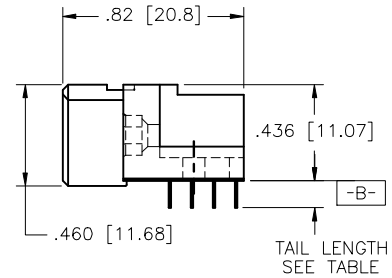
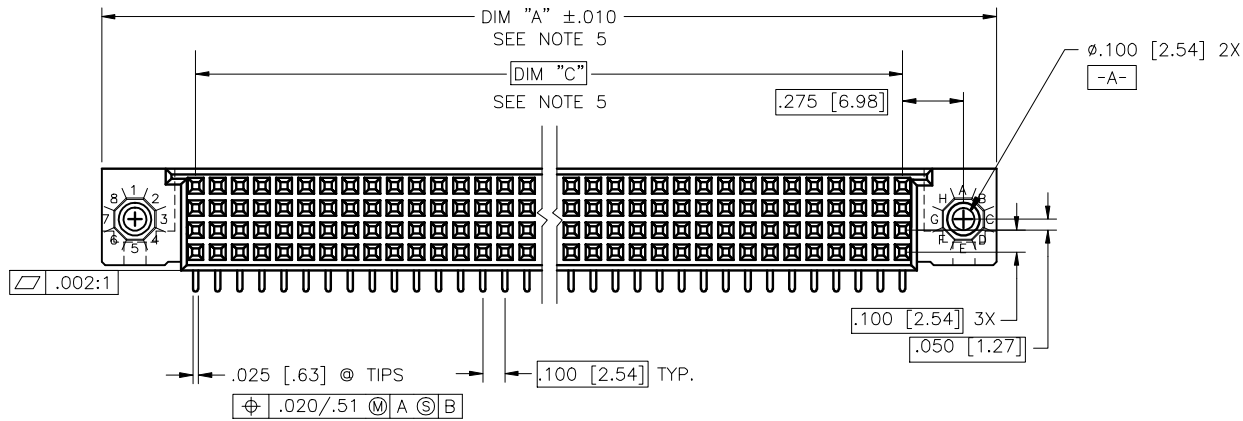
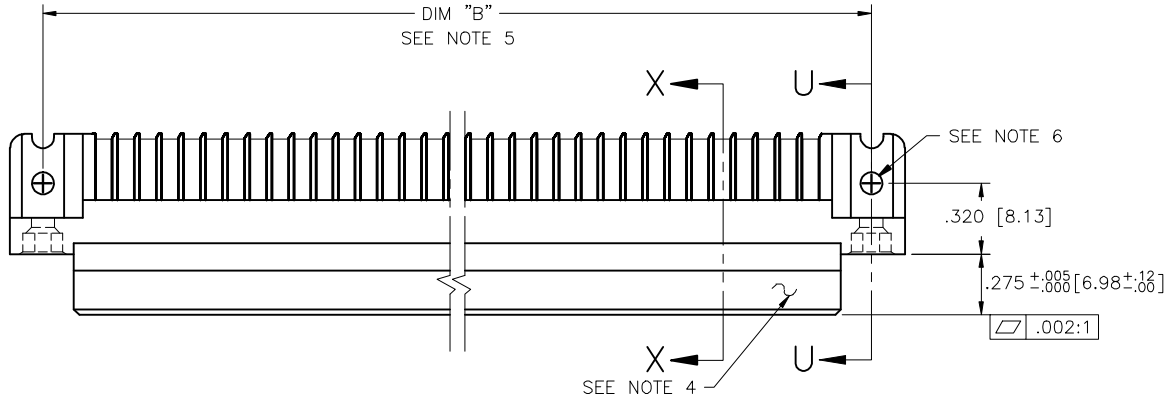


PRODUCT NUMBER  
SEE TABLE



mat'l. code				surface	tolerance	projection	product family
NOTE 3				ISO 1302	ISO 406	ISO 1501	HPC
ltr	ecn no	dr	date	tolerances unless otherwise specified		INCH/MM	title
K	V01354	LSS	6/22/00	angles	.XX±.01/XX±0.3		
L	V03-0489	HTB	5/2/03	linear	.XXX±.006/XXX±0.13	scale 1:1	4 ROW R/A RECEPTACLE
M	V05-0207	VS	3/2/05	0'±2'	.XXXX±.0020/XXXX±0.051		SOLDER TAIL, 0 GUIDE PIN
N	V05-1052	HTB	12/7/05	dr	G.PETERS	6/4/96	dwg no
P	M06-0283	MHT	7/27/06	engr	S.CLARK	6/3/96	sheet 1 of 5
R	M07-0099	AGS	2/09/07	chr	S.CLARK	6/4/96	size
S	M08-0280	AGS	9/30/08	appd	S.CLARK	6/4/96	A3
sheet	revision	S	S	S	S	S	type
index	sheet	1	2	3	4	5	Product Customer Drawing

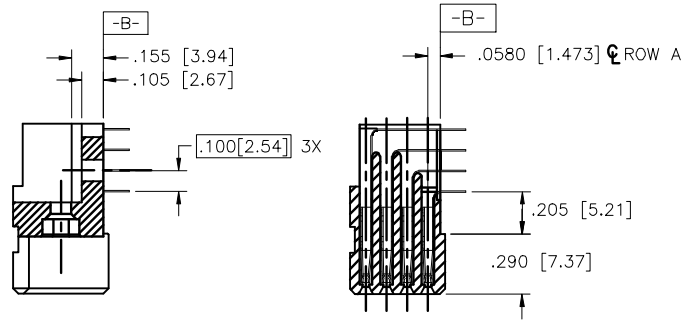


Copyright FCI

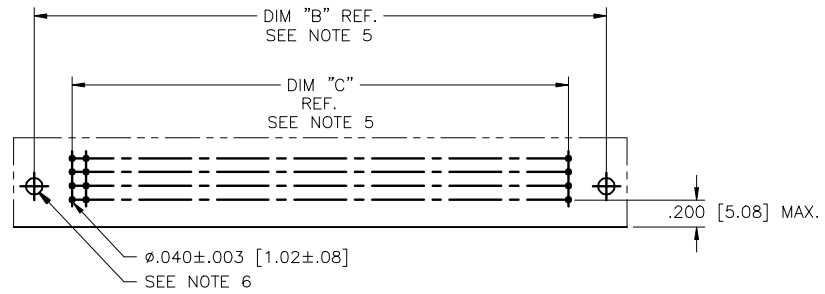
PRODUCT NUMBER  
SEE TABLE

NOTES:

- ① PRODUCT NUMBERING CODE:  
50295 - X YYY Z S LF  
  - LEAD FREE (OPTIONAL)
  - SPECIAL FEATURES (NOTE 6)
  - TAIL LENGTH (SEE TABLE)
  - NO. OF POSITIONS (NOTE 2)
  - PLATING (SEE TABLE)
  - BASE NUMBER
- ② THIS PRODUCT IS CONFIGURED IN SIZES OF 6 thru 80 COLUMNS IN INCREMENTS OF ONE.  
i.e.: 6,7,8,9.....79,80.
- ③ HOUSING MATERIAL: GLASS & MINERAL FILLED HIGH-TEMP THERMOPLASTIC, FLAME RETARDANT PER UL94 V-0.  
CONTACT MATERIAL: BeCu
- ④ MANUFACTURE'S NAME, PART NUMBER AND LOT CODE TO APPEAR ON THIS SURFACE PER BUS-12-108.
- ⑤ LENGTH DIMENSION FORMULAS:  
DIM "A" =  $.100/2.54 \times \text{NO. OF COLUMNS} + .75/19.1$   
DIM "B" =  $.100/2.54 \times \text{NO. OF COLUMNS} + .450/11.43$   
DIM "C" =  $.100/2.54 \times \text{NO. OF COLUMNS} - .100/2.54$
- ⑥ SPECIAL FEATURES (SEE SHEET 3) AND TABLE.  
 - = IF CODE IS OMITTED FROM PRODUCT NUMBER: CONNECTOR IS PROVIDED AS SHOWN, NO SPECIAL FEATURES ARE SELECTED. FOR P.C.B. ATTACHEMENT IN A  $\phi.120[3.05]$  MOUNTING HOLE.  
 "A" = IF SPECIFIED, PRE-INSTALLED CLAW FOR P.C.B. ATTACHMENT IN A  $\phi.100[2.54]$  MOUNTING HOLE. AVAILABLE IN "E" TAIL LENGTH ONLY.  
 "B" = IF SPECIFIED, PRE-INSTALLED CLAW FOR P.C.B. ATTACHMENT IN A  $\phi.120[3.05]$  MOUNTING HOLE.  
 "C" = IF SPECIFIED, MOLDED GUIDE PINS WITH PRE-INSTALLED CLAW FOR P.C.B. ATTACHMENT IN A  $\phi.120[3.05]$  MOUNTING HOLE.  
 "D" = IF SPECIFIED, MOLDED GUIDE PINS WITH  $\phi.100[2.54]$  MOUNTING HOLE (NO CLAW).
- ⑦ CLAW DIMENSION DETERMINED BY P.C.B. HOLE DIAMETER.
8. THIS PRODUCT (WITH "LF" SUFFIX) MEETS EUROPEAN UNION DIRECTIVES AND OTHER COUNTRY REGULATIONS AS DESCRIBED IN GS-22-008.
9. THIS HOUSING WILL WITHSTAND EXPOSURE TO 260 DEGREES C PEAK TEMPERATURE FOR 10-30 SECONDS IN A CONVECTION, INFRA-RED OR VAPOR PHASE REFLOW OVEN.
- ⑩ PLATING OPTION:  
MAY BE EITHER GOLD OR GXT PLATED AT MANUFACTURER'S OPTION.



SECTION U-U NO SPECIAL FEATURE  
SECTION X-X



RECOMMENDED PCB LAYOUT  
(ALL HOLES LOCATED ON .100 [2.54] GRID UNLESS OTHERWISE SPECIFIED)

mal't. code		NOTE 3		surface	ISO 1902	tolerance	ISO 406 ISO 1101	projection	product family	HPC	
ltr	ecn no	dr	date	tolerances unless otherwise specified				INCH/MM	title		
S				angles	linear	.XX±.01/XX±0.3	4 ROW R/A RECEPTACLE				
				0'±2'		.XXX±.006/XX±0.13	SOLDER TAIL, 0 GUIDE PIN				
						.XXX±.0020/XXX±0.051	scale	1:1	dwg no	sheet 2 of 5	
				dr	G.PETERS	6/4/96			size	A3	
				engr	S.CLARK	6/3/96			50295		
				chr	S.CLARK	6/4/96					
				appd	S.CLARK	6/4/96					
sheet	revision		type								Product Customer Drawing
index	sheet										

Copyright FCJ  
 FCJconnect.com

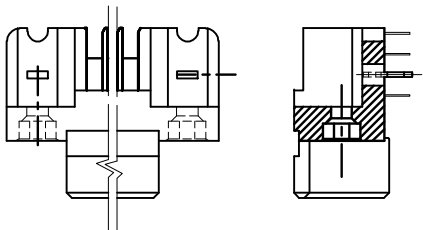


Copyright FCJ

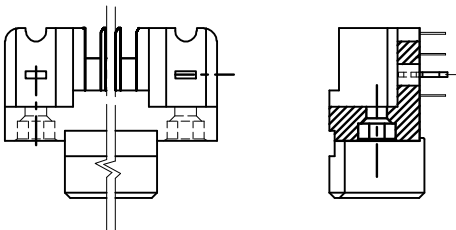
PRODUCT NUMBER  
SEE TABLE

SPECIAL FEATURE OPTION A

SPECIAL FEATURE OPTION B



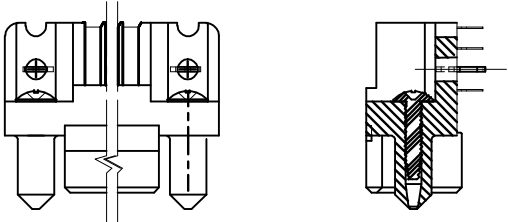
SECTION U-U



SECTION U-U

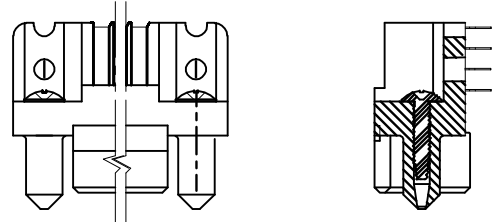
SPECIAL FEATURE OPTION C

SPECIAL FEATURE OPTION D



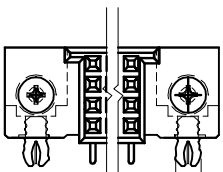
SECTION U-U

SELF TAPPING SCREW (2x)



SECTION U-U

SELF TAPPING SCREW (2x)



NOTE 7

mat'l. code				surface	tolerance	projection	product family
NOTE 3				ISO 1302	ISO 406		HPC
ltr	ecn no	dr	date	tolerances unless otherwise specified			INCH/MM
S				angles	.XX±.01/XX±0.3		4 ROW R/A RECEPTACLE
				linear	.XXX±.006/XXX±0.13		SOLDER TAIL, 0 GUIDE PIN
				0°±2'	.XXX±.0020/XXX±0.051		scale 1:1
				dr	G.PETERS	6/4/96	dwg no
				engr	S.CLARK	6/3/96	sheet 3 of 5
				chr	S.CLARK	6/4/96	size
				appd	S.CLARK	6/4/96	A3
sheet	revision						type
index	sheet						Product Customer Drawing

form A3 1 2 3 4 5 6

PRODUCT NUMBER NOTE 1 AND 2	NUMBER OF POSITIONS SEE NOTE 2	TAIL LENGTH ±.010/0.25	SPECIAL FEATURES SEE NOTE 6	TAIL PLATING	CONTACT PLATING SEE NOTE 10	PRODUCT NUMBER NOTE 1 AND 2	NUMBER OF POSITIONS SEE NOTE 2	TAIL LENGTH ±.010/0.25	SPECIAL FEATURES SEE NOTE 6	TAIL PLATING	CONTACT PLATING SEE NOTE 10
50295-1YYYE	YYY	.125/3.18	NONE	TIN-LEAD	30µ"/0.76µ Au	50295-1YYYELF	YYY	.125/3.18	NONE	TIN	30µ"/0.76µ Au
50295-1YYYEA	YYY	.125/3.18	"A"		30µ"/0.76µ Au	50295-1YYYEALF	YYY	.125/3.18	"A"		30µ"/0.76µ Au
50295-1YYYEB	YYY	.125/3.18	"B"		30µ"/0.76µ Au	50295-1YYYEBLF	YYY	.125/3.18	"B"		30µ"/0.76µ Au
50295-1YYYEC	YYY	.125/3.18	"C"		30µ"/0.76µ Au	50295-1YYYECLF	YYY	.125/3.18	"C"		30µ"/0.76µ Au
50295-1YYYED	YYY	.125/3.18	"D"		30µ"/0.76µ Au	50295-1YYYEDLF	YYY	.125/3.18	"D"		30µ"/0.76µ Au
50295-1YYYF	YYY	.145/3.68	NONE		30µ"/0.76µ Au	50295-1YYYFLF	YYY	.145/3.68	NONE		30µ"/0.76µ Au
50295-1YYYFB	YYY	.145/3.68	"B"		30µ"/0.76µ Au	50295-1YYYFBLF	YYY	.145/3.68	"B"		30µ"/0.76µ Au
50295-1YYYFC	YYY	.145/3.68	"C"		30µ"/0.76µ Au	50295-1YYYFCLF	YYY	.145/3.68	"C"		30µ"/0.76µ Au
50295-1YYYFD	YYY	.145/3.68	"D"		30µ"/0.76µ Au	50295-1YYYFDLF	YYY	.145/3.68	"D"		30µ"/0.76µ Au
50295-1YYYH	YYY	.180/4.57	NONE		30µ"/0.76µ Au	50295-1YYYHLF	YYY	.180/4.57	NONE		30µ"/0.76µ Au
50295-1YYYHB	YYY	.180/4.57	"B"		30µ"/0.76µ Au	50295-1YYYHBLF	YYY	.180/4.57	"B"		30µ"/0.76µ Au
50295-1YYYHC	YYY	.180/4.57	"C"		30µ"/0.76µ Au	50295-1YYYHCLF	YYY	.180/4.57	"C"		30µ"/0.76µ Au
50295-1YYYHD	YYY	.180/4.57	"D"		30µ"/0.76µ Au	50295-1YYYHDLF	YYY	.180/4.57	"D"		30µ"/0.76µ Au
50295-3YYYE	YYY	.125/3.18	NONE		50µ"/1.27µ Au	50295-3YYYELF	YYY	.125/3.18	NONE		50µ"/1.27µ Au
50295-3YYYEA	YYY	.125/3.18	"A"		50µ"/1.27µ Au	50295-3YYYEALF	YYY	.125/3.18	"A"		50µ"/1.27µ Au
50295-3YYYEB	YYY	.125/3.18	"B"		50µ"/1.27µ Au	50295-3YYYEBLF	YYY	.125/3.18	"B"		50µ"/1.27µ Au
50295-3YYYEC	YYY	.125/3.18	"C"		50µ"/1.27µ Au	50295-3YYYECLF	YYY	.125/3.18	"C"		50µ"/1.27µ Au
50295-3YYYED	YYY	.125/3.18	"D"		50µ"/1.27µ Au	50295-3YYYEDLF	YYY	.125/3.18	"D"		50µ"/1.27µ Au
50295-3YYYF	YYY	.145/3.68	NONE		50µ"/1.27µ Au	50295-3YYYFLF	YYY	.145/3.68	NONE		50µ"/1.27µ Au
50295-3YYYFB	YYY	.145/3.68	"B"		50µ"/1.27µ Au	50295-3YYYFBLF	YYY	.145/3.68	"B"		50µ"/1.27µ Au
50295-3YYYFC	YYY	.145/3.68	"C"		50µ"/1.27µ Au	50295-3YYYFCLF	YYY	.145/3.68	"C"		50µ"/1.27µ Au
50295-3YYYFD	YYY	.145/3.68	"D"		50µ"/1.27µ Au	50295-3YYYFDLF	YYY	.145/3.68	"D"		50µ"/1.27µ Au
50295-3YYYH	YYY	.180/4.57	NONE		50µ"/1.27µ Au	50295-3YYYHLF	YYY	.180/4.57	NONE		50µ"/1.27µ Au
50295-3YYYHB	YYY	.180/4.57	"B"		50µ"/1.27µ Au	50295-3YYYHBLF	YYY	.180/4.57	"B"		50µ"/1.27µ Au
50295-3YYYHC	YYY	.180/4.57	"C"		50µ"/1.27µ Au	50295-3YYYHCLF	YYY	.180/4.57	"C"		50µ"/1.27µ Au
50295-3YYYHD	YYY	.180/4.57	"D"	TIN-LEAD	50µ"/1.27µ Au	50295-3YYYHDLF	YYY	.180/4.57	"D"	TIN	50µ"/1.27µ Au

TABLE CONTINUED ON SHEET 5



Copyright FCI

mat'l. code				surface		tolerance		projection		product family	
NOTE 3				ISO 1302		ISO 406 ISO 1101				HPC	
ltr	ecn no	dr	date	tolerances unless otherwise specified						title	
S				linear		.XX±.01/XX±0.3 .XXX±.006/XXX±0.13 .XXXX±.0020/XXXX±0.051		INCH/MM		4 ROW R/A RECEPTACLE SOLDER TAIL, 0 GUIDE PIN	
				0'±2'				scale 1:1		dwg no	
				dr		G.PETERS 6/4/96				sheet 4 of 5 size	
				engr		S.CLARK 6/3/96				50295 A3	
				chr		S.CLARK 6/4/96					
				appd		S.CLARK 6/4/96				type Product Customer Drawing	
sheet	revision										
index	sheet										

form: A3 1 2 3 4 5 6

PRODUCT NUMBER NOTE 1 AND 2	NUMBER OF POSITIONS SEE NOTE 2	TAIL LENGTH ±.010/0.25	SPECIAL FEATURES SEE NOTE 6	TAIL PLATING	CONTACT PLATING SEE NOTE 10
50295-5YYYE	YYY	.125/3.18	NONE	TIN/LEAD	30μ"/0.76μ GXT
50295-5YYYELF	YYY	.125/3.18	NONE	TIN	
50295-5YYYEA	YYY	.125/3.18	"A"	TIN/LEAD	
50295-5YYYEALF	YYY	.125/3.18	"A"	TIN	
50295-5YYYEB	YYY	.125/3.18	"B"	TIN/LEAD	
50295-5YYYEBLF	YYY	.125/3.18	"B"	TIN	
50295-5YYYEC	YYY	.125/3.18	"C"	TIN/LEAD	
50295-5YYYECLF	YYY	.125/3.18	"C"	TIN	
50295-5YYYED	YYY	.125/3.18	"D"	TIN/LEAD	
50295-5YYYEDLF	YYY	.125/3.18	"D"	TIN	
50295-5YYYF	YYY	.145/3.68	NONE	TIN/LEAD	
50295-5YYYFLF	YYY	.145/3.68	NONE	TIN	
50295-5YYYFB	YYY	.145/3.68	"B"	TIN/LEAD	
50295-5YYYFBLF	YYY	.145/3.68	"B"	TIN	
50295-5YYYFC	YYY	.145/3.68	"C"	TIN/LEAD	
50295-5YYYFCLF	YYY	.145/3.68	"C"	TIN	
50295-5YYYFD	YYY	.145/3.68	"D"	TIN/LEAD	
50295-5YYYFDLF	YYY	.145/3.68	"D"	TIN	
50295-5YYYH	YYY	.180/4.57	NONE	TIN/LEAD	
50295-5YYYHLF	YYY	.180/4.57	NONE	TIN	
50295-5YYYHB	YYY	.180/4.57	"B"	TIN/LEAD	
50295-5YYYHBLF	YYY	.180/4.57	"B"	TIN	
50295-5YYYHC	YYY	.180/4.57	"C"	TIN/LEAD	
50295-5YYYHCLF	YYY	.180/4.57	"C"	TIN	
50295-5YYYHD	YYY	.180/4.57	"D"	TIN/LEAD	
50295-5YYYHDLF	YYY	.180/4.57	"D"	TIN	30μ"/0.76μ GXT



Copyright FCJ

mat'l. code		NOTE 3		surface	ISO 1902	tolerance	ISO 406	projection	product family	HPC
ltr	ecn no	dr	date	tolerances unless otherwise specified						
s				angles	linear	.XX±.01/XX±0.3	.XXX±.006/XXX±0.13	INCH/MM	title	
				0'±2'		.XXX±.0020/XXX±0.051		scale	4 ROW R/A RECEPTACLE	
				dr	G.PETERS	6/4/96			SOLDER TAIL, 0 GUIDE PIN	
				engr	S.CLARK	6/3/96			dwg no	sheet 5 of 5
				chr	S.CLARK	6/4/96			50295	A3
				appd	S.CLARK	6/4/96			type Product Customer Drawing	
sheet	revision									
index	sheet									