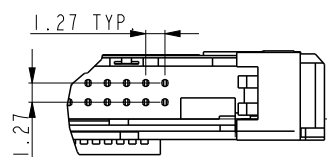
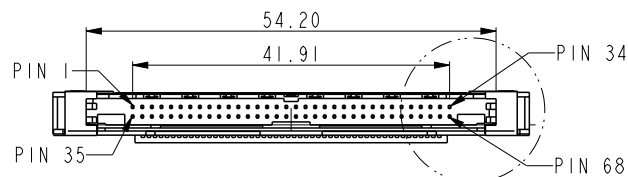
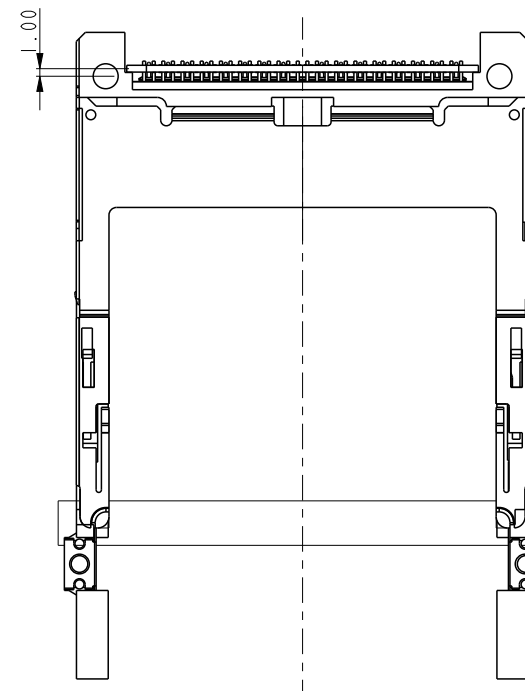
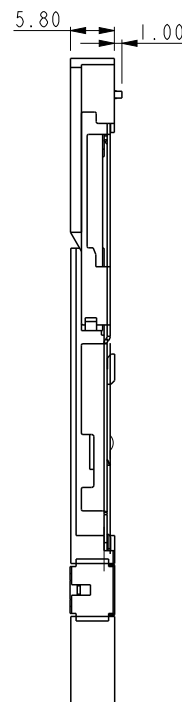
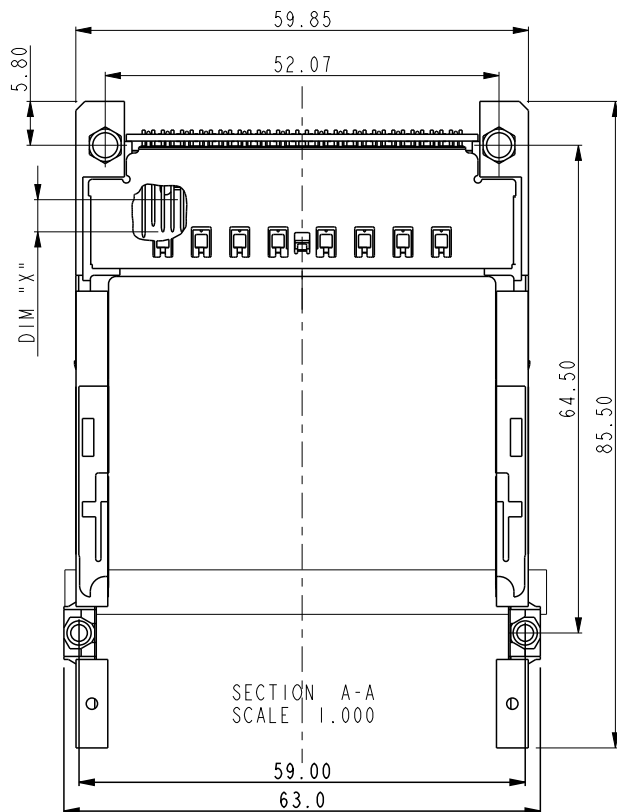


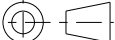




Copyright FCI.

PRODUCT NUMBER  
10116129-0001LF



DETAIL A  
SCALE 2.000

dr	Su-Hua Miao	2010/11/15	projection 	MM 	size	A4	scale	1.000					
eng	Su-Hua Miao	2012/05/16			ecn no	ELX-N-011498-1							
chr	-	-			rel level			Released					
appr	Rick Bian	2012/05/16	product family			-							
		title			CARDBUS SINGLE DECK			dwg no	10116129	rev	B		
www.fci.com		cat. no.			-			Product - Customer Drw			sheet 1 of 2		

PRODUCT NUMBER	STAND OFF	HEADER ASS'Y	MECHANISM ASS'Y	MOUNTING STYLE TO PCB
10116129-0001LF	0.0	10116132-0200LF	72304-000	TOP

## RECOMMEND P.C.B. LAYOUT

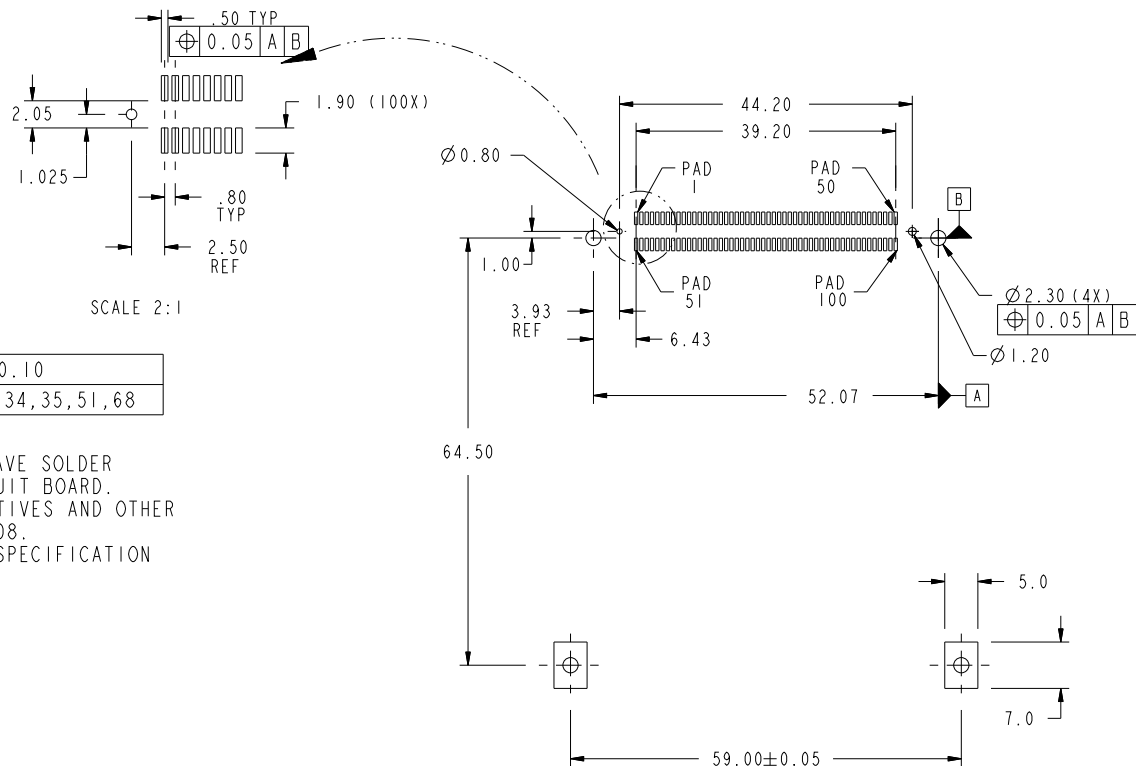
TOLERANCE:  $\pm 0.05$

### NOTE:

- MATERIAL
  - HEADER ASS'Y  
HOUSING: LCP UL94V-0 BLACK  
TERMINAL: COPPER ALLOY
  - PCB: FR4
- PLATING  
UNDER PLATING: 1.27  $\mu$ m MIN. Ni  
CONTACT AREA: 0.076  $\mu$ m MIN. Au  
SOLDER TAIL: 2.5  $\mu$ m MIN. MATTE TIN
- DIM "X"

LENGTH (mm)	4.25 $\pm$ 0.10	3.5 $\pm$ 0.10	5.0 $\pm$ 0.10
PIN NUMBER	OTHERS	36,67	1,17,34,35,51,68

- THE HOUSING WILL WITHSTAND EXPOSURE TO 260° PEAK TEMPERATURE FOR 10 SECONDS IN A WAVE SOLDER APPLICATION WITH A 1.00mm MINIMUM THICK CIRCUIT BOARD.
- LEAD FREE PRODUCT MEETS EUROPEAN UNION DIRECTIVES AND OTHER COUNTRY REGULATIONS AS DISCRIBLED IN GS-22-008.
- IF LEAD FREE P/N. PACKAGING MEETS GS-14-920 SPECIFICATION
- MATED BOARD CONNECTOR P/N: 73277-101402LF.
- PRODUCT SPEC: 110-263
- PACKAGE SPEC: GS-14-341



spec ref				dr		Su-Hua Miao	2010/11/15		projection		MM		size		A4		scale		1.000														
tolerance std		TOLERANCES UNLESS OTHERWISE SPECIFIED				eng		Su-Hua Miao		2012/05/16						ecn no						ELX-N-011498-1											
						chr		-		-																							
						appr		Rick Bian		2012/05/16						product family						-		rel level		Released							
surface		linear		0.X		±0.3				title						CARDBUS SINGLE DECK						dwg no		10116129						rev		B	
				0.XX		±0.15																											
				0.XXX		±0.08																											
		angular		0°		±2°		www.fci.com		cat. no.		-		Product - Customer Drw						sheet 2 of 2													

REV E F12006-04007 C - 2009-06-09