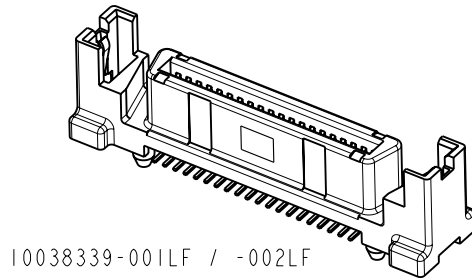
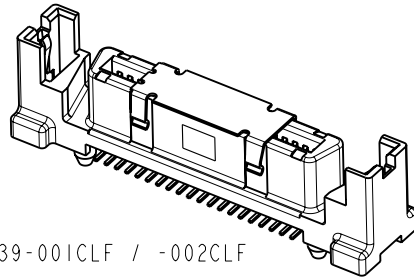


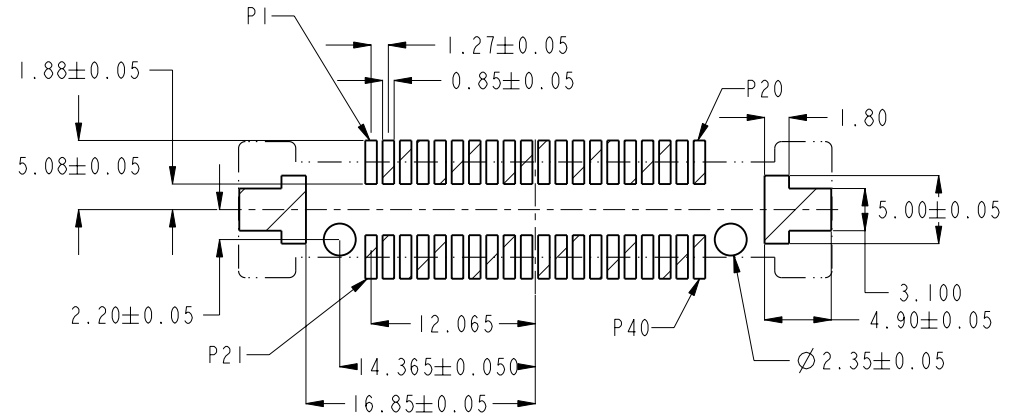
| PRODUCT NO      | REMARKS             |
|-----------------|---------------------|
| 10038339-001LF  | WITHOUT PICK-UP CAP |
| 10038339-001CLF | WITH PICK-UP CAP    |
| 10038339-002LF  | WITHOUT PICK-UP CAP |
| 10038339-002CLF | WITH PICK-UP CAP    |



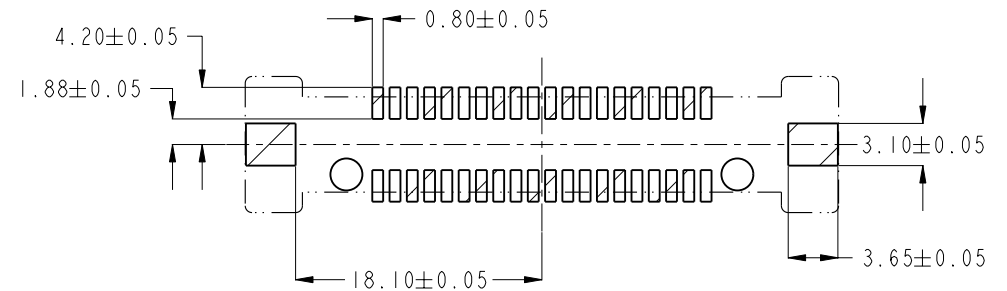
10038339-001LF / -002LF



10038339-001CLF / -002CLF



RECOMMENDED PCB LAYOUT FOR 10038339-001LF & -001CLF



RECOMMENDED PCB LAYOUT FOR 10038339-002LF & -002CLF

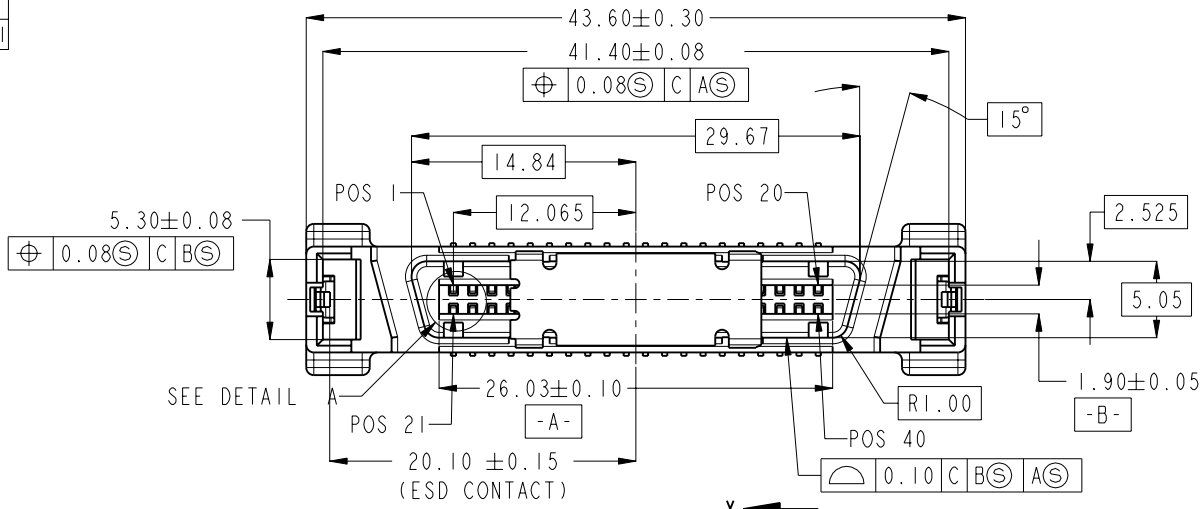
NOTES:

- MATERIAL :  
HOUSING : HIGH TEMPERATURE THERMOPLASTIC  
CONTACTS : COPPER ALLOY  
ESD CONTACTS : COPPER ALLOY
- PLATING :  
CONTACTS : 1.27um/50u" MIN NICKEL UNDERPLATE  
0.76um/30u" MIN GOLD AT CONTACT AREA  
2.54um/100u" MIN TIN AT SOLDER TAIL  
ESD CONTACTS : 1.27um/50u" MIN NICKEL UNDERPLATE  
2.54um/100u" MIN TIN AT OVERALL
- THE HOUSING WILL WITHSTAND EXPOSURE TO 260°C PEAK TEMPERATURE FOR 10 SECONDS IN A CONVECTION, INFRA-RED OR VAPOR PHASE REFLOW OVEN.
- THIS PRODUCT MEETS EUROPEAN UNION DIRECTIVES AND OTHER COUNTRY REGULATIONS AS DESCRIBED ON GS-22-008.

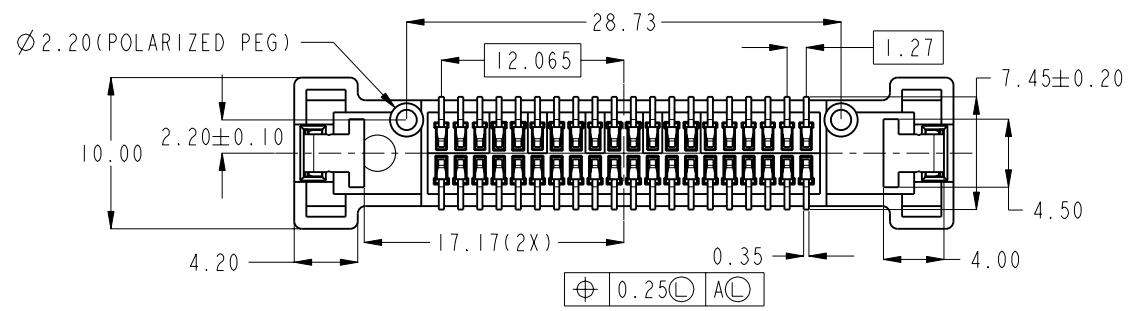
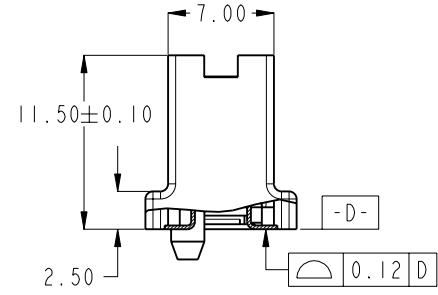
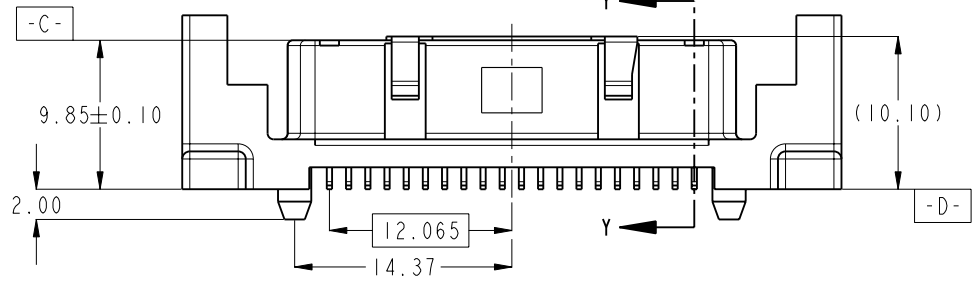
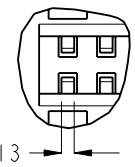
| rev | ecn no   | dr     | date       |
|-----|----------|--------|------------|
| A   | S05-0136 | TAY    | 2005-05-11 |
| B   | S05-0216 | TAY    | 2005-08-01 |
| C   | S05-0275 | TAY    | 2005-09-22 |
| D   | S07-0042 | TAY    | 2007-02-07 |
| E   | S10-0071 | TAY/KP | 2010-03-30 |
| -   | -        | -      | -          |
| -   | -        | -      | -          |

|                    |  |  |                                       |   |                  |            |              |              |
|--------------------|--|--|---------------------------------------|---|------------------|------------|--------------|--------------|
| www.fciconnect.com |  |  | surface<br>ASME Y14.5                 | <input checked="" type="checkbox"/> tolerance std<br>ASME Y14.5 | projection<br>MM | size<br>A4 |              | Scale<br>2:1 |
| Dr KP TAY          |  |  | TOLERANCES UNLESS OTHERWISE SPECIFIED |   | size<br>A4       |            | ECN S10-0071 |              |
| Eng KP TAY         |  |  | ANGULAR                               | LINEAR  | 0.X              | ±0.35      | Spec ref -   |              |
| Chr KP TAY         |  |  | 0°                                    | ±2°   | 0.XX             | ±0.25      | -            |              |
| Appr JOEY NG       |  |  | Product family                        |   | 0.XXX            | ±0.13      | -            |              |
| FCI                |  |  | SCA-2 & FIBER CHANNEL                 |   |                  | 10038339   |              | Rev.<br>E    |
| RECEPT, SMT        |  |  | catalog no                            |   |                  | CUSTOMER   |              | sheet 1 of 2 |

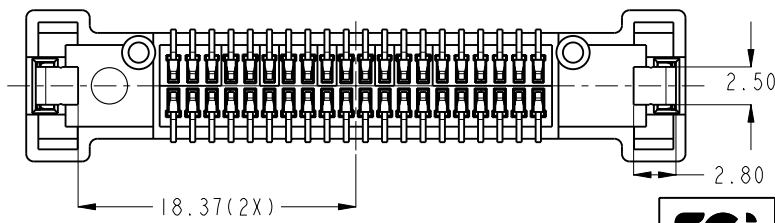
PRODUCT NO  
REFER TO PAGE I



DETAIL A  
SCALE 4:1



10038339-001LF / -001CLF



10038339-002LF / -002CLF



Copyright FCI.



10038339-001LF / -001CLF  
10038339-002LF / -002CLF

|   |                            |                     |
|---|----------------------------|---------------------|
| <p>FCI<br/>TITLE<br/>SCA-2 &amp; FIBER CHANNEL<br/>RECEPT, SMT<br/>catalog no</p> | <p>dwg no<br/>10038339</p> | <p>Rev.<br/>E</p>   |
| <p>CUSTOMER</p>   |                            | <p>sheet 2 of 2</p> |