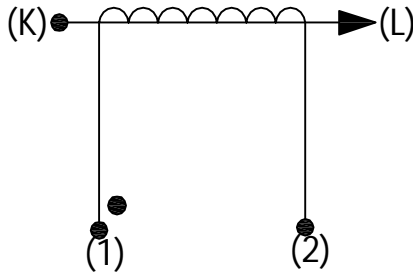


Product Type	Current Transformer
AMGIS Part Number	#U
Customer Part Number	
Place of Manufacture	

SCHEMATIC:



ELECTRICAL SPECIFICATION:

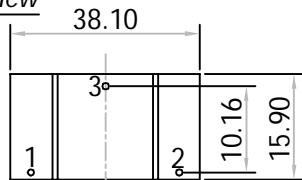
Rated input current = 75Amps
 Primary to Secondary isolation = 2500VAC
 Operating Frequency = 50 / 60 Hz
 Turns Ratio = 1 : 1000
 DC Resistance = 24.00 Ω
 Output Voltage = 7.5V @ 75A / 100 Ω , 0.5700W
 I_o @ V_{rms} : 9.26V = 1520 μ Arms
 Ratio Correction factor (RCF*) = 1.001@10% (Multiply current reading by this factor to compensate for transformer losses)

100 Ω	500 Ω	2000 Ω	5000 Ω
0.10	0.39	0.57	0.65

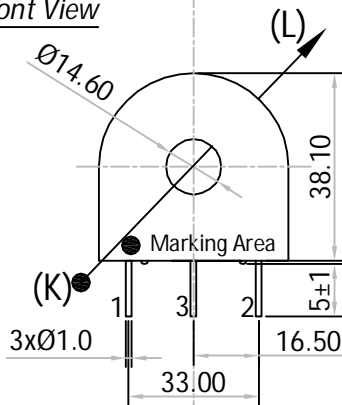
MECHANICAL SPECIFICATION :

OUTPUT RESPONSE vs INPUT CURRENT @ RATED BURDEN :

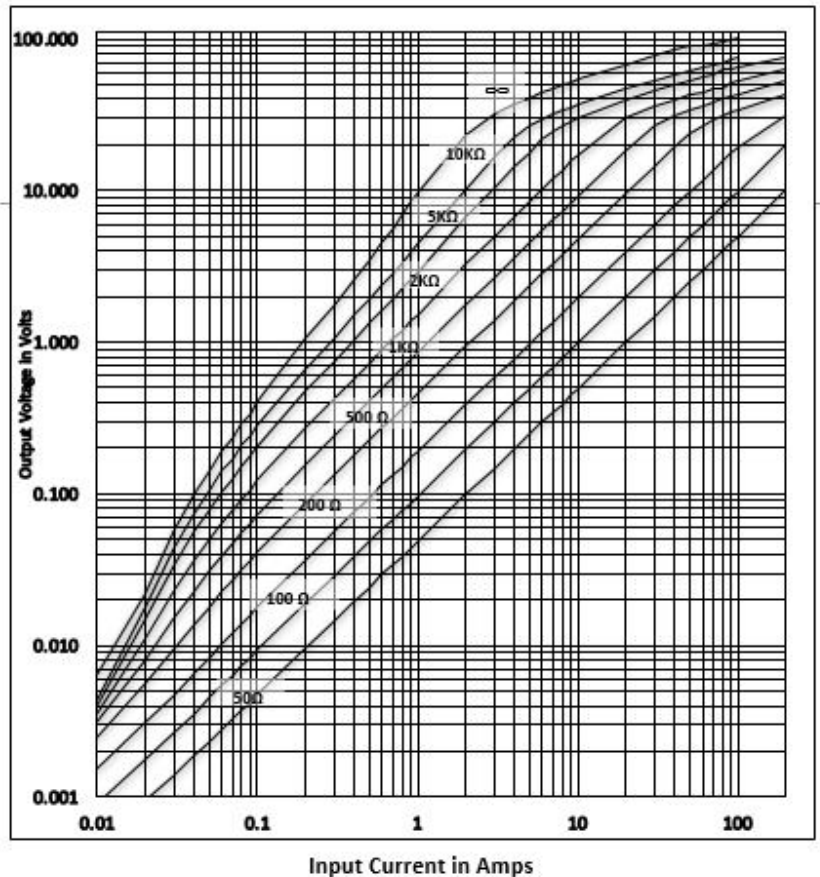
Pin Side View



Front View

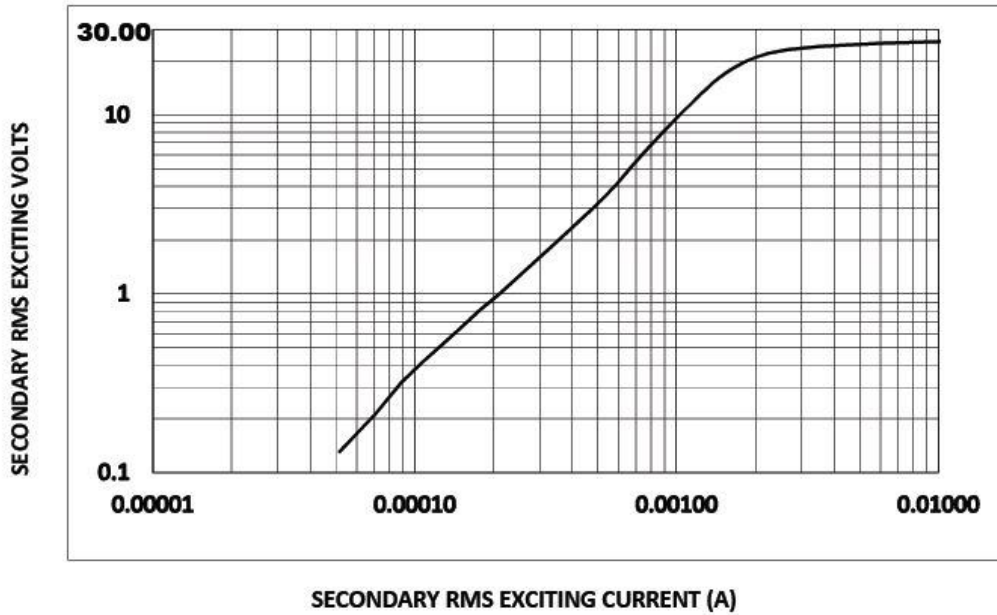


All dimensions are in mm
 Linear dimensional tolerance ± 0.2 mm

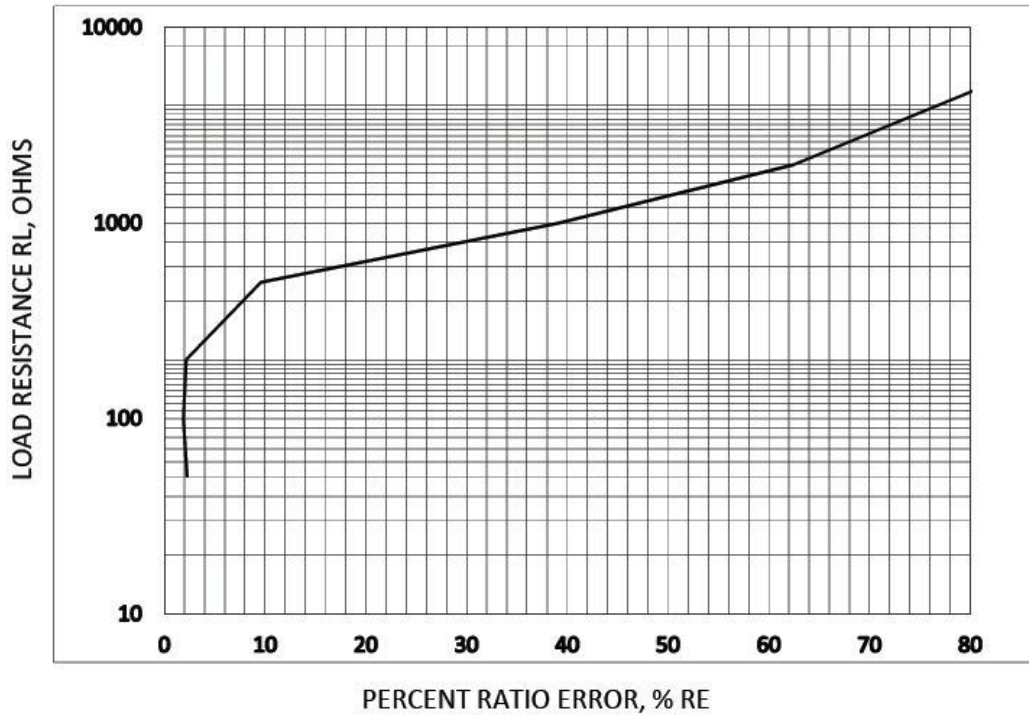


Note : Un-Used pin \rightarrow #3

TYPICAL EXCITATION CURVE :



RATIO ERROR (%) vs RATED BURDEN @ INPUT CURRENT :



TRAFO WEIGHT:

Approx. Weight = 0.0652 kg / pc

MARKING INFORMATION:

L01-6219
 Ac yr / wk code
 ●
 Dot mark for Start pin identification

-----Initial Issue-----	1	0	Balaji. R	18-Nov'2015
Changes	Issue	Rev	Initial	Date