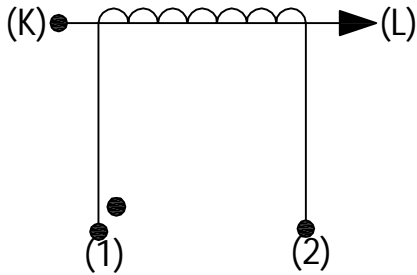


Product Type	Current Transformer
AMGIS Part Number	#u
Customer Part Number	
Place of Manufacture	

SCHEMATIC:



ELECTRICAL SPECIFICATION:

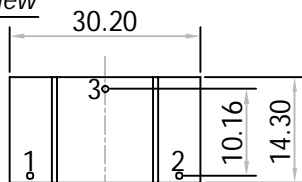
Rated input current = 25Amps  
 Primary to Secondary isolation = 2500VAC  
 Operating Frequency = 50 / 60 Hz  
 Turns Ratio = 1 : 1000  
 DC Resistance = 48.00 Ω  
 Output Voltage = 2.5V @ 25A / 100Ω, 0.0630W  
 I<sub>o</sub> @ V<sub>rms</sub> : 3.65V = 566μArms  
 Ratio Correction factor (RCF\*) = 1.02 @ 10% (Multiply current reading by this factor to compensate for transformer losses)

Volt/Amp at rated I <sub>p</sub> for different loads			
100Ω	500Ω	2000Ω	5000Ω
0.10	0.47	1.06	1.31

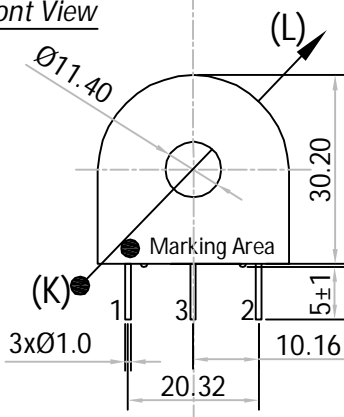
MECHANICAL SPECIFICATION:

OUTPUT RESPONSE vs INPUT CURRENT @ RATED BURDEN :

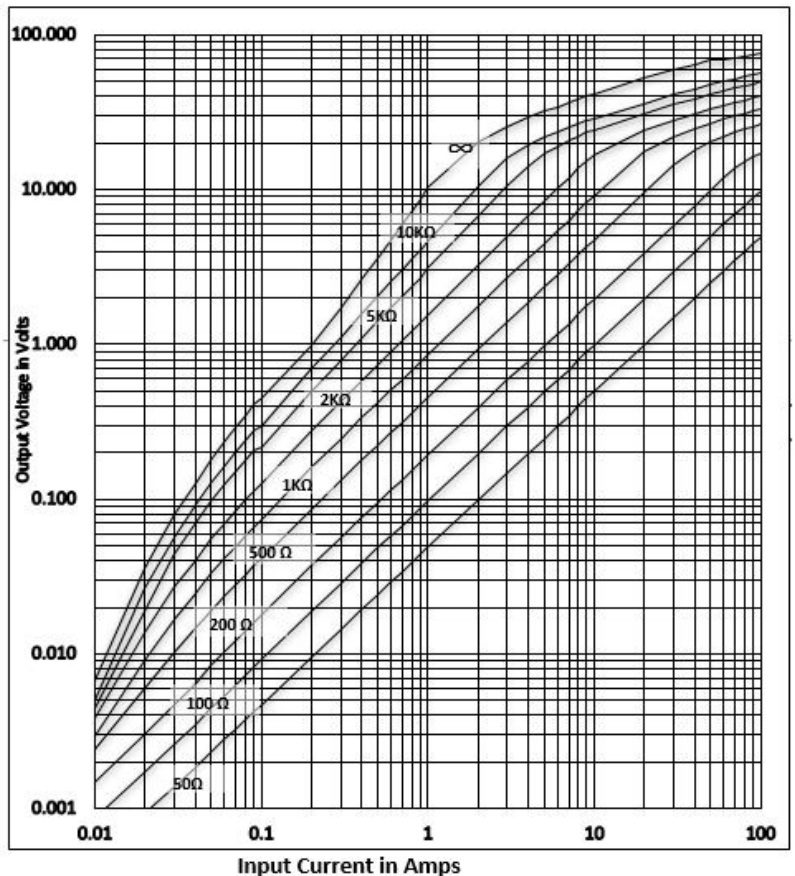
Pin Side View



Front View

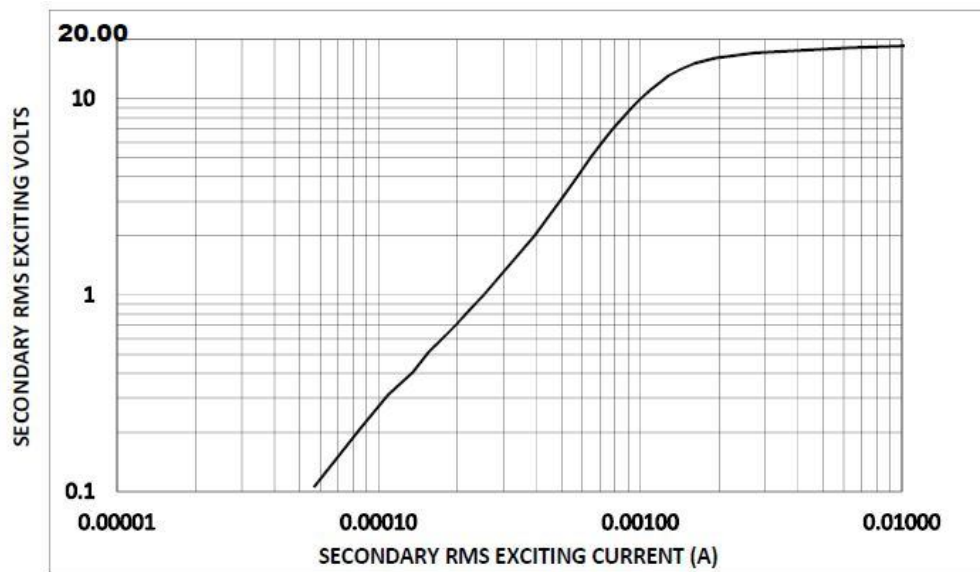


All dimensions are in mm  
 Linear dimensional tolerance ±0.2mm

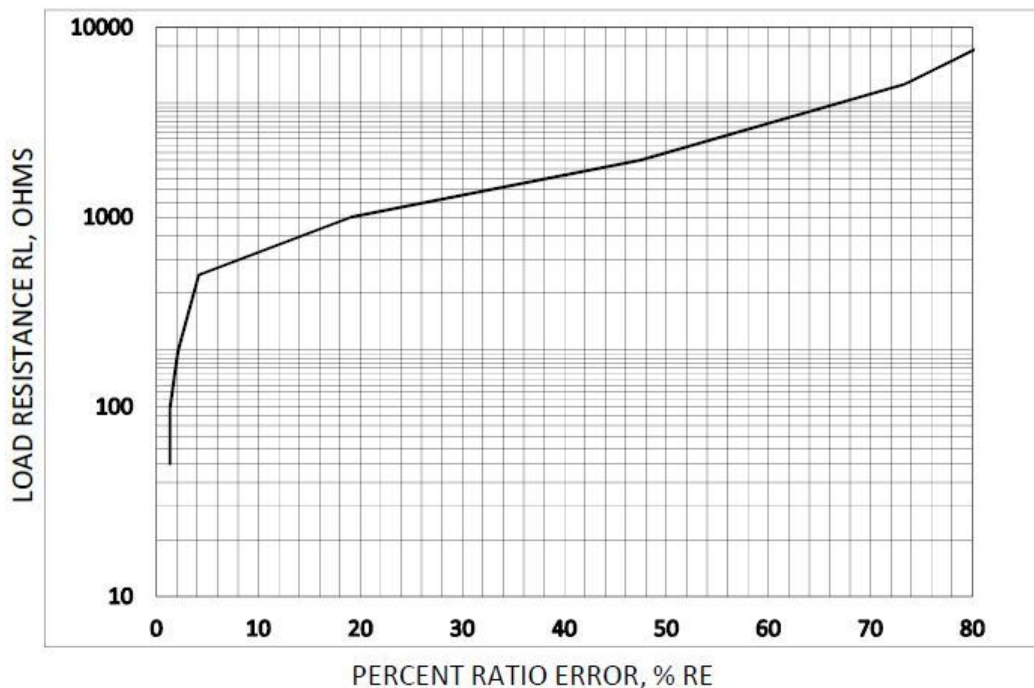


Note : Un-Used pin → #3

TYPICAL EXCITATION CURVE :



RATIO ERROR (%) vs RATED BURDEN @ INPUT CURRENT :



TRAF0 WEIGHT:

Approx. Weight = 0.0355 kg / pc

MARKING INFORMATION:

L01-6214  
 Ac yr / wk code  
 ●  
 Dot mark for Start pin identification

-----Initial Issue-----	1	0	Balaji. R	18-Nov'2015
Changes	Issue	Rev	Initial	Date