

IPC-603MB

2U 3-Slot Rackmount Chassis for ATX/MicroATX Motherboard with Front I/O



Features

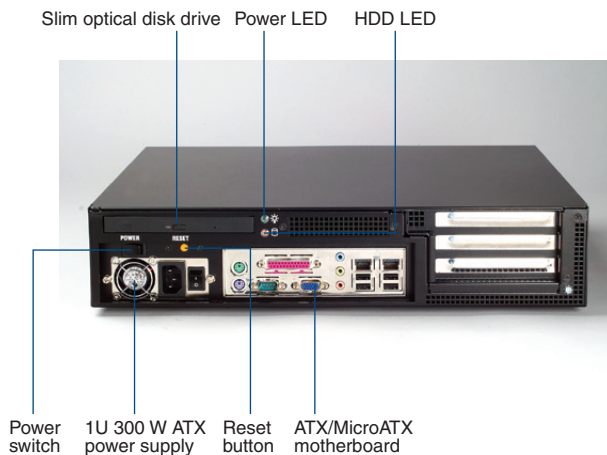
- The best embedded computing system for machinery applications
- Streamlined in-chassis airflow design supporting LGA775 Intel® Pentium® 4 processor up to 3.8 GHz with suggested CPU cooler
- All I/O interfaces are in the front
- Shock resistant disk drive bay designed to hold one slim CD-ROM and one internal 3.5" HDD
- Equipped with 1U 300 W ATX PFC power supply
- Easy-to-replace air filters



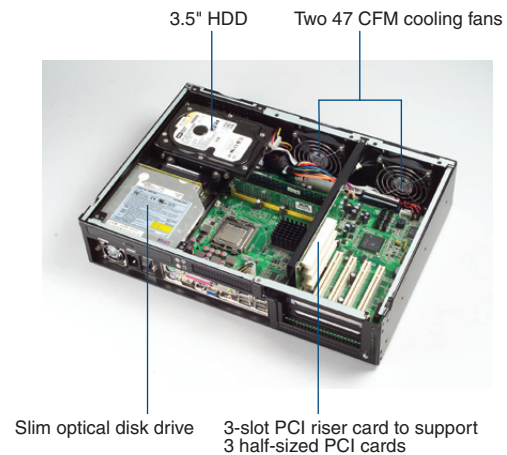
Specifications

Drive Bay	Slim Optical Disk Drive	Front-accessible	Internal
	3.5"	1	-
Cooling	Fan	2 (8 cm/47 CFM each)	-
	Air Filters	3 (85 x 80 mm)	1
Miscellaneous	Notification LEDs	Power & HDD activity	
Environment	Temperature	Operating	Non-Operating
		0 ~ 40° C (32 ~ 104° F)	-20 ~ 60° C (-4 ~ 140° F)
	Humidity	10 ~ 85% @ 40° C, non-condensing	10 ~ 95% @ 40° C, non-condensing
	Vibration (5 ~ 500 Hz)	1 Grms	2 G
	Shock	10 G (with 11 ms duration, half sine wave)	30 G
Physical Characteristics	Dimensions (W x H x D)	482 x 88 x 308 mm (19" x 3.46" x 12.1")	
	Weight	6.4 kg (14.1 lb)	

Front View

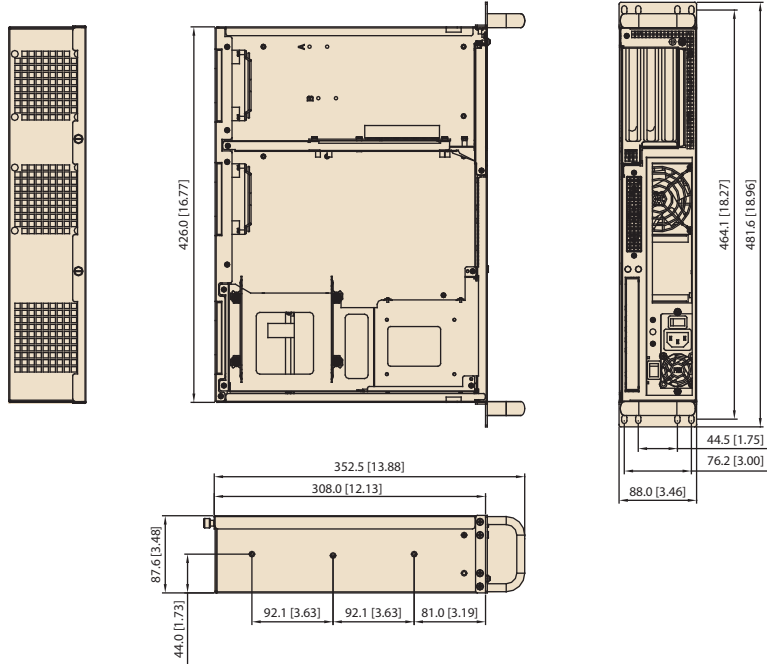


Inside View



Dimensions

Unit: mm [inch]



Ordering Information

Part Number	Power Supply
IPC-603MB0-30ZE	1757000160G (300W AC 100~240V full range)

Optional Accessories

Part Number	Description
1750000257	2U Socket 478 P4 CPU cooler up to 3.4 GHz (89 W)
1960022033T000	2U LGA775 P4 CPU cooler up to 3.4 GHz (84 W)
2130004795S000	Fan filter 80 x 85 x 5 mm
1700011772	SATA power wire 6-pin to big 4-pin (for slim ODD)