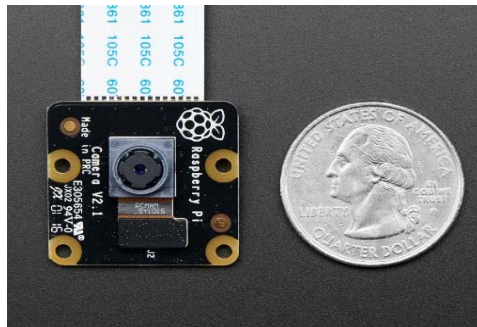
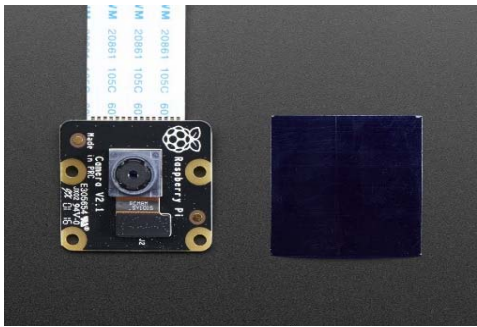
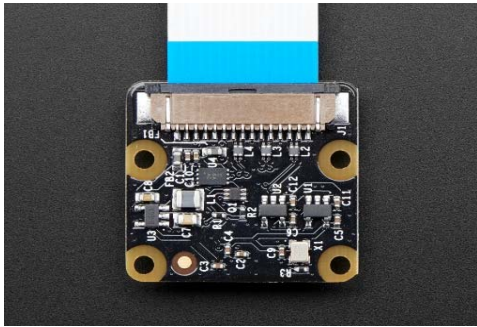




Raspberry Pi NoIR Camera Board v2 – 8 Megapixels

PRODUCT ID: 3100



Description

Snap, snap! The NoIR Camera v2 is the official "night vision" camera board released by the Raspberry Pi Foundation!

The **Raspberry Pi NoIR Camera Board v2** is a high quality 8 megapixel Sony IMX219 image sensor custom designed add-on board for Raspberry Pi, featuring a fixed focus lens. It's capable of 3280 x 2464 pixel static images, and also support 1080p30, 720p60, and 640x480p60/90 video.

It attaches to the Pi by way of one of the small sockets on the board's upper surface and uses the dedicated CSI interface, designed especially for interfacing to cameras.

The NoIR Camera has No InfraRed (NoIR) filter on the lens which makes it perfect for doing Infrared photography and taking pictures in low light (twilight) environments.

We also carry the original NoIR Camera Board which is 5 megapixels!

And we also have the new 8 megapixel version of the popular classic Raspberry Pi Camera Board!

The upgraded Raspberry Pi NoIR Camera board v2 features:

Improved Resolution

8 megapixel native resolution high quality Sony IMX219 image sensor

Cameras are capable of 3280 x 2464 pixel static images

Remaining High Quality

Capture video at 1080p30, 720p60 and 640x480p90 resolutions

All software is supported within the latest version of Raspbian Operating System

No Infrared filter making it perfect for taking Infrared photographs or photographing objects in low light (twilight) conditions

1.4 μm X 1.4 μm pixel with OmniBSI technology for high performance (high sensitivity, low crosstalk, low noise)

Optical size of 1/4"

Note: Raspberry Pi not included!

Technical Details

Dimensions: 25mm x 23mm x 9mm / 0.98" x 0.90" x 0.35"

Weight (camera board + attached cable): 3.4g