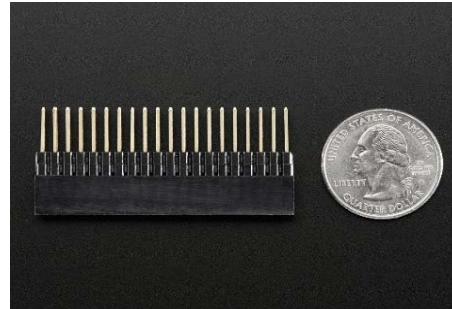




## Stacking Header for Pi A+ /B+ /Pi 2/Pi 3 – 2x20 Extra Tall Header

PRODUCT ID: 1979



### Description

Stack multiple plates, breakouts etc onto your Raspberry Pi Model B+ with this custom-made extra-tall and extra-long 2x20 female header. The female header part has extra spaces to make it 23mm tall: when placed on your Pi, a PCB will clear the Ethernet and USB jacks. The stacky pin part is also extra-long, 10mm, so that when a standard 1.5mm thickness PCB is installed, there will be 8.5mm remaining, plenty to plug into.

You'll get one header per order.

### Technical Details

Dimensions: 5mm x 51mm x 23mm / 0.2" x 2" x 0.9"

Pin Length: 10mm

Pin Spacing: 2.5mm / 0.1"

Pin Thickness: 0.6mm / 0.02"

Weight: 6.5g



Engineered in NYC Adafruit®