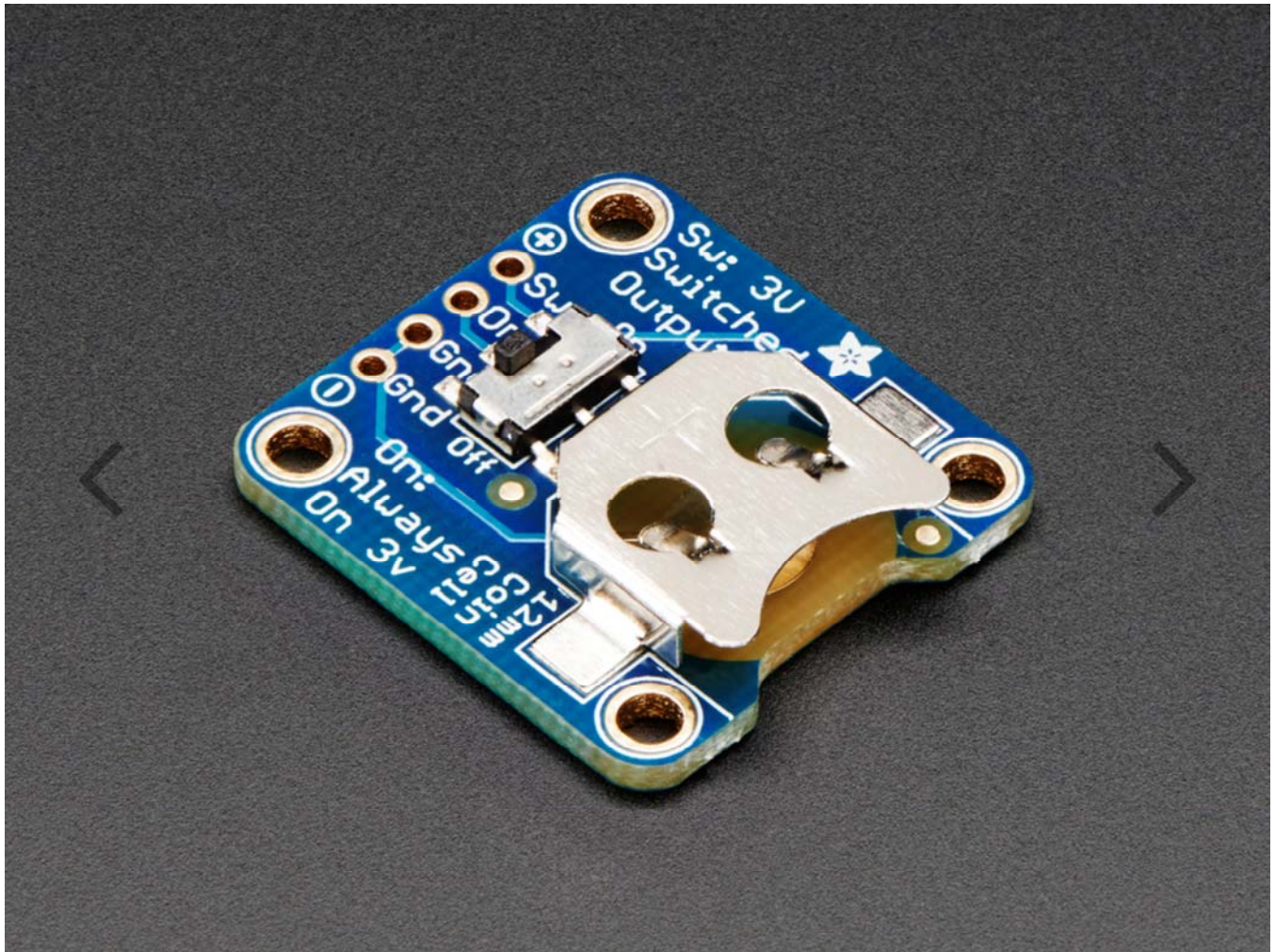


# 12mm Coin Cell Breakout w/ On-Off Switch

PRODUCT ID: 1867



---

## DESCRIPTION

---

Simple but effective – this breakout board has a CR1220 coin cell battery holder soldered on, an on/off switch and 0.1" pitch breakout pins for easy connecting. Great for powering very low-current projects, or adding a battery backup circuit to a real-time-clock or similar. There's two ground pins, one 'switched' power pin, and one pin that is always on.

Comes with one fully assembled and tested breakout plus a small stick of 0.1" header so you can solder it on and plug into a breadboard.

---

# Technical Details

## Dimensions:

25mm x 23mm x 1.5mm / 1" x 0.9" x 0.06"

Mounting hole distance: 18mm x 16mm / 0.7" x 0.6"

Weight: 2g