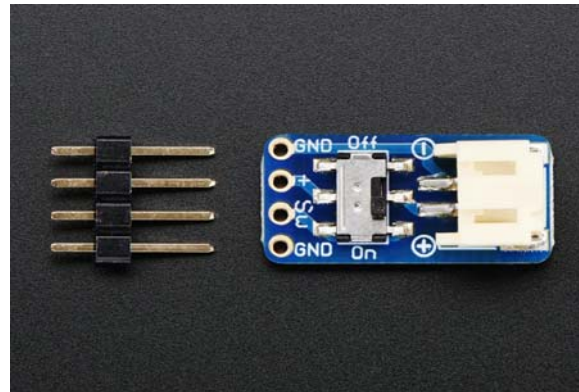
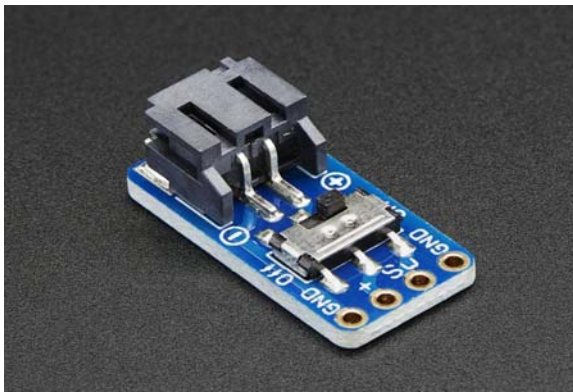




Switched JST-PH 2-Pin SMT Right Angle Breakout Board

PRODUCT ID: 1863



Description

This switched JST connector is the best way to quickly prototype with our LiPoly batteries. We paired a genuine JST connector with a slide switch that can do up to 600mA. Both are soldered onto a breadboard-friendly breakout. There's two ground pins, one 'switched' power pin, and one pin that is always on. This is compatible with the "JST PH 2-pin" connectors we use in our battery packs.. Mates perfectly with all our 1-cell [LiPoly](#) and [Lilon batteries](#) as well as our [6V coin cell holder](#) and [3xAAA battery pack](#). [We also have simple JST pigtails that mate with this connector.](#)

Technical Details

Dimensions:

21mm x 10mm x 2mm / 0.8" x 0.4" x 0.08"

Height with JST: 7.3mm

Weight: 1g



Engineered in NYC Adafruit®