

D Sub

Socket Connector, Discrete Wire Termination

DDM Series



- IDC contact with integral wire strain relief
- #20-30 AWG discrete wire capability
- Tin plated steel shells for electrical grounding and shielding capability

TS-1058-01
Sheet 1 of 3

Date Modified: January 21, 2002

9

Physical

Insulation

Material: Thermoplastic, Glass Filled Polyester
Flammability: UL 94V-0
Color: Black

Contact

Material: Phosphor Bronze

Plating

Underplate: 50 μ " (1.27 μ m) Nickel — QQ-N-290, Class 2
Wiping Area: See ordering information, Gold — MIL-G-45204, Type II, Grade C

Shell

Material: Steel
Plating: Tin

Wire Accommodation: See ordering information

Marking: Contact Position Numbers

Electrical

Current Rating:	20 AWG–7.0 Amps / 22 AWG–5.3 Amps	Cable Rating: 115°C minimum
	24 AWG–4.0 Amps / 26 AWG–2.9 Amps	Cable Rating: 80°C minimum
	28 AWG–2.0 Amps / 30 AWG–1.0 Amps	Cable Rating: 80°C minimum

Insulation Resistance: $> 1 \times 10^9 \Omega$ at 500 VDC

Withstanding Voltage: 1000 Vrms at Sea Level

Environmental

Temperature Rating: –65° to +105°

UL File No.: E68080

3M Interconnect Solutions Division

6801 River Place Blvd.
Austin, TX 78726-9000

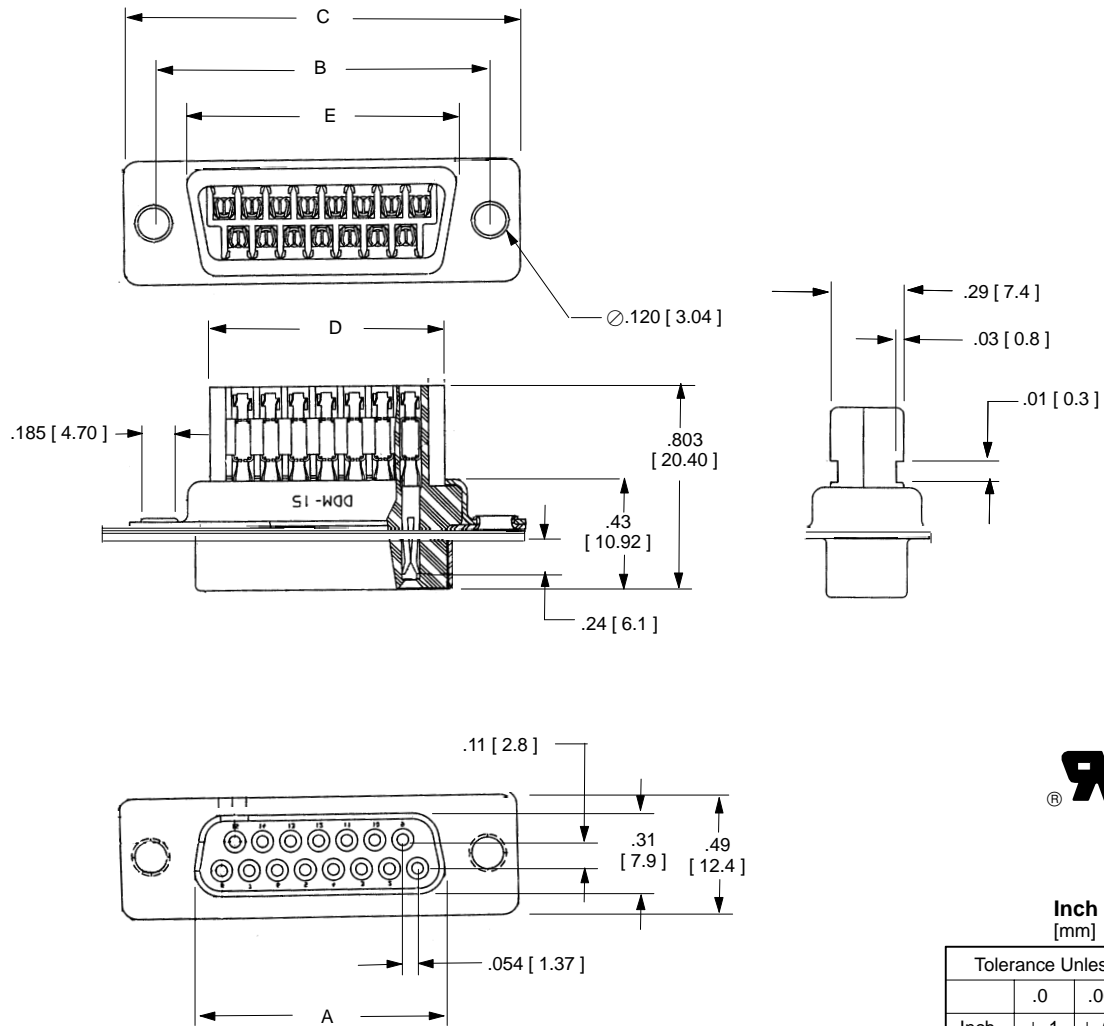
For technical, sales or ordering information call
800-225-5373

D Sub

Socket Connector, Discrete Wire Termination

DDM Series

Contact Quantity	Dimensions				
	A	B	C	D	E
09	.64 [16.3]	.98 [24.9]	1.21 [30.7]	.57 [14.5]	.76 [19.3]
15	.97 [24.6]	1.31 [33.3]	1.54 [39.1]	.89 [22.6]	1.08 [27.4]
25	1.51 [38.4]	1.85 [47.0]	2.09 [53.1]	1.44 [36.6]	1.63 [41.4]
37	2.16 [54.9]	2.50 [63.5]	2.73 [69.3]	2.10 [53.3]	2.27 [57.7]

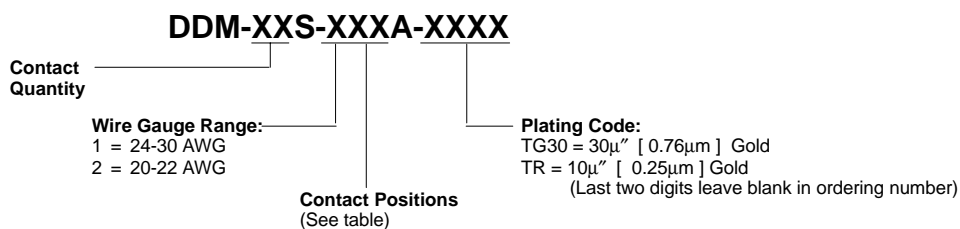


Inch
[mm]

Tolerance Unless Noted			
	.0	.00	.000
Inch	± .1	± .01	± .005

[] Dimensions for
Reference only

Ordering Information



TS-1058-01
Sheet 2 of 3

3M Interconnect Solutions Division

6801 River Place Blvd.
Austin, TX 78726-9000

For technical, sales or ordering information call
800-225-5373

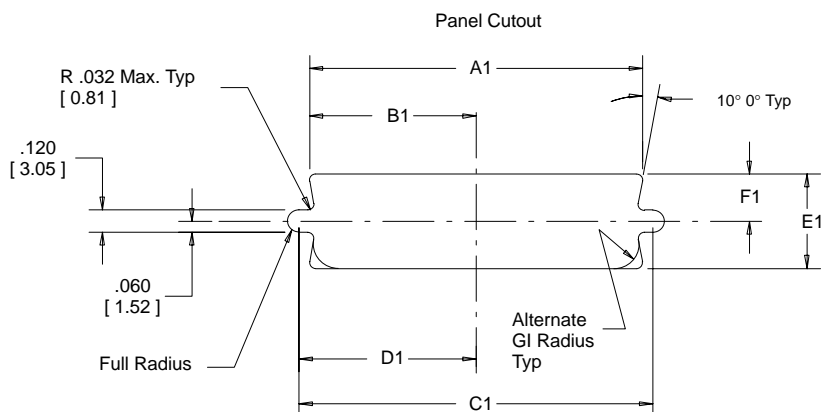
D Sub

Socket Connector, Discrete Wire Termination

DDM Series

Mounting Method*	Contact Quantity	Dimensions						
		A1	B1	C1	D1	E1	F1	G1
Front	9	.87 [22.0]	.44 [11.2]	.98 [24.9]	.49 [12.5]	.51 [13.0]	.26 [6.6]	.12 [3.1]
	15	1.20 [30.5]	.60 [15.2]	1.31 [33.3]	.66 [16.8]			
	25	1.74 [44.2]	.87 [22.1]	1.85 [47.0]	.93 [23.6]			
	37	2.39 [60.7]	1.20 [30.5]	2.50 [63.5]	1.25 [31.8]			
Rear	9	0.81 [20.6]	.40 [10.2]	.98 [25.0]	.49 [12.5]	0.45 [11.4]	0.22 [5.8]	.12 [3.1]
	15	1.13 [28.7]	.57 [14.5]	1.31 [33.3]	.66 [16.8]			
	25	1.67 [42.4]	.84 [21.3]	1.85 [47.0]	.93 [23.6]			
	37	2.33 [59.2]	1.16 [29.5]	2.50 [63.5]	1.25 [31.8]			

* Front Mount—The connector is mounted in front of the panel.
Rear Mount—The connector is mounted behind the panel.



Tooling required to assemble the DDM socket and Plug connector		
Bench Termination Method	Manual Arbor Press	CT-20
	Tooling Nest	DDM-MTT-1
	Platten	DDM-MTT-1P
Hand Termination Method	Ratcheting hand tool	DDM-HTT-R1

TS-1058-01
Sheet 3 of 3

3M Interconnect Solutions Division

6801 River Place Blvd.
Austin, TX 78726-9000

For technical, sales or ordering information call
800-225-5373