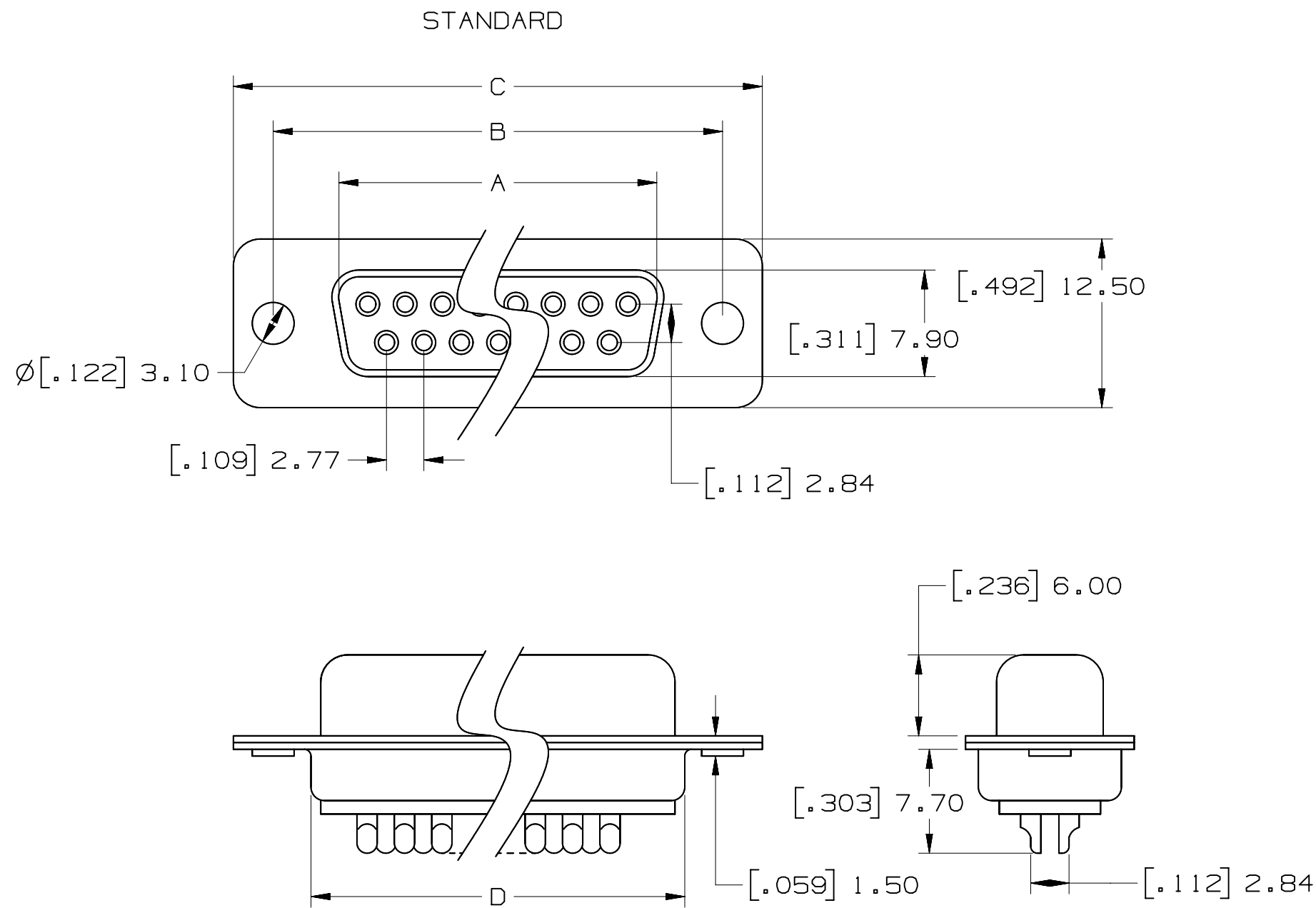


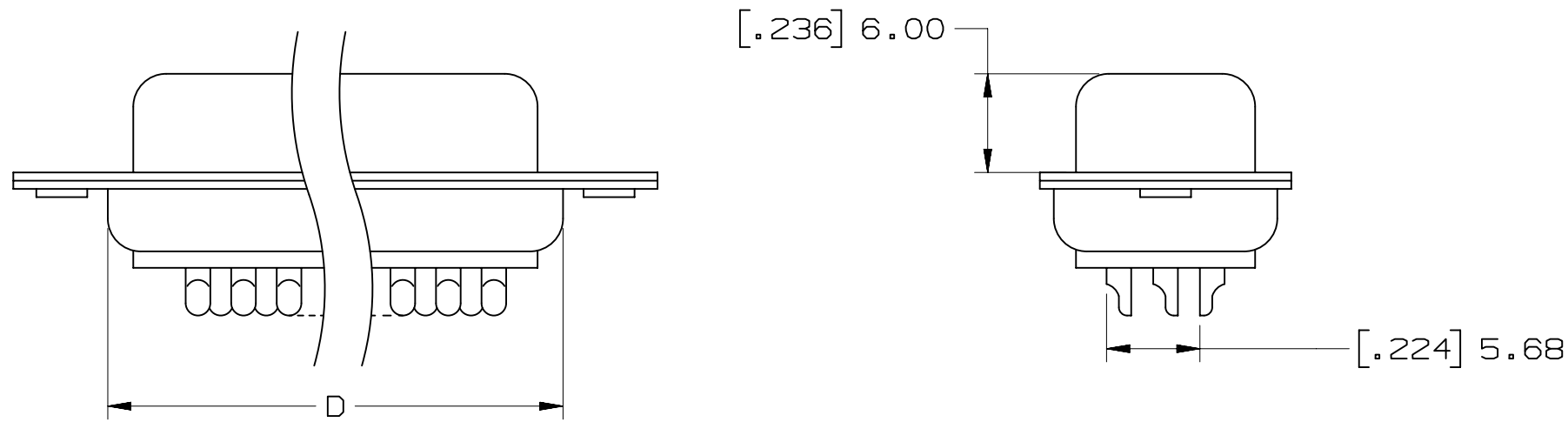
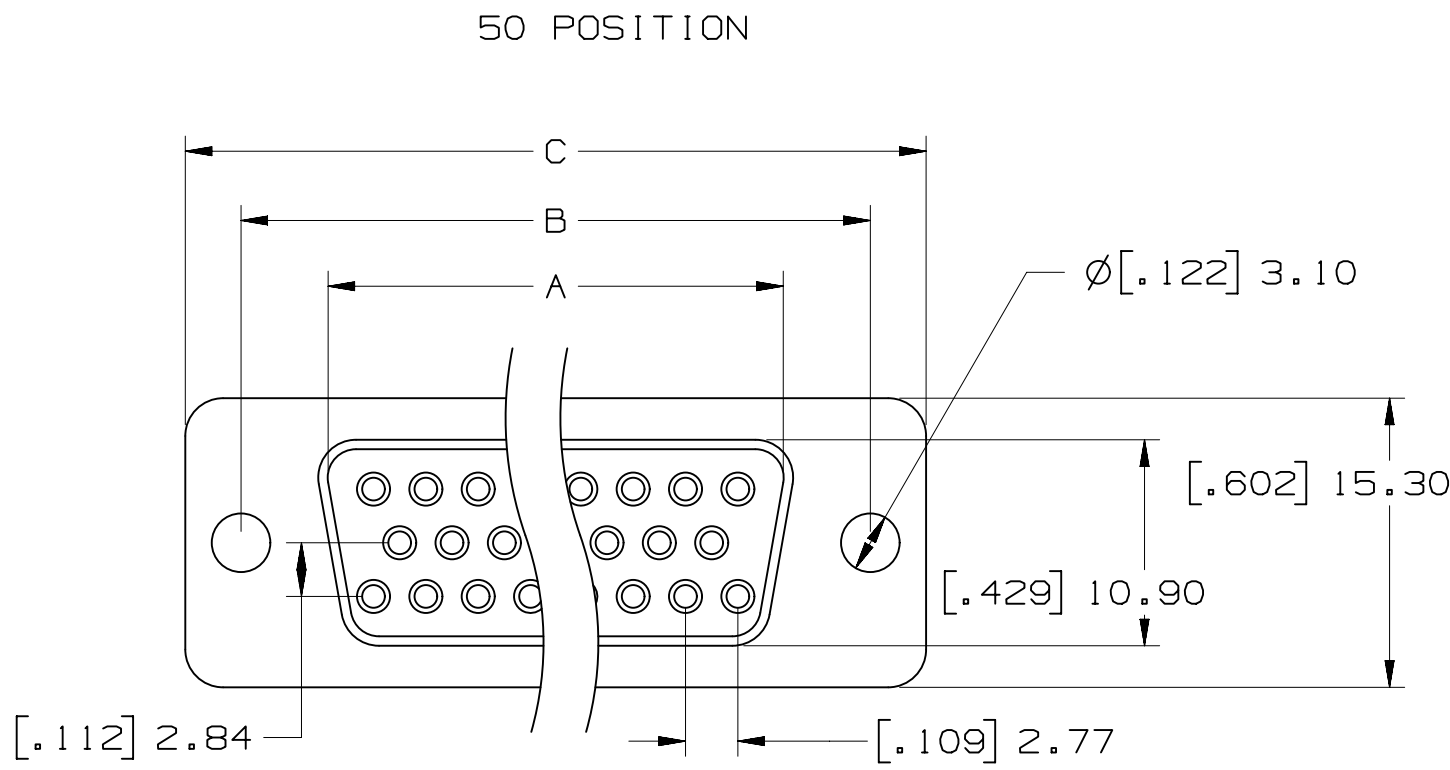
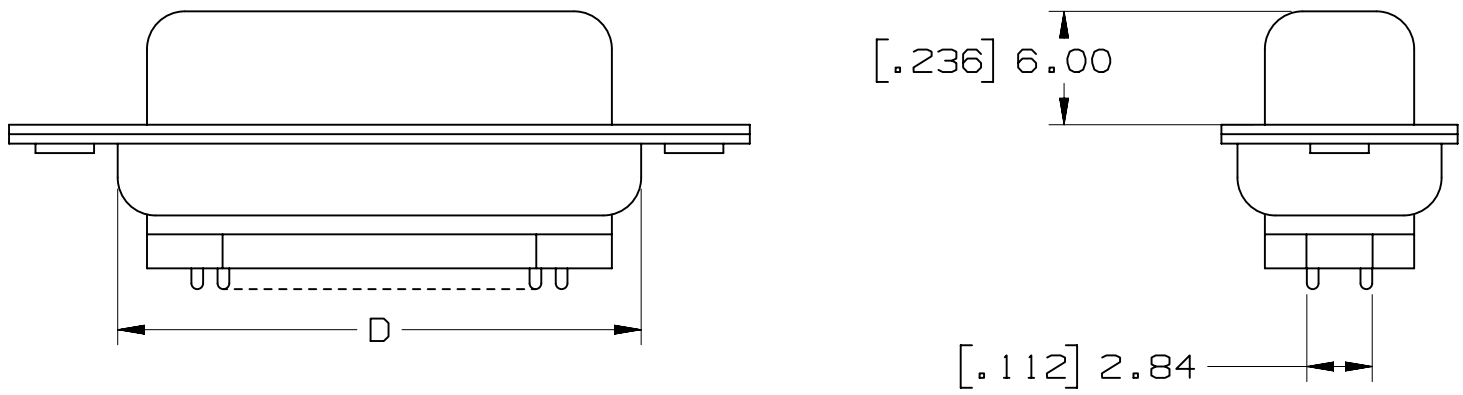
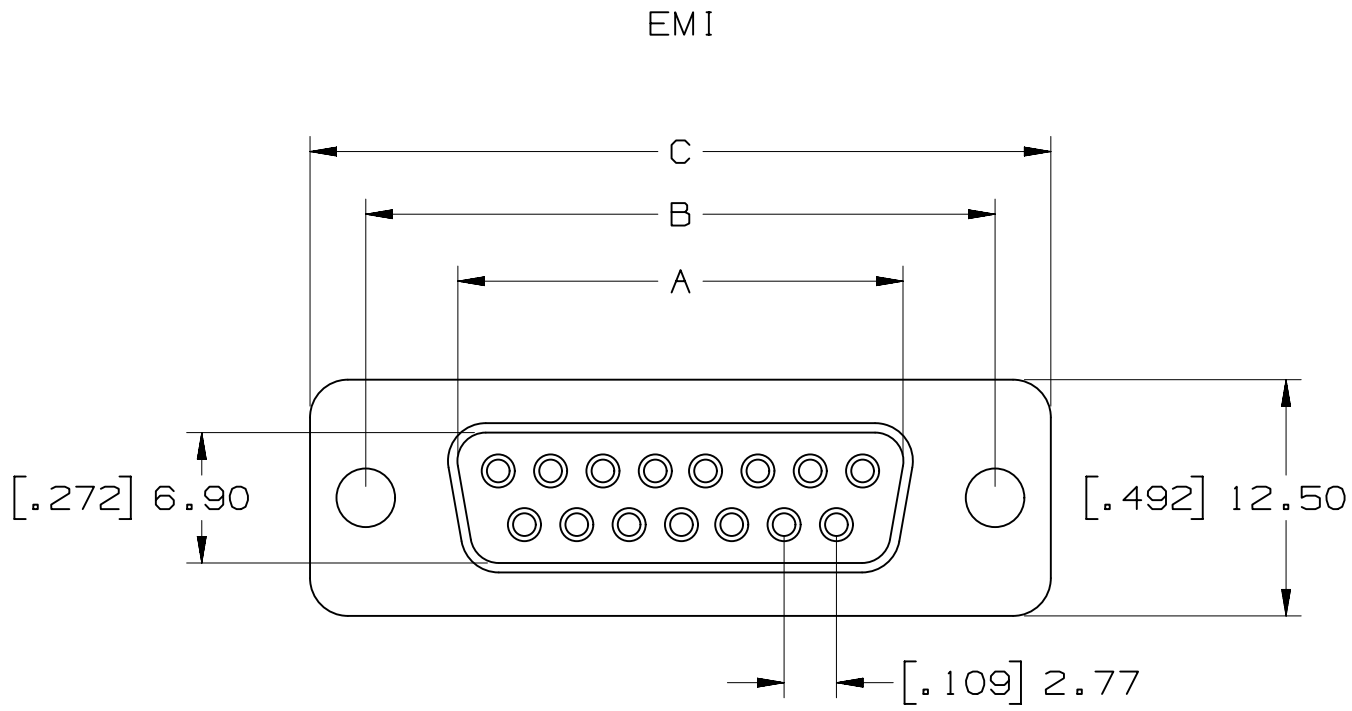
3M™ Solder Cup D Sub Socket, 8000 Series



POSITION	A	B	C	D
9	[.642] 16.30	[.984] 25.00	[1.213] 30.80	[.756] 19.20
15	[.969] 24.60	[1.311] 33.30	[1.543] 39.20	[1.091] 27.70
25	[1.508] 38.30	[2.248] 57.10	[2.091] 53.10	[1.618] 41.10
37	[2.157] 54.80	[2.500] 63.50	[2.732] 69.40	[2.256] 57.30
50*	[2.055] 52.20	[2.402] 61.00	[2.638] 67.00	[2.169] 55.10

*50 POSITION AVAILABLE IN STANDARD ONLY

PERFORMANCE	
OPERATION VOLTAGE:	250V MAX.
CURRENT:	3A MAX.
INSULATION RESISTANCE:	3000 MOhm MIN @ 500VDC
WITHSTANDING VOLTAGE:	1000 VAC / MIN.
TEMPERATURE RATING:	-55°C to 105°C
CONTACT RESISTANCE:	15 mOhms MAX.



8RXX-X00X

NUMBER OF CONTACTS (SEE TABLE)

PLATING
1 - AU FLASH
2 - 30μ" AU

EMI
N - STANDARD
E - EMI

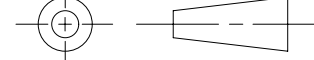
Unless otherwise noted, references to industry specifications are intended to indicate substantial compliance to the material elements of the specification. Such references should not be construed as a guarantee of compliance to all requirements in a given specification.

3M ELECTRONIC SOLUTIONS DIVISION
INTERCONNET SOLUTIONS
<http://www.3mconnectors.com>

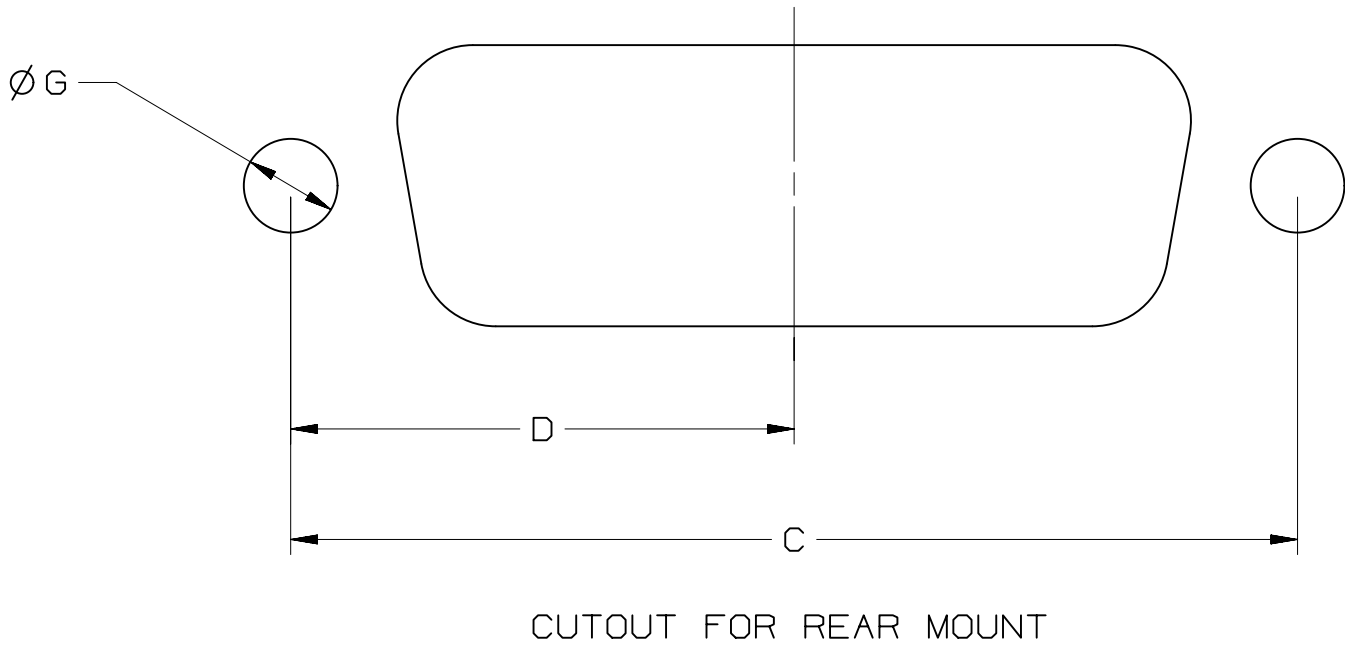
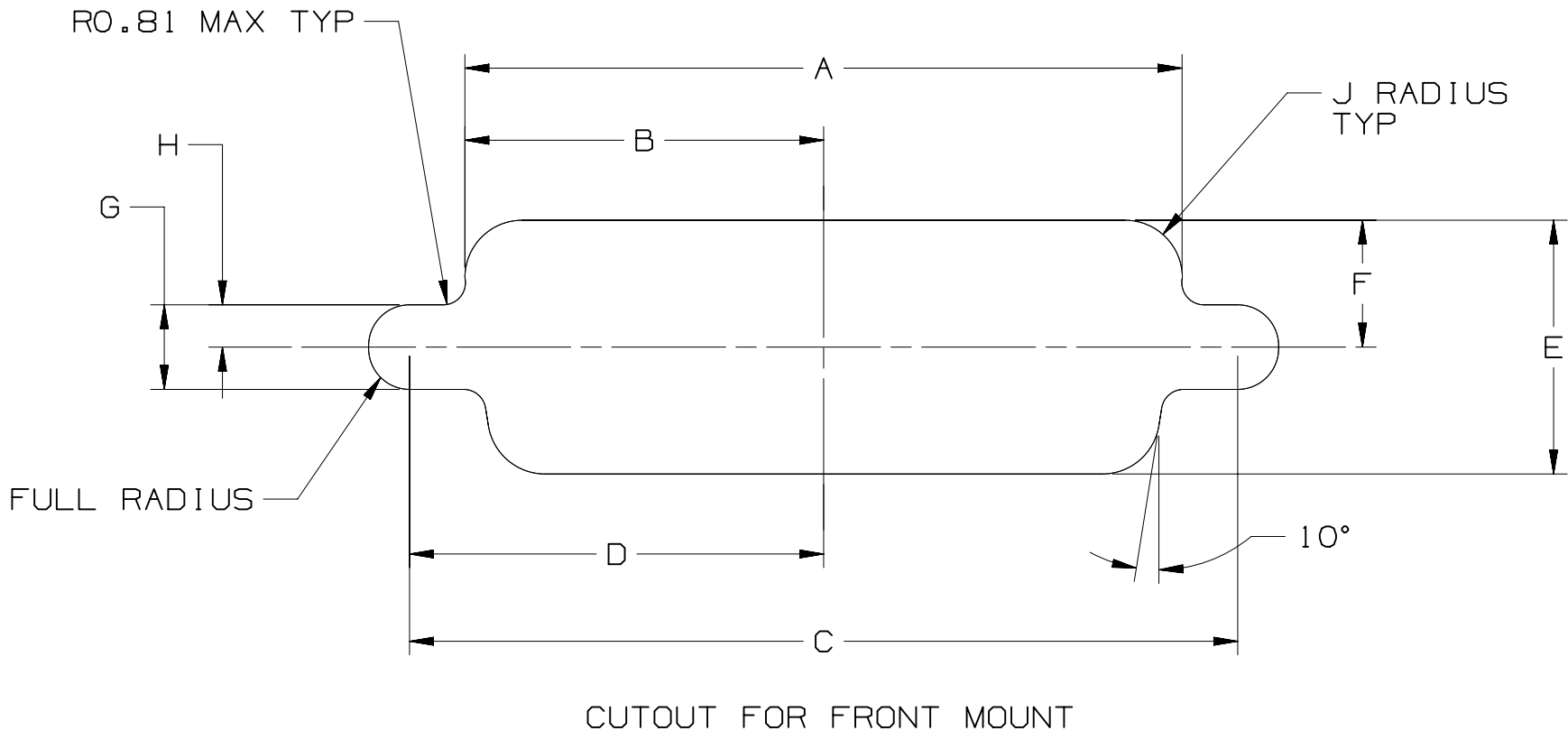
3M IS A TRADEMARK OF 3M COMPANY.
FOR TECHNICAL, SALES OR ORDERING
INFORMATION, CALL 800-225-5373

NOTES

- 1 MATERIAL:
THERMAL PLASTIC UL94V-0
CONTACTS:
COPPER ALLOY
SHELL:
G3141 SPCC OR EQUIVALENT
- 2 PLATING:
50μ" NICKEL UNDERPLATE
1μ" AU WIPING AREA OR
30μ" AU WIPING AREA
100-200μ" TIN (BRIGHT TIN) SOLDER TAIL
- 3 MATES WITH:
BPXX-X00X
- 4 SEE THE REGULATORY INFORMATION
APPENDIX (RIA) IN "RoHS"
COMPLIANCE SECTION OF
WWW.3MCONNECTOR.COM FOR
COMPLIANCE INFORMATION
(RIA E1 & C1 APPLY)

DESIGN REFERENCE		NEXT ASSEMBLY		REV	ECO	ISSUE DATE AND DESCRIPTION		DRFT	CHKD	
ACCESS CODES				DRFT SJS		DATE MAY 18, 2011	MFG	DATE		
				DRFT ARM		DATE MAY 18, 2011	APPL	DATE		
DIVISION		DIVISION CODE		3M 3M Center St. Paul, MN 55144		© 3M COPYRIGHT 2013 This document and the information it contains are 3M property and may not be reproduced or further distributed without the 3M permission, or used or disclosed other than for 3M authorized purposes. All rights reserved.				
DO NOT SCALE DRAWING		SCALE 1 1								TOLERANCES EXCEPT AS NOTED
		INCHES 0 ±.01 .00 ±.002 2000 ±		TITLE 8RXX-X00X D-SUB SOLDER CUP SOCKET TS-2402						
THIRD ANGLE PROJECTION		MILLIMETERS 0 ±.1 .0 ±.05 .00 ±.005		CAGE NUMBER		SIZE		DRAWING NO.		REV.
INTERPRET PER ASME Y14.5 - 1994				D		78-5100-2402-5		C		
MAX SURFACE ROUGHNESS 125/ <input type="checkbox"/> ALL SURFACES <input checked="" type="checkbox"/> MARKED ONLY		ANGLES ±1°		MODEL BR		DET. LISTS		<input type="checkbox"/> YES <input checked="" type="checkbox"/> NO		SHT 1 OF 2

POSITION	MOUNTING METHOD	A	B	C	D	E	F	G	H	J
9	FRONT	.874[22.2]	.437[11.1]	.984[25.0]	.492[12.5]	.513[13.0]	.257[6.5]	.120[3.1]	.060[1.5]	.083[2.1]
	REAR	.806[20.5]	.403[10.2]	.984[25.0]	.492[12.5]	.449[11.4]	.225[5.7]	.120[3.1]	.060[1.5]	.132[3.4]
15	FRONT	1.202[30.5]	.601[15.3]	1.312[33.3]	.656[16.7]	.513[13.0]	.257[6.5]	.120[3.1]	.060[1.5]	.083[2.1]
	REAR	1.134[28.8]	.567[14.4]	1.312[33.3]	.656[16.7]	.449[11.4]	.225[5.7]	.120[3.1]	.060[1.5]	.132[3.4]
25	FRONT	1.743[44.3]	.872[22.2]	1.852[47.0]	.926[23.5]	.513[13.0]	.257[6.5]	.120[3.1]	.060[1.5]	.083[2.1]
	REAR	1.674[42.5]	.837[21.3]	1.852[47.0]	.926[23.5]	.449[11.4]	.225[5.7]	.120[3.1]	.060[1.5]	.132[3.4]
37	FRONT	2.391[60.7]	1.196[30.4]	2.500[63.5]	1.250[31.8]	.513[13.0]	.257[6.5]	.120[3.1]	.060[1.5]	.083[2.1]
	REAR	2.326[59.1]	1.163[29.5]	2.500[63.5]	1.250[31.8]	.449[11.4]	.225[5.7]	.120[3.1]	.060[1.5]	.132[3.4]
50	FRONT	2.297[58.3]	1.149[29.2]	2.406[61.1]	1.203[30.6]	.623[15.8]	.312[7.9]	.120[3.1]	.060[1.5]	.083[2.1]
	REAR	2.218[56.3]	1.109[28.2]	2.406[61.1]	1.203[30.6]	.555[14.1]	.278[7.1]	.120[3.1]	.060[1.5]	.132[3.4]



		C		46292	MAR 28, 2013		SJS		ARM	
		B		34516	CORRECT SHELL MATL AUG 29, 2011		SJS		ARM	
		A		34511	CHANGE MOHMS TO MOHMS, UPDATE ROHS MAY 18, 2011		SJS		ARM	
		REV		ECO	ISSUE DATE AND DESCRIPTION				DRFT	CHKD
XREF CODES		SJS		DATE MAY 18, 2011				MFG	DATE	
		CHKD ARM		DATE MAY 18, 2011				APPRVL	DATE	
DIVISION		DIVISION CODE		© 3M COPYR[IGHT] 2013						
DO NOT SCALE DRAWING		SCALE 1 1		3M Center St. Paul, MN 55144		This document and the information it contains are 3M property and may not be reproduced or further distributed without 3M permission, or used or disclosed other than for 3M authorized purposes. All rights reserved.				
		THIRD ANGLE PROJECTION		TOLERANCES EXCEPT AS NOTED		TITLE				
INTERPRET PER ASME Y14.5 - 1994		INCHES 0 ±.00 ±.002 ±.0000		8RXX-X00X D-SUB SOLDER CUP SOCKET TS-2402						
MAX SURFACE ROUGHNESS 125 √ <input type="checkbox"/> ALL SURFACES <input checked="" type="checkbox"/> MARKED ONLY		MILLIMETERS 0 ±.1 ±.00 ±.05 ±.0005		CAGE NUMBER		SIZE		DRAWING NO.		
		ANGLES ±1°		D		78-5100-2402-5		REV. C		
				MODEL BR		DET LISTS		YES <input type="checkbox"/> NO <input checked="" type="checkbox"/> SHT 2 OF 2		