

Shuttle Encoders with Center Space

Japan

Type: **EVQWMJ**



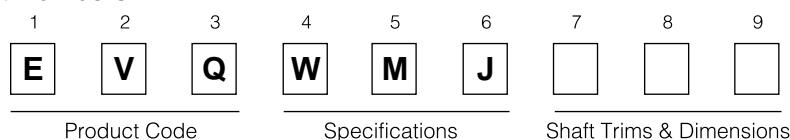
■ Features

- A through-hole and a mounting part for operation buttons in the center allow composition of a unit with mounted switches, LED's, etc., on a PWB on the user side.
- Package size of □40mm, absolute output of 4-bit and 16-position
- Excellent rotation feeling and small shaft wobble by use of a center pillar mechanism

■ Recommended Applications

- Editing device for VTR's or LD, CD Players (image control for main units or remote control transmitters)
- Menu selection for PC Monitors
- Remote control transmitter for Car Navigation Equipment

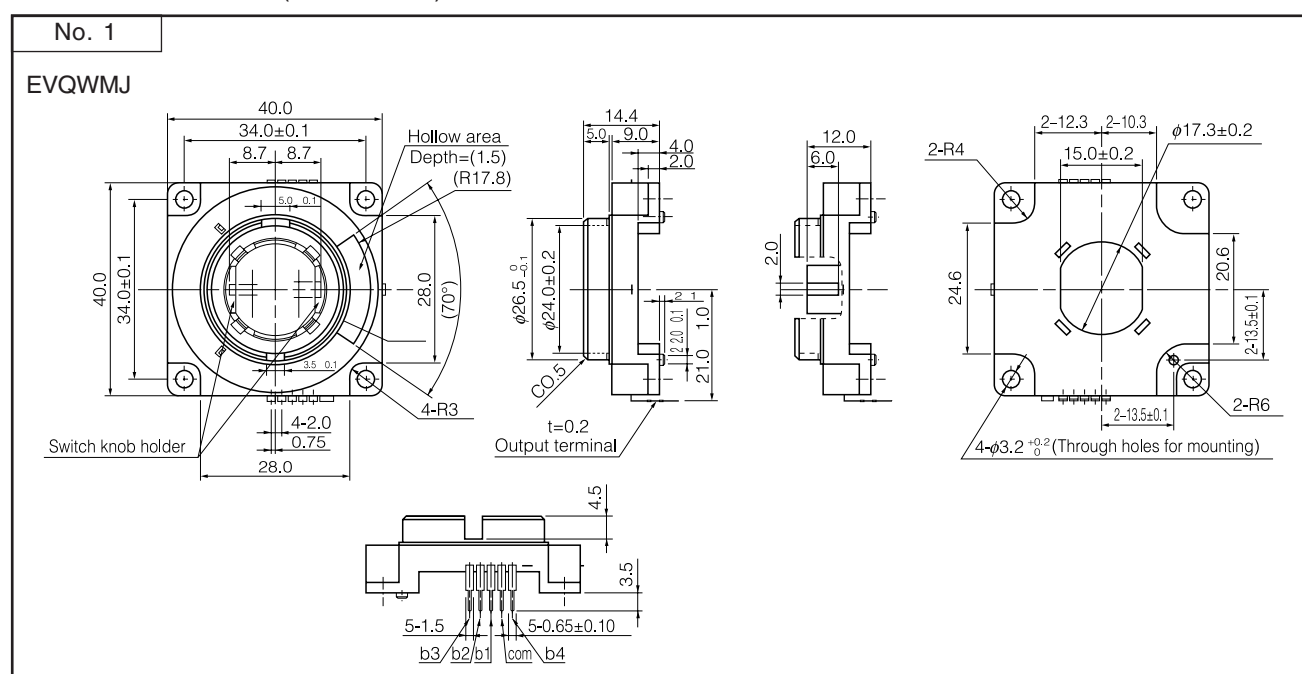
■ Explanation of Part Numbers



■ Major Specifications

Type	Shuttle ring reverting to center position
Rotation Angle	140 °
Bit	4-bit absolute
Positions	16 positions
Insulation Resistance	10 MΩ min. (at 50 Vdc)
Contact Resistance	1 kΩ max.
Rating	0.07 A 5 Vdc
Rotation Life	50000 cycles min.
Minimum Quantity/Packing Unit	40 pcs.(Trey Pack)
Quantity/Carton	200 pcs.

■ Dimensions in mm (not to scale)



Design, Specifications are subject to change without notice. Ask factory for technical specifications before purchase and/or use.
Whenever a doubt about safety arises from this product, please inform us immediately for technical consultation without fail.